

Appendix F

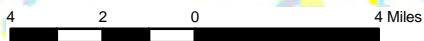
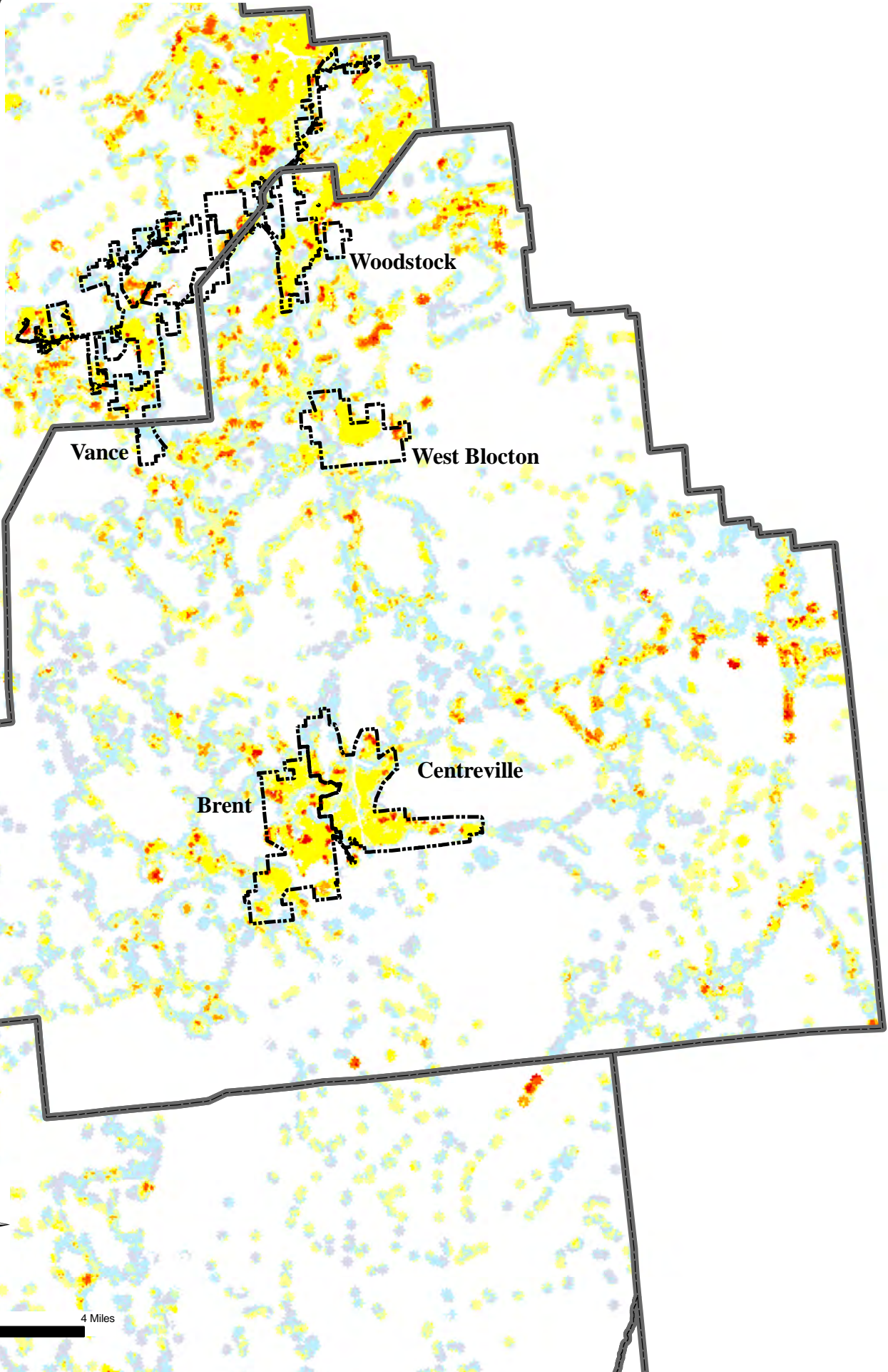
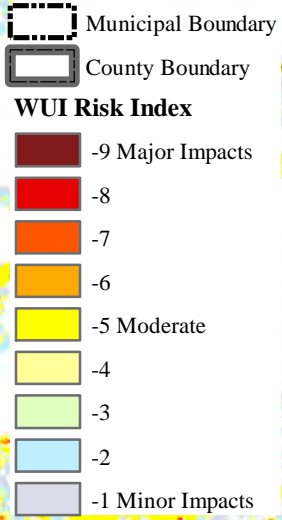
Wildland Urban Interface Risk Index by Jurisdiction

Wildfire Intensity by Jurisdiction


Wildfire Burn Probability by Jurisdiction


Wildland Urban Interface Risk Index by Jurisdiction

Bibb County WUI Risk Index



Dallas County WUI Risk Index

 Municipal Boundary

 County Boundary


WUI Risk Index

 -9 Major Impacts

 -8

 -7

 -6

 -5 Moderate

 -4

 -3

 -2

 -1 Minor Impacts

Valley Grande

Selma

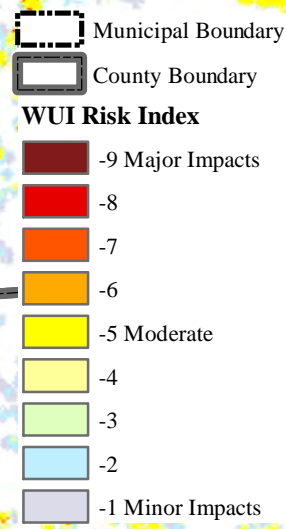
Orrville



5.5 2.75 0 5.5 Miles



Greene County WUI Risk Index



Union


Eutaw


Boligee

Forkland



Hale County WUI Risk Index

 Municipal Boundary

 County Boundary


WUI Risk Index

 -9 Major Impacts

 -8

 -7

 -6

 -5 Moderate

 -4

 -3

 -2

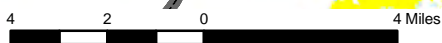
 -1 Minor Impacts

Moundville

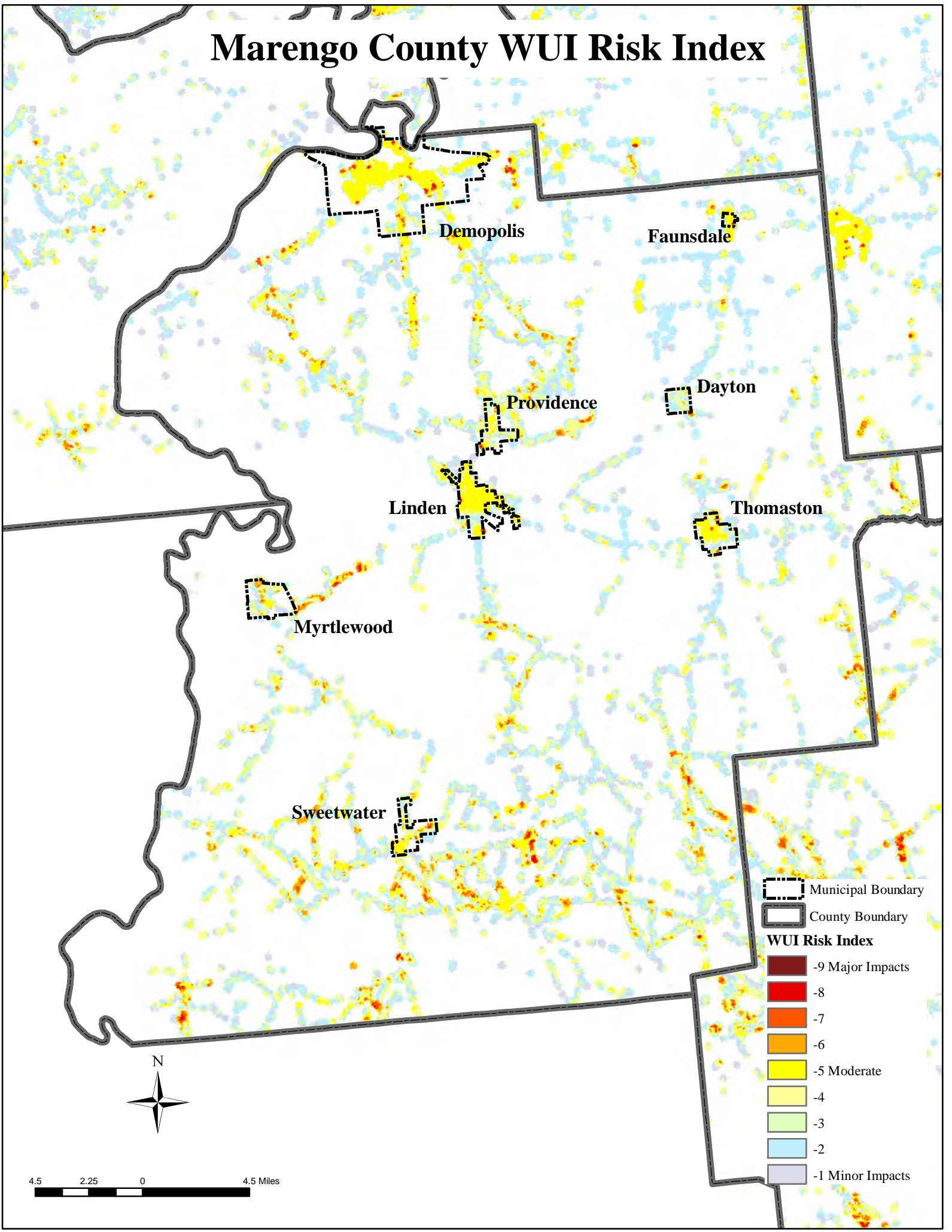
Akron

Greensboro

Newbern




Marengo County WUI Risk Index






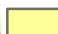
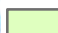
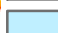



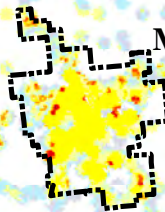
Perry County WUI Risk Index

 Municipal Boundary

 County Boundary

WUI Risk Index

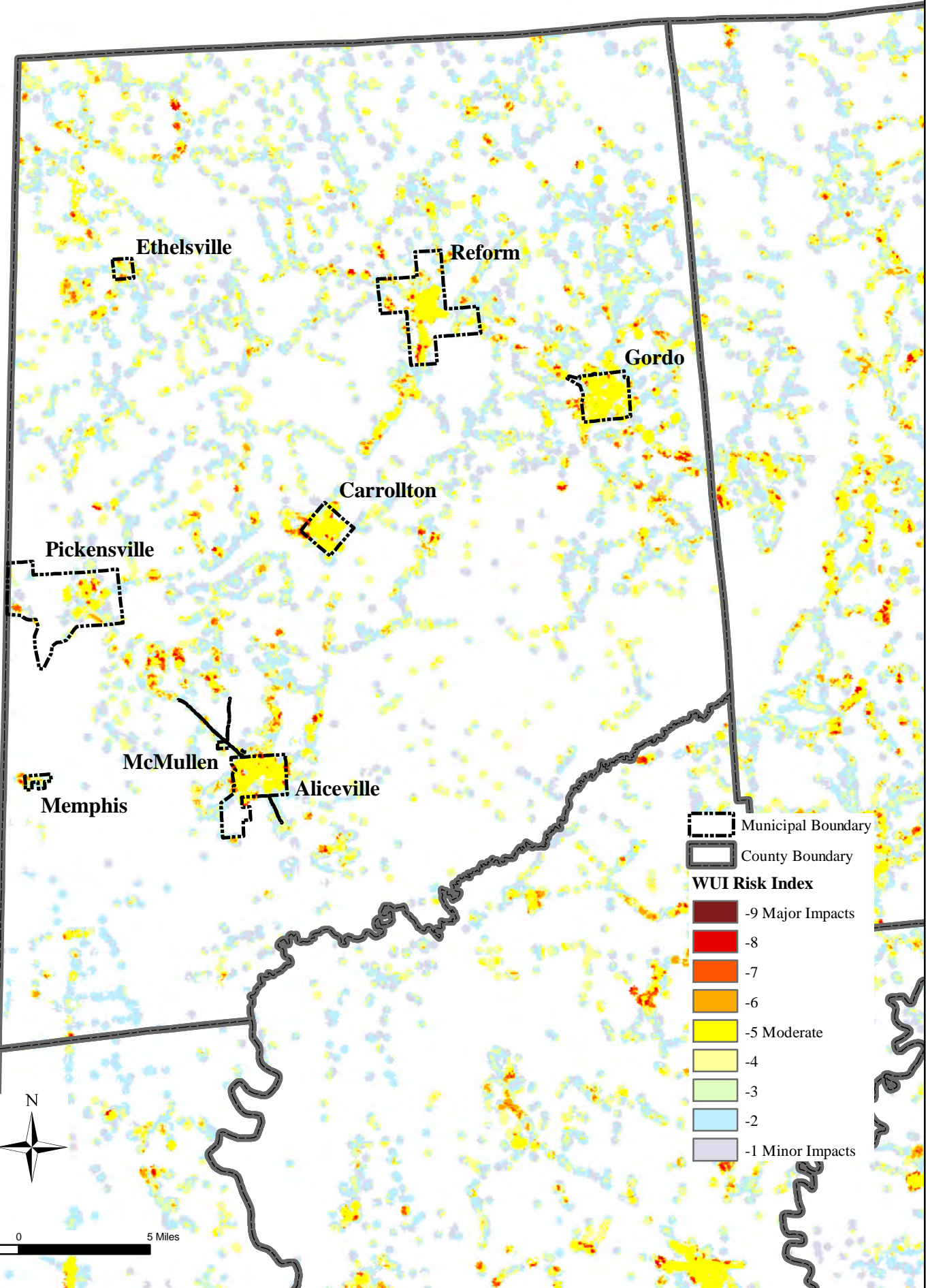
-  -9 Major Impacts
-  -8
-  -7
-  -6
-  -5 Moderate
-  -4
-  -3
-  -2
-  -1 Minor Impacts

 Marion

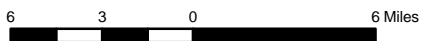
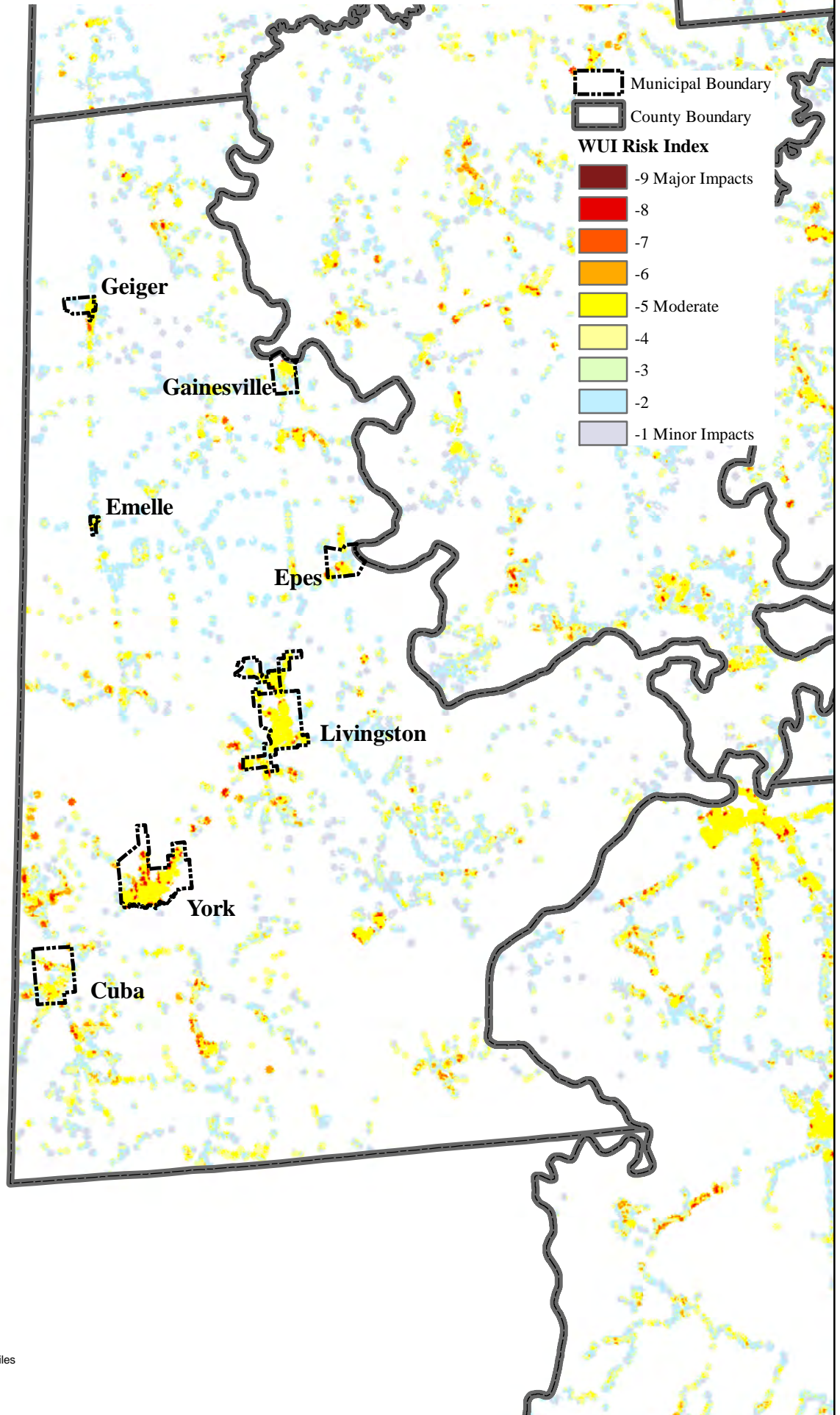
Uniontown



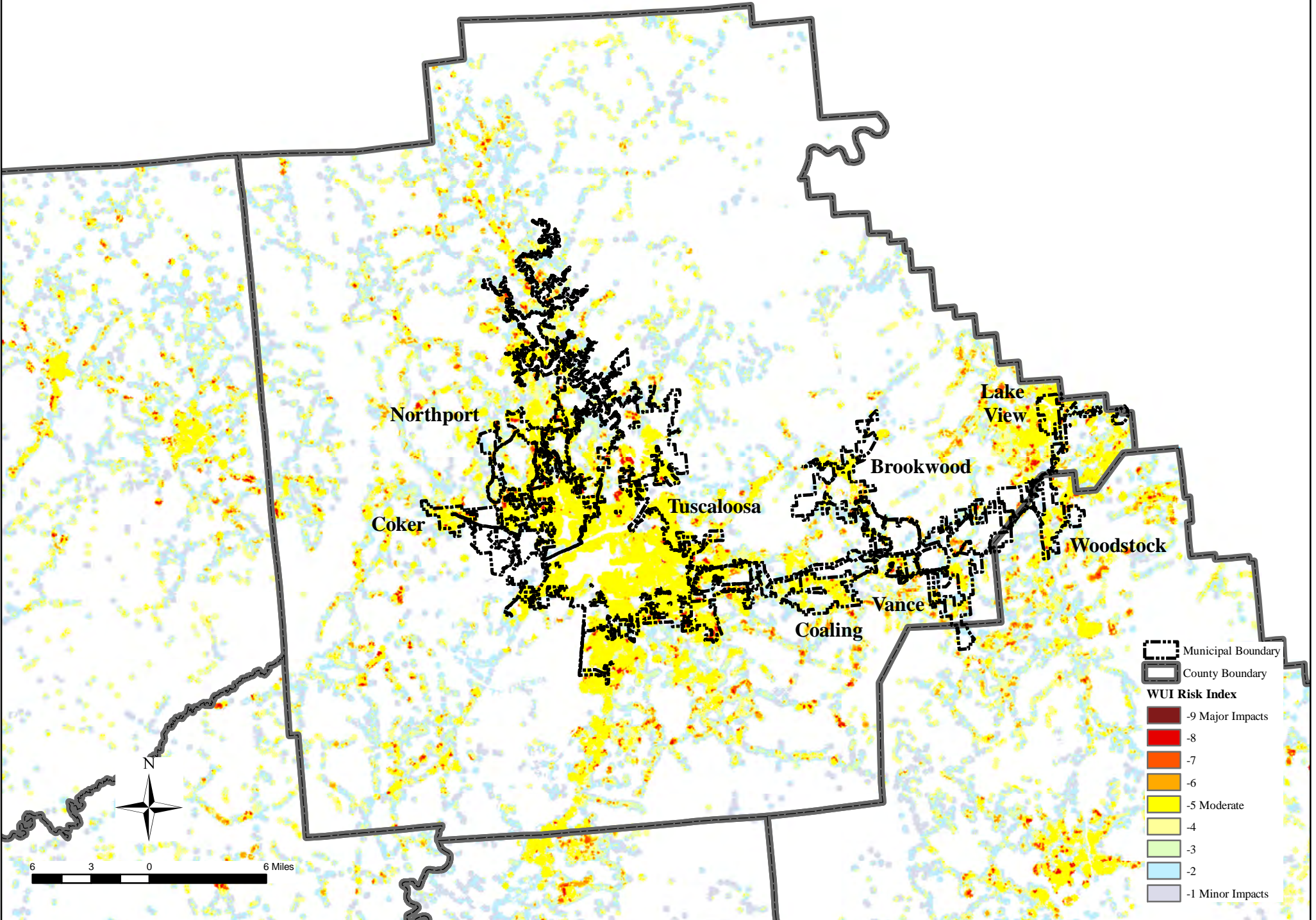
Pickens County WUI Risk Index



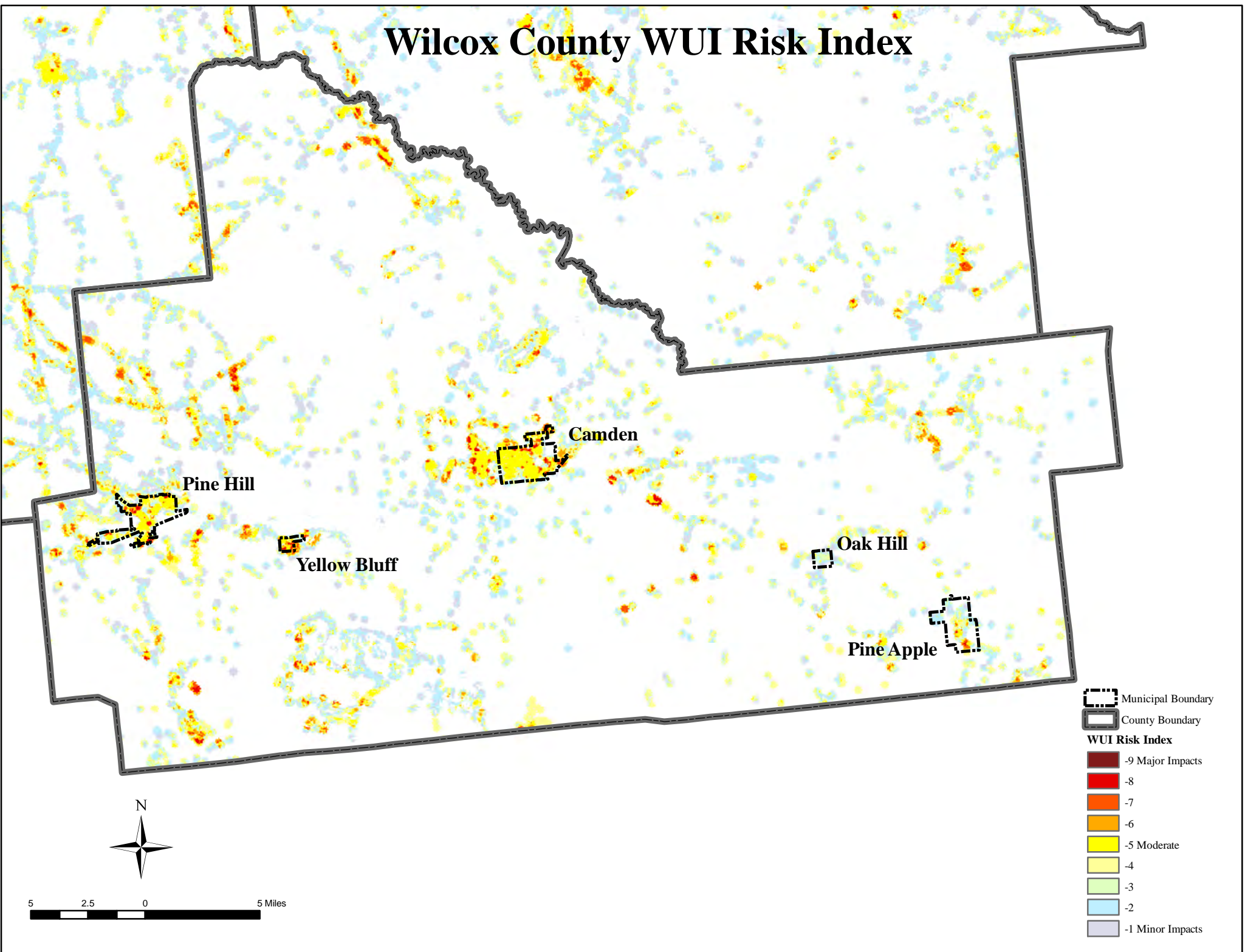
Sumter County WUI Risk Index



Tuscaloosa County WUI Risk Index



Wilcox County WUI Risk Index



Pine Hill

Camden

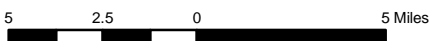
Yellow Bluff

Oak Hill

Pine Apple

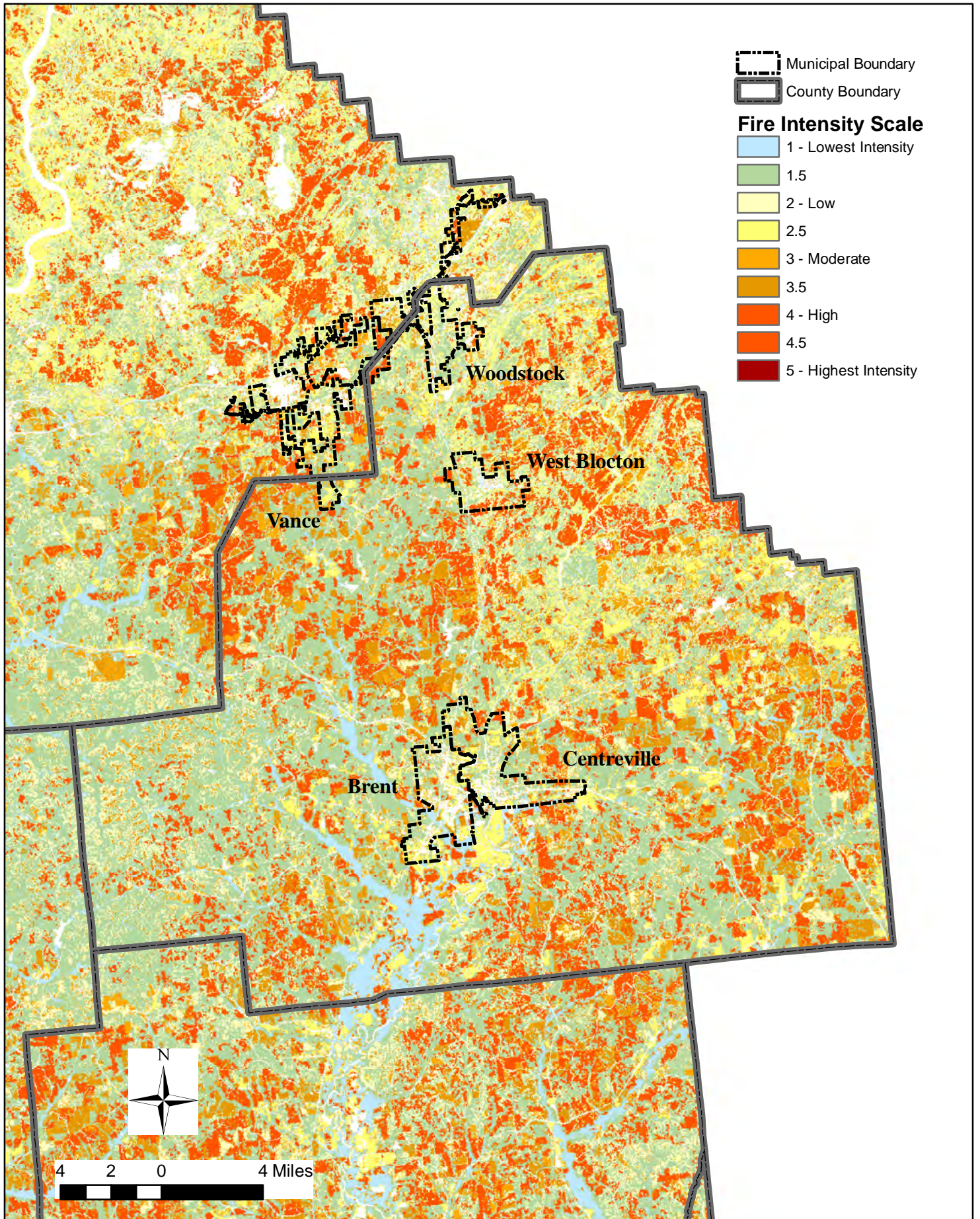
- Municipal Boundary
- County Boundary

- WUI Risk Index**
- 9 Major Impacts
 - 8
 - 7
 - 6
 - 5 Moderate
 - 4
 - 3
 - 2
 - 1 Minor Impacts

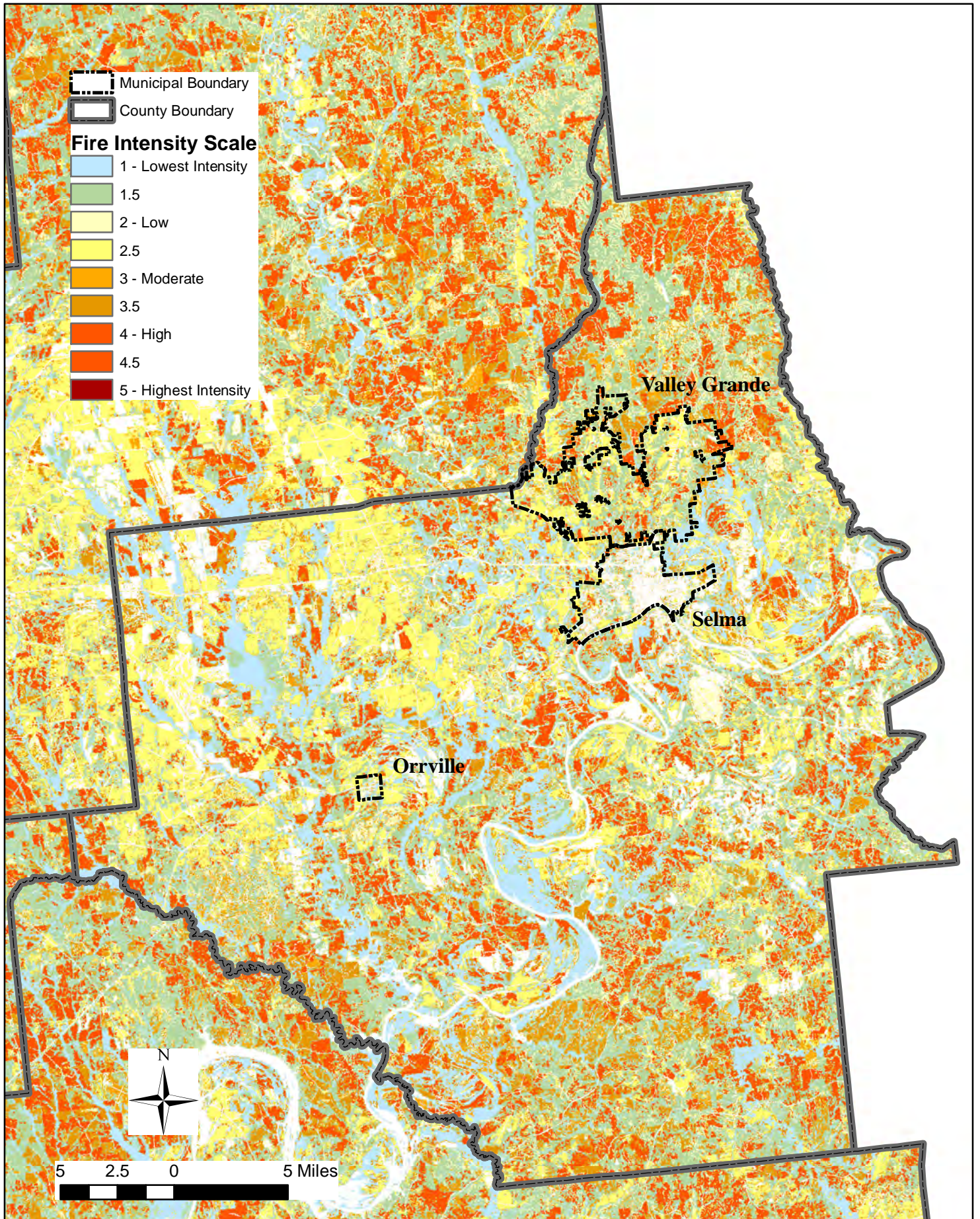


Wildfire Intensity by Jurisdiction

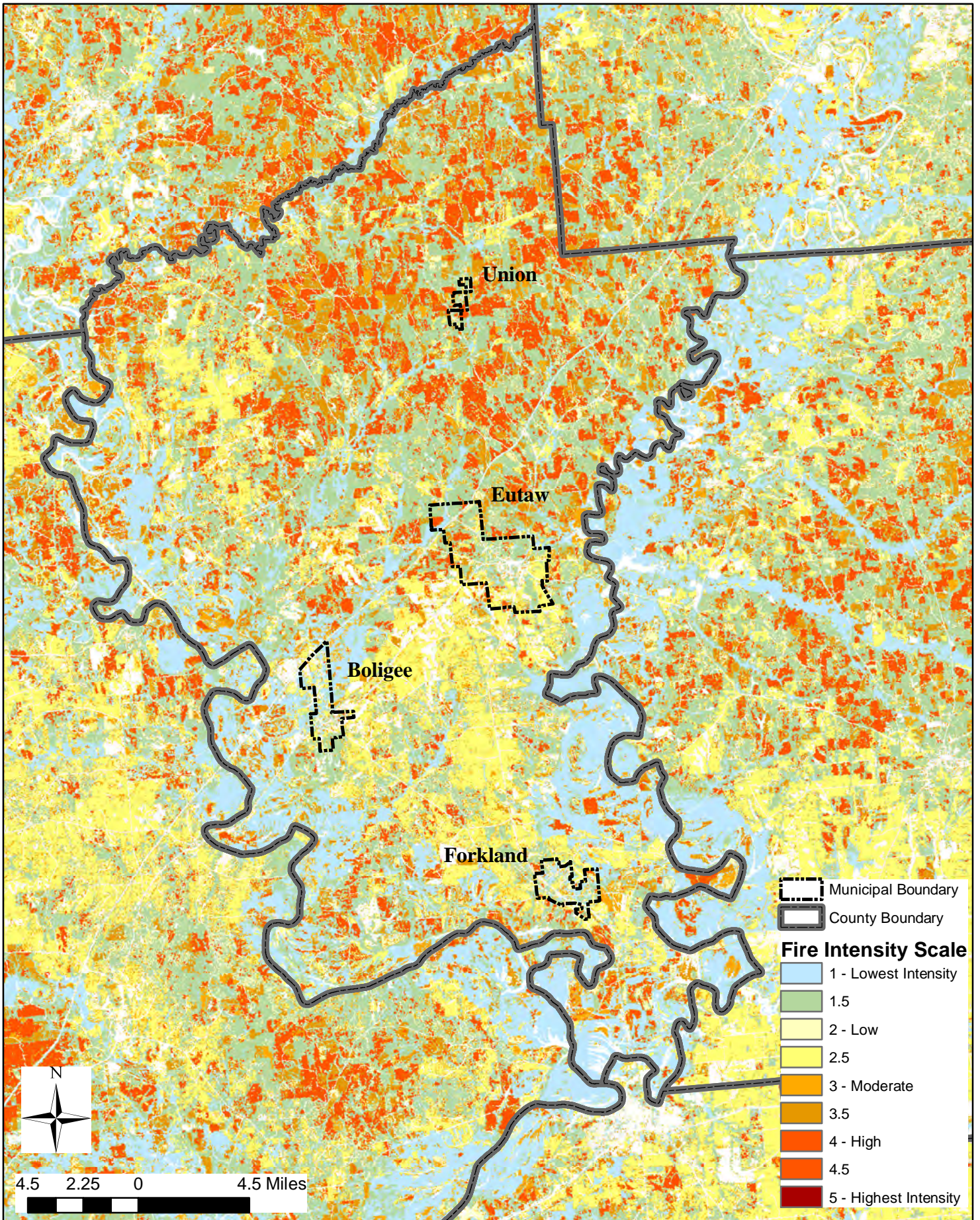
Bibb County Fire Intensity Scale



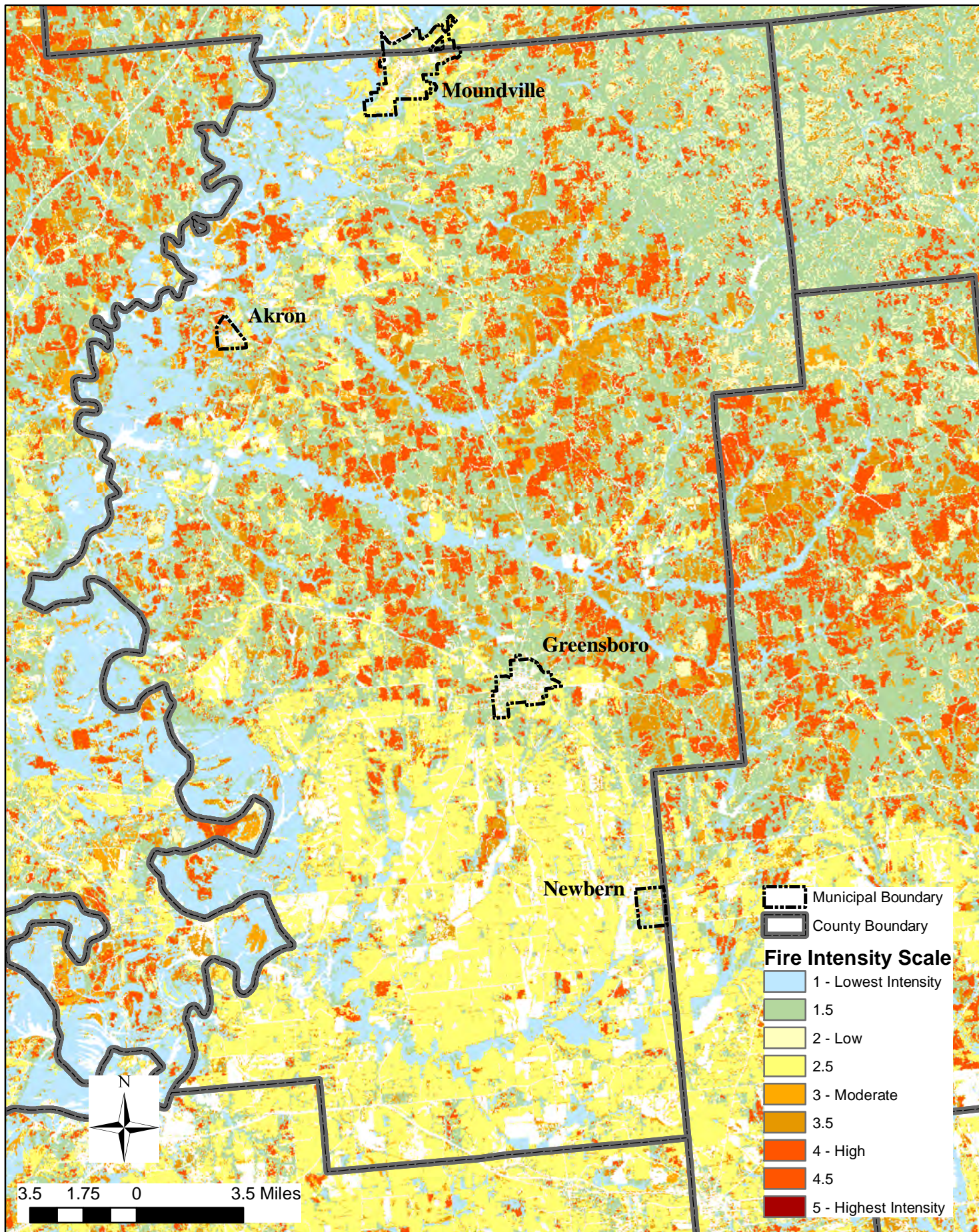
Dallas County Fire Intensity Scale



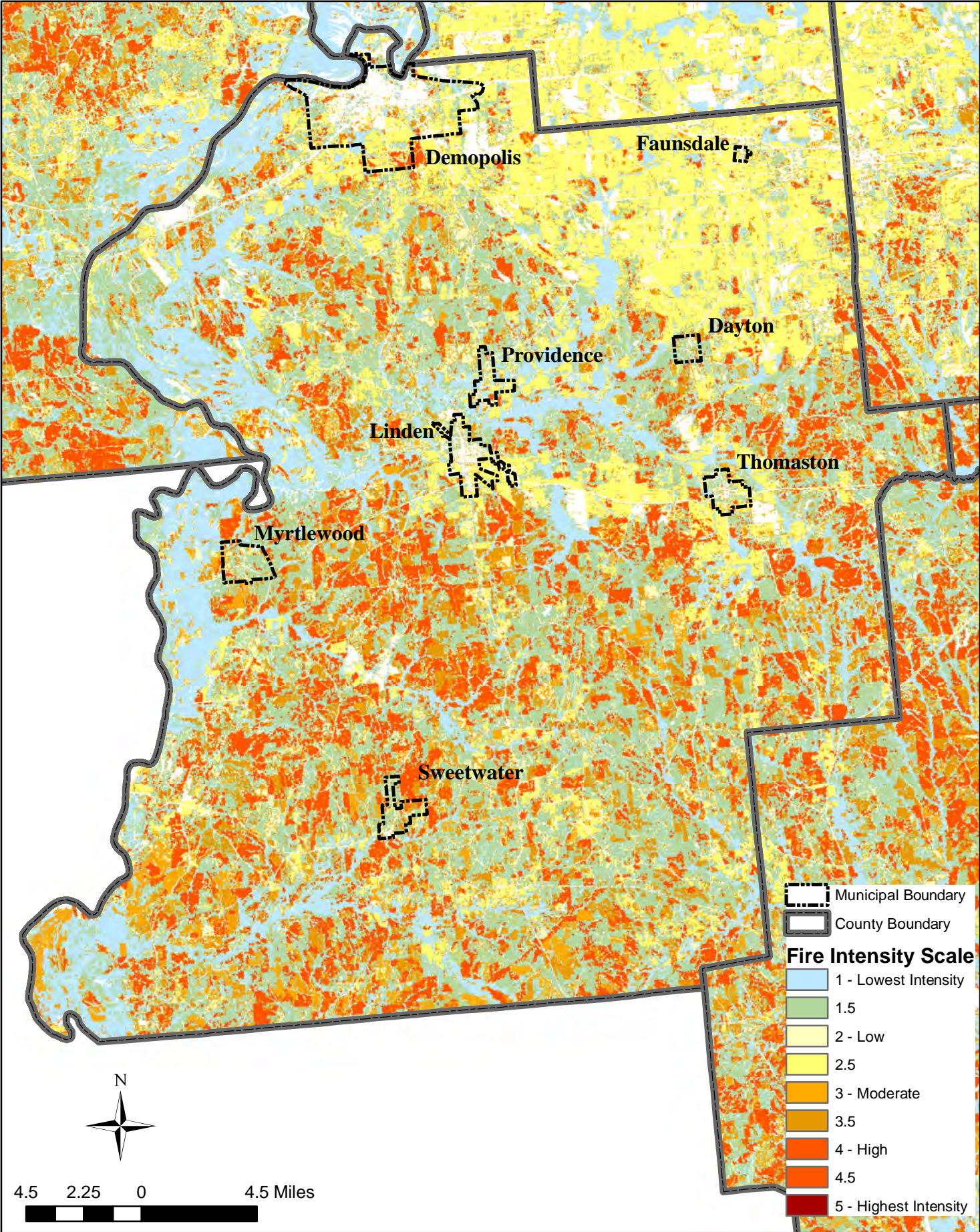
Greene County Fire Intensity Scale



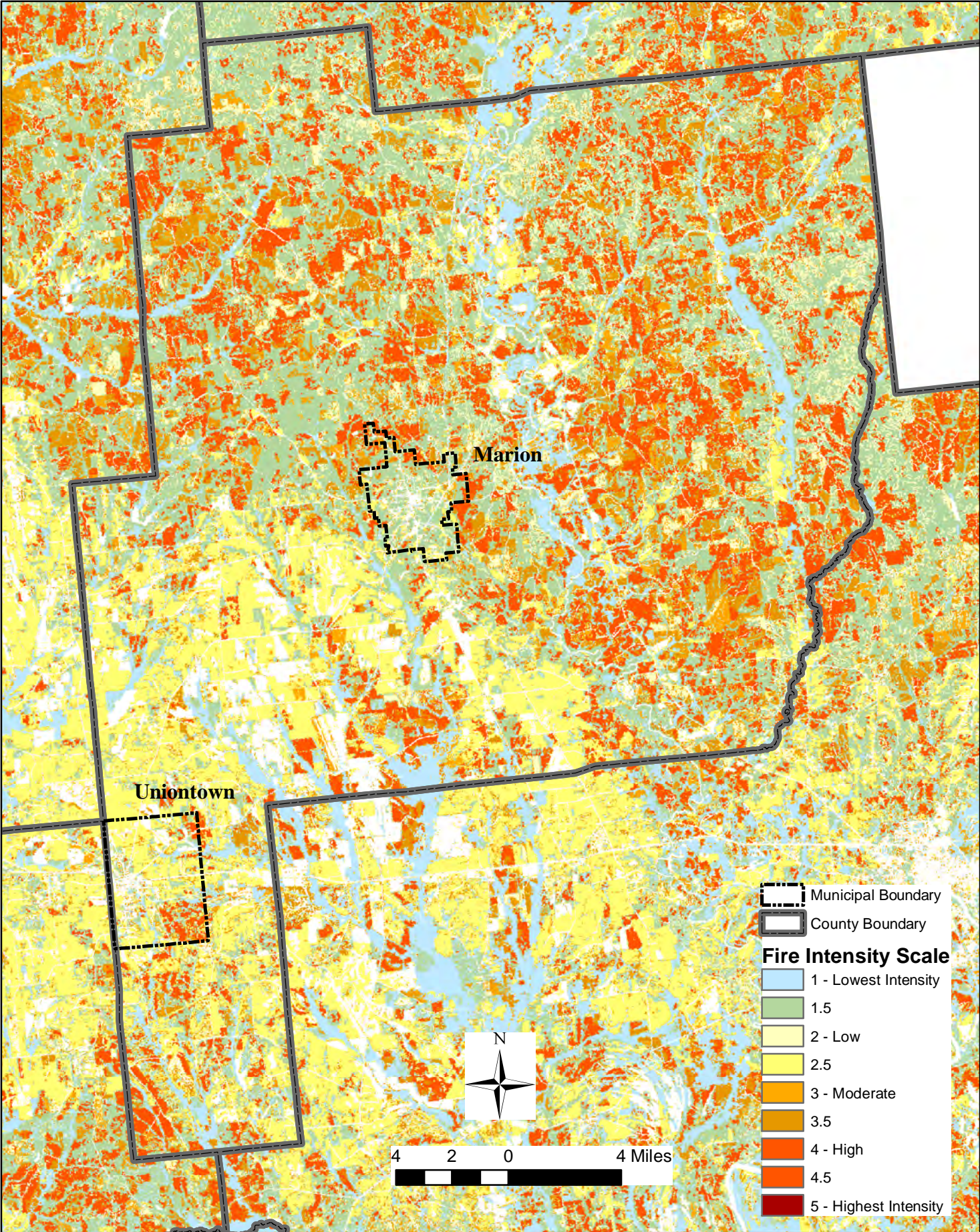
Hale County Fire Intensity Scale



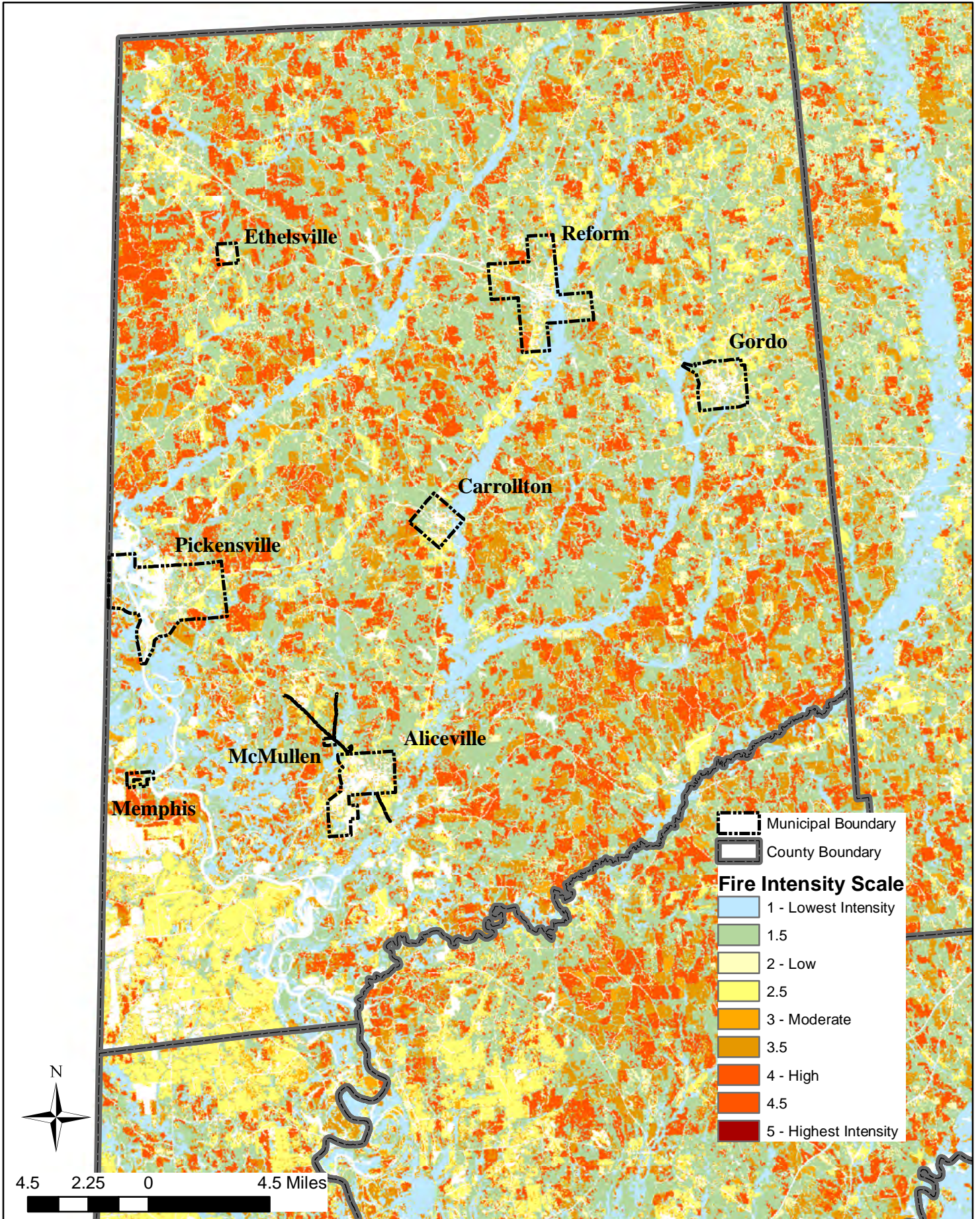
Marengo County Fire Intensity Scale



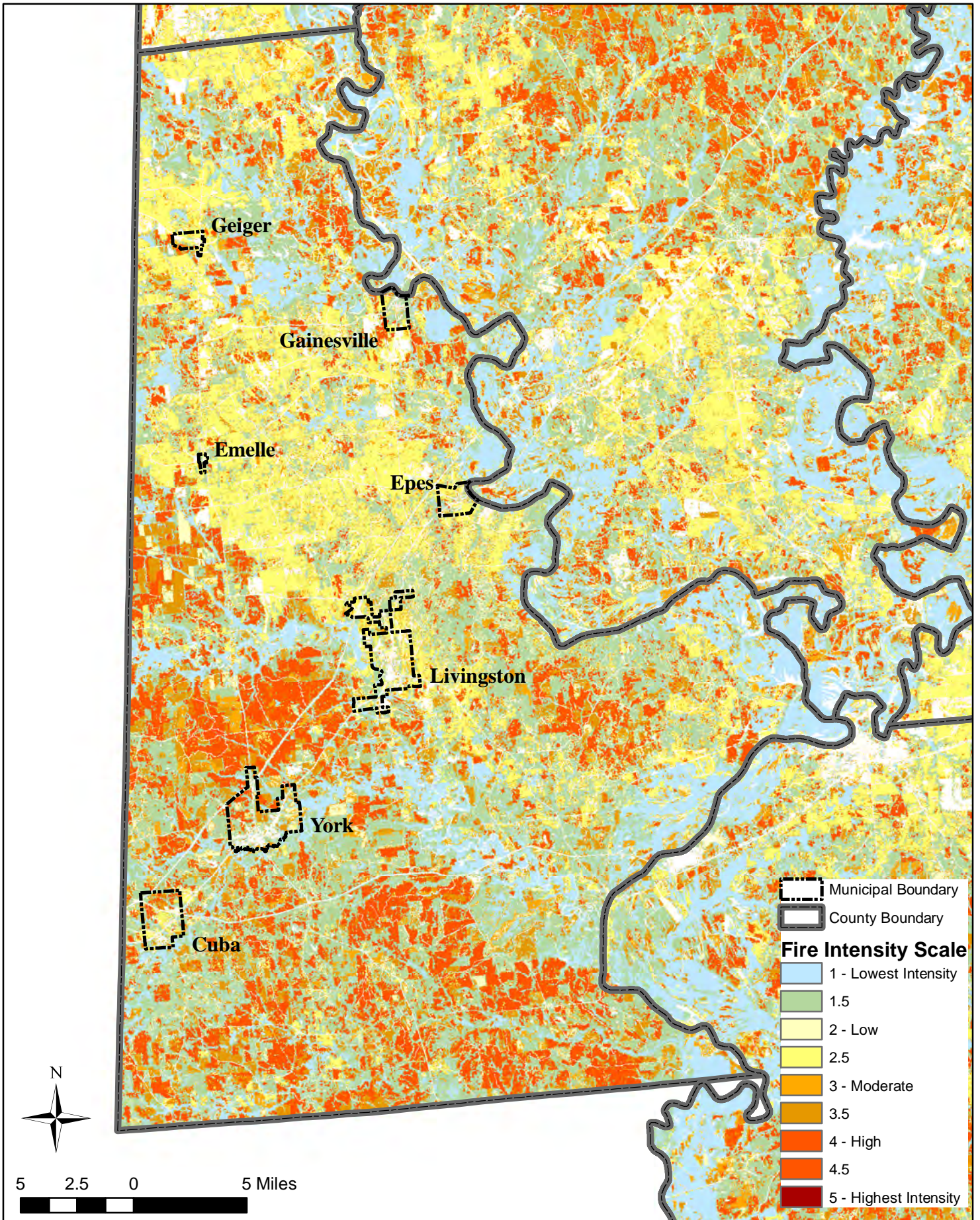
Perry County Fire Intensity Scale



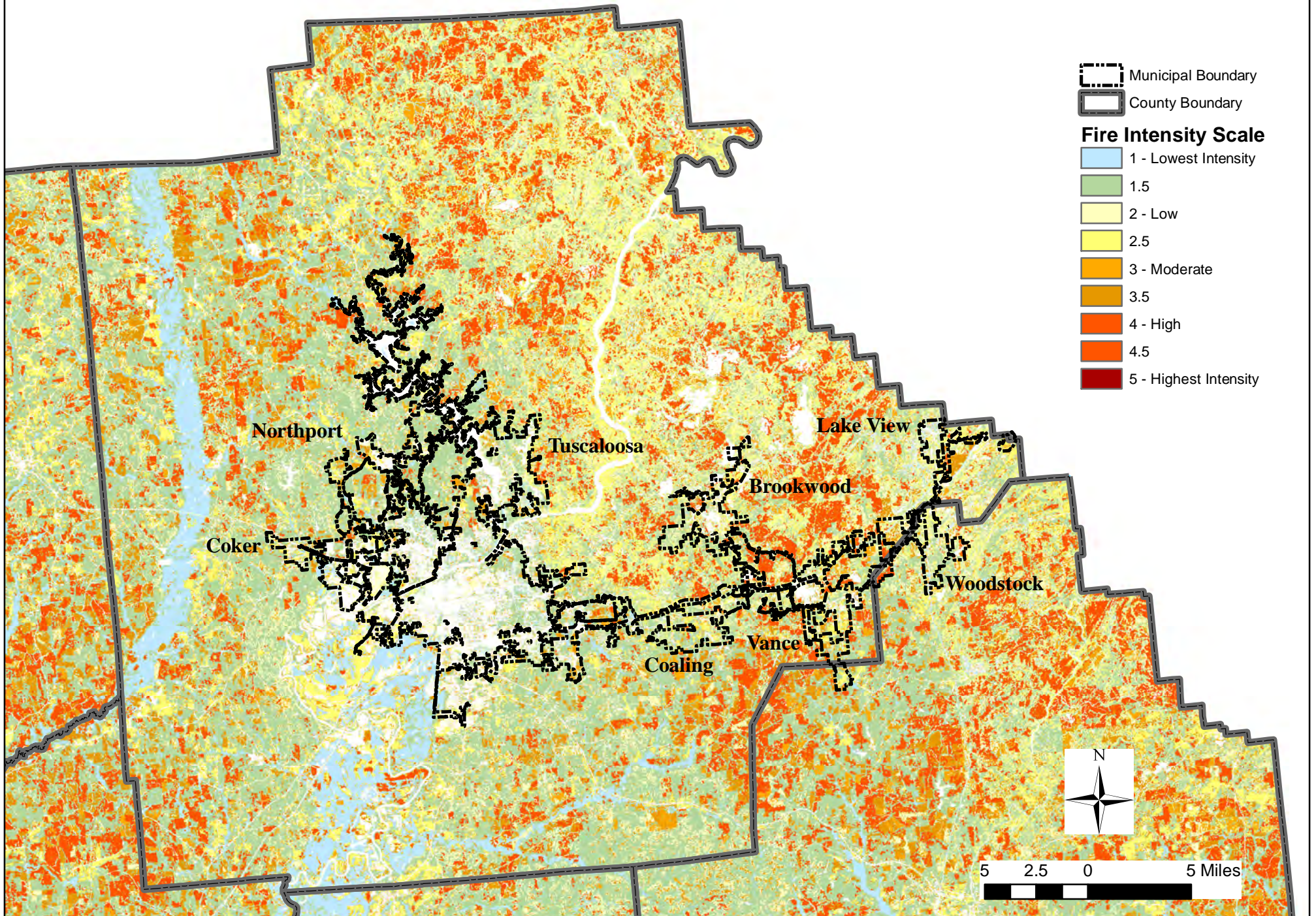
Pickens County Fire Intensity Scale



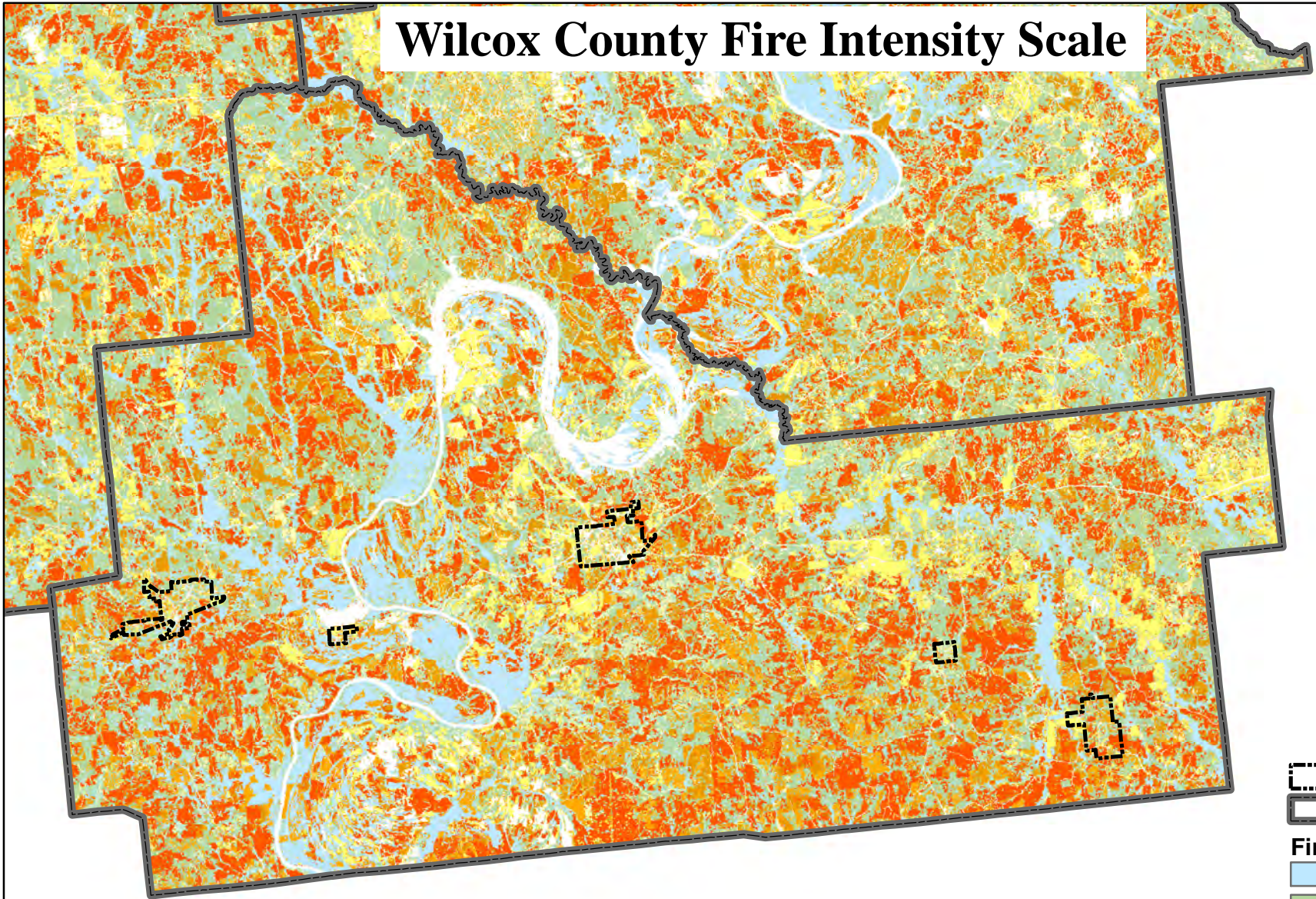
Sumter County Fire Intensity Scale




Tuscaloosa County Fire Intensity Scale



Wilcox County Fire Intensity Scale

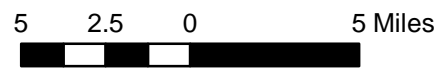


 Municipal Boundary

 County Boundary

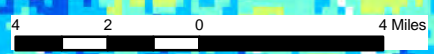
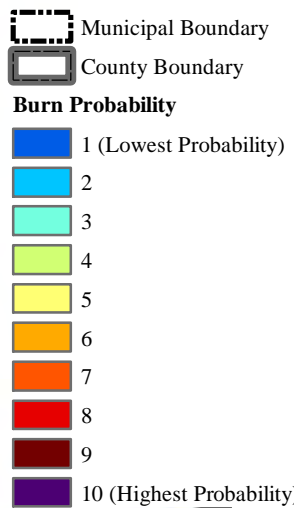
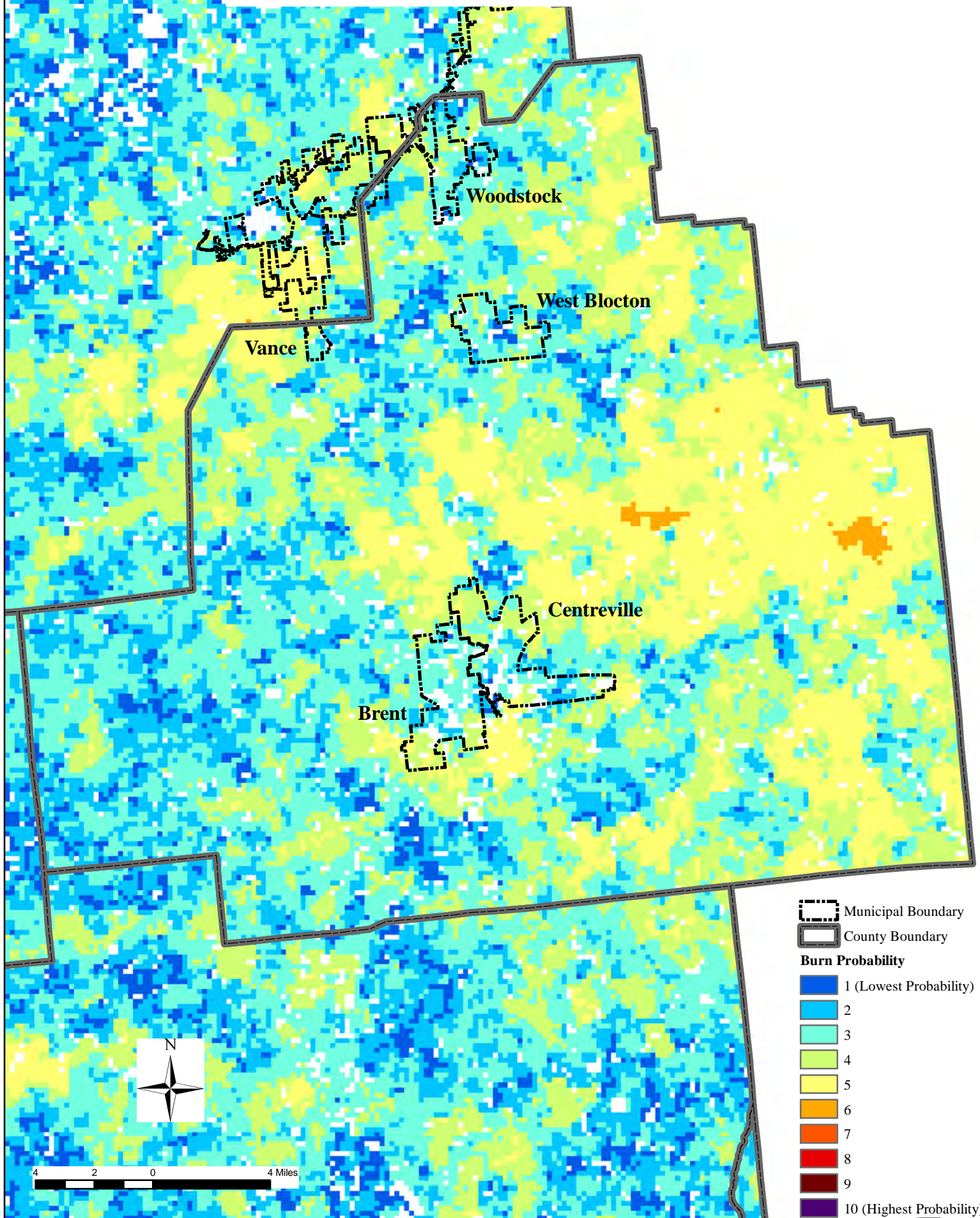
Fire Intensity Scale

-  1 - Lowest Intensity
-  1.5
-  2 - Low
-  2.5
-  3 - Moderate
-  3.5
-  4 - High
-  4.5
-  5 - Highest Intensity

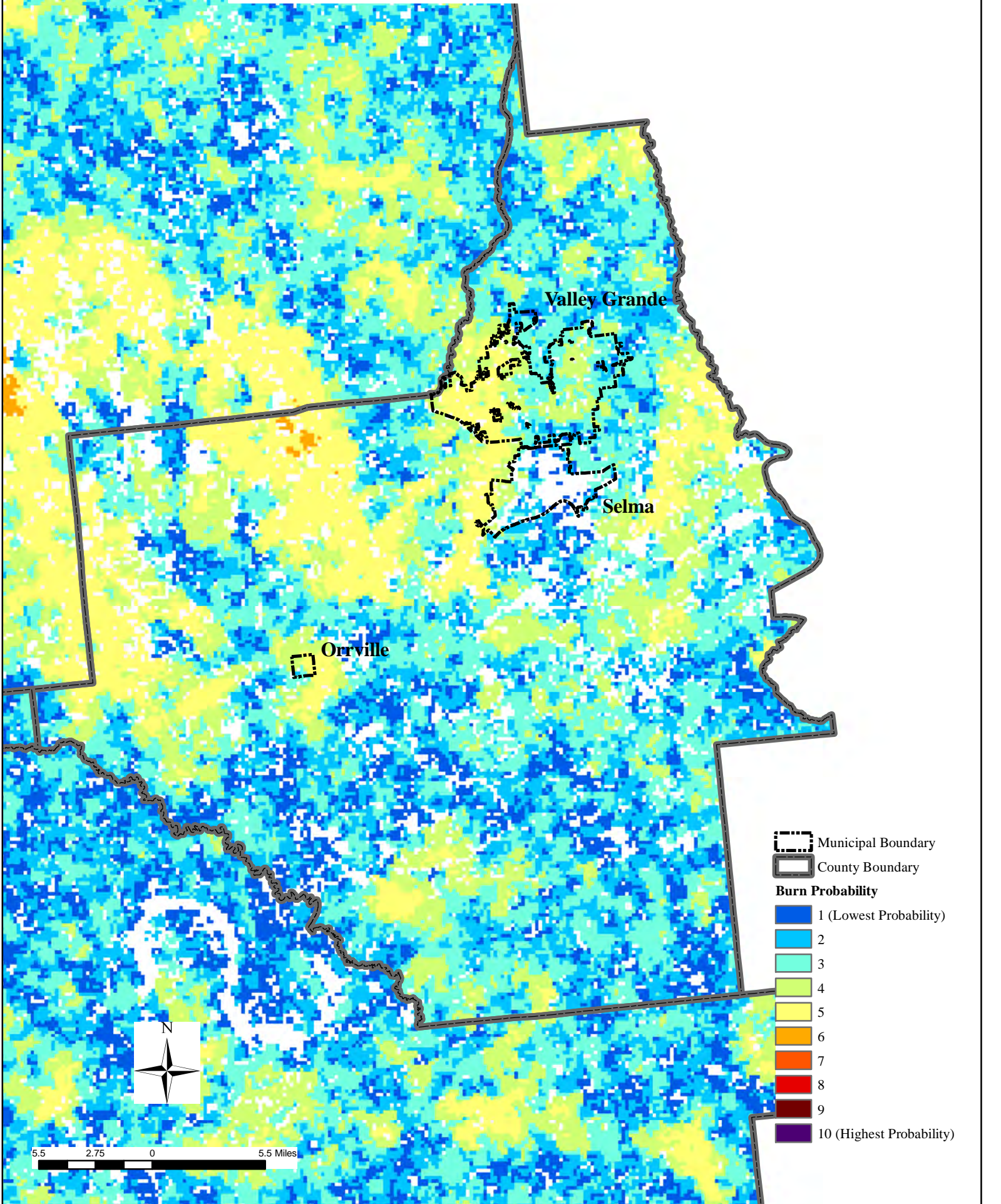


Wildfire Burn Probability by Jurisdiction

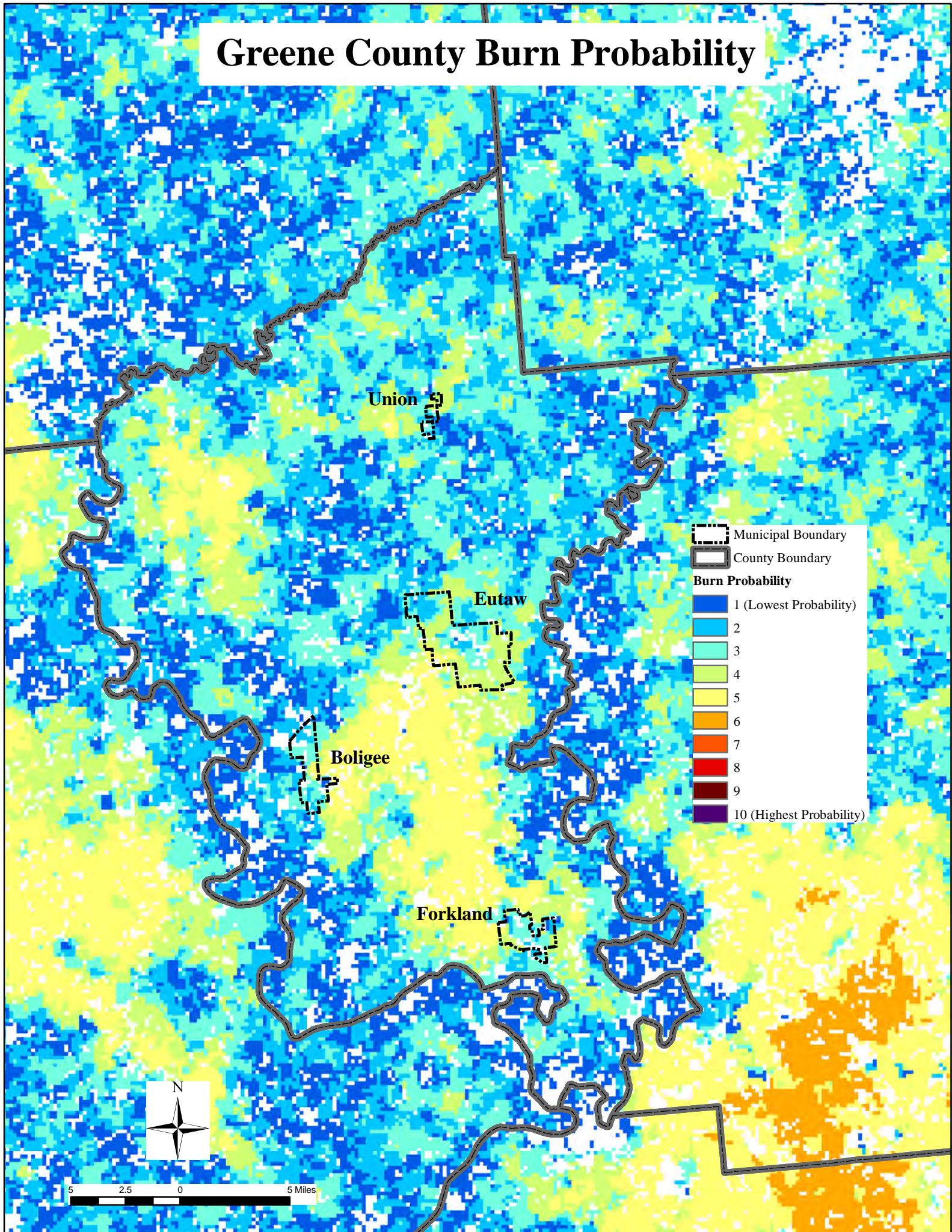
Bibb County Burn Probability



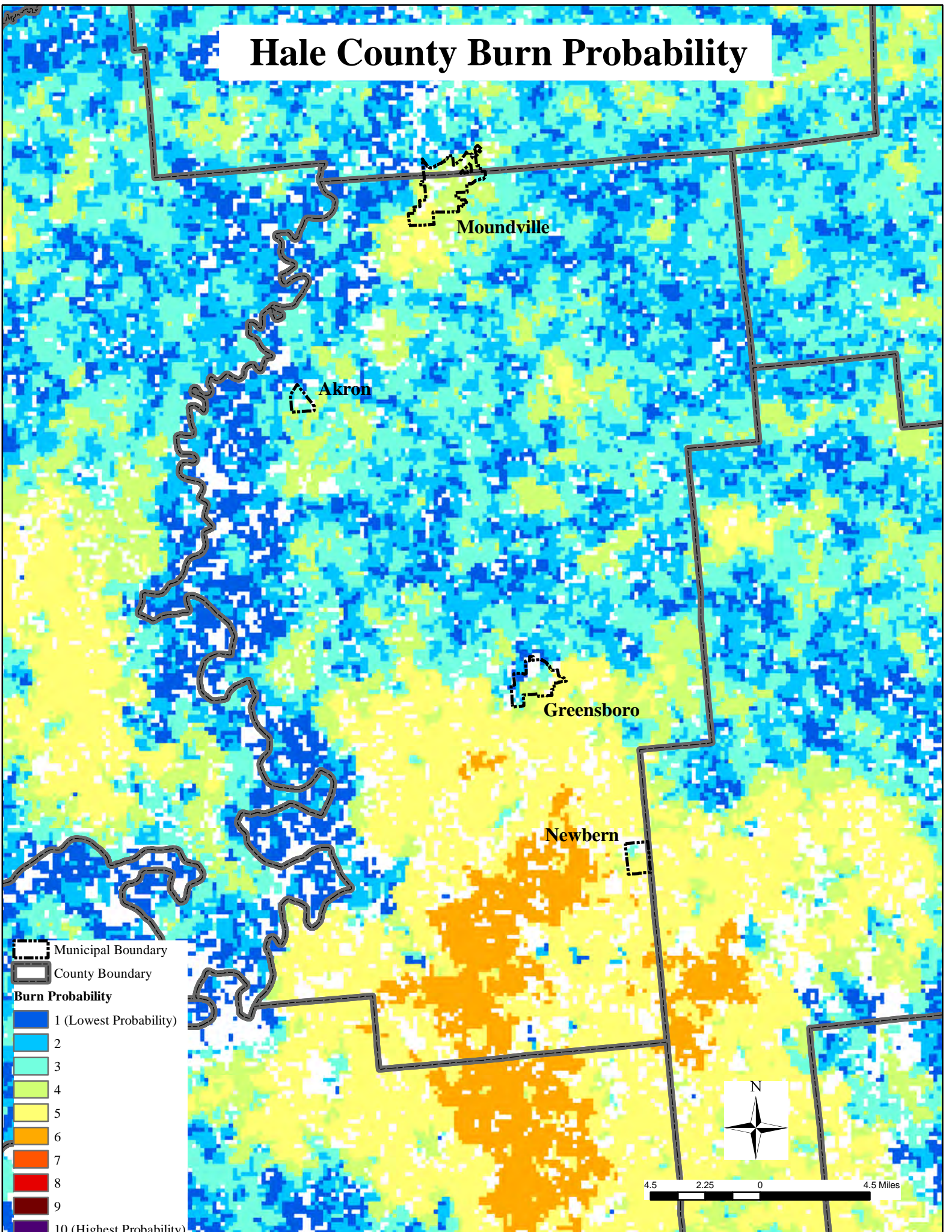
Dallas County Burn Probability





Greene County Burn Probability













Hale County Burn Probability





 Municipal Boundary

 County Boundary

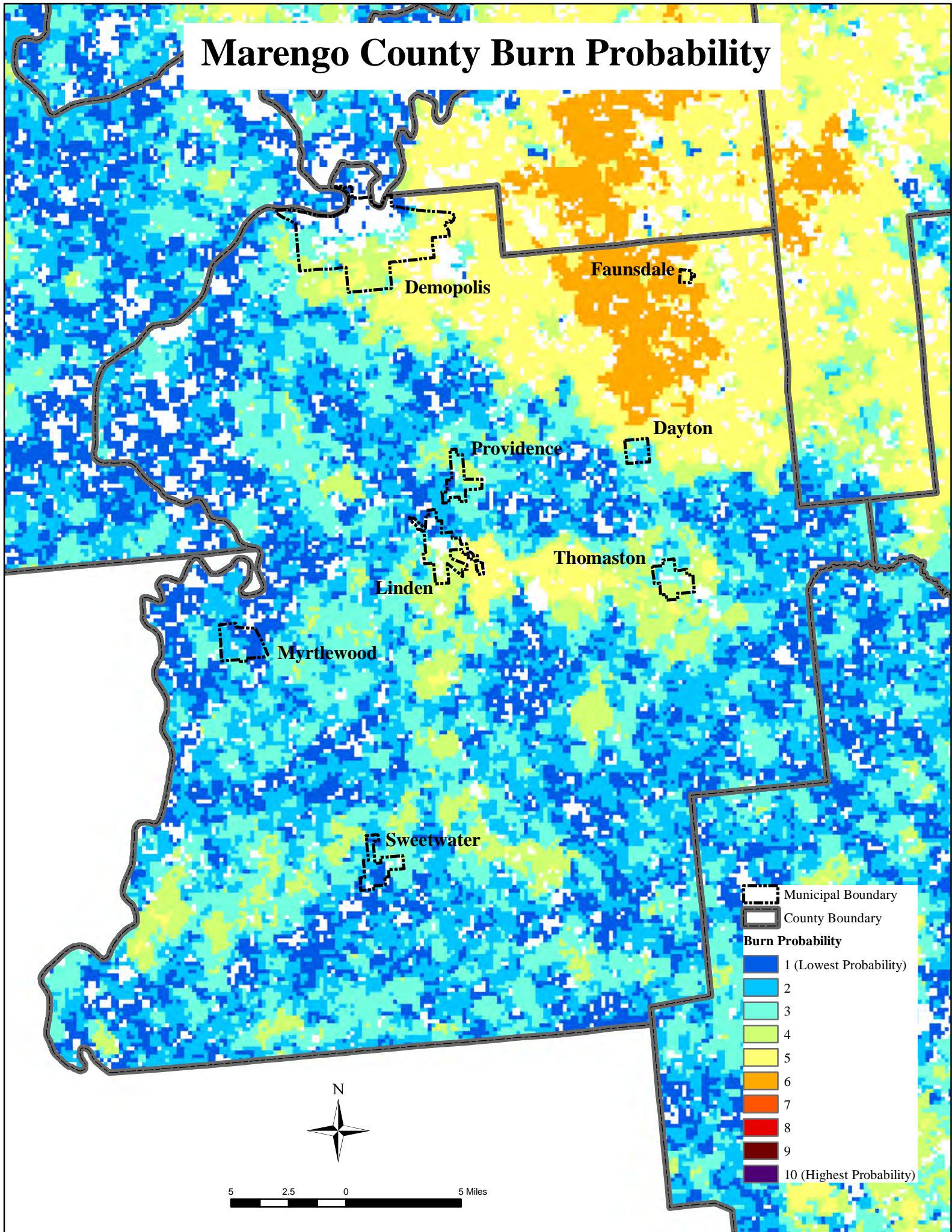
Burn Probability


	1 (Lowest Probability)
	2
	3
	4
	5
	6
	7
	8
	9
	10 (Highest Probability)







Marengo County Burn Probability





 Municipal Boundary


 County Boundary


Burn Probability


 1 (Lowest Probability)


 2


 3


 4


 5

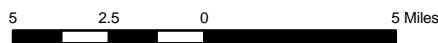
 6

 7

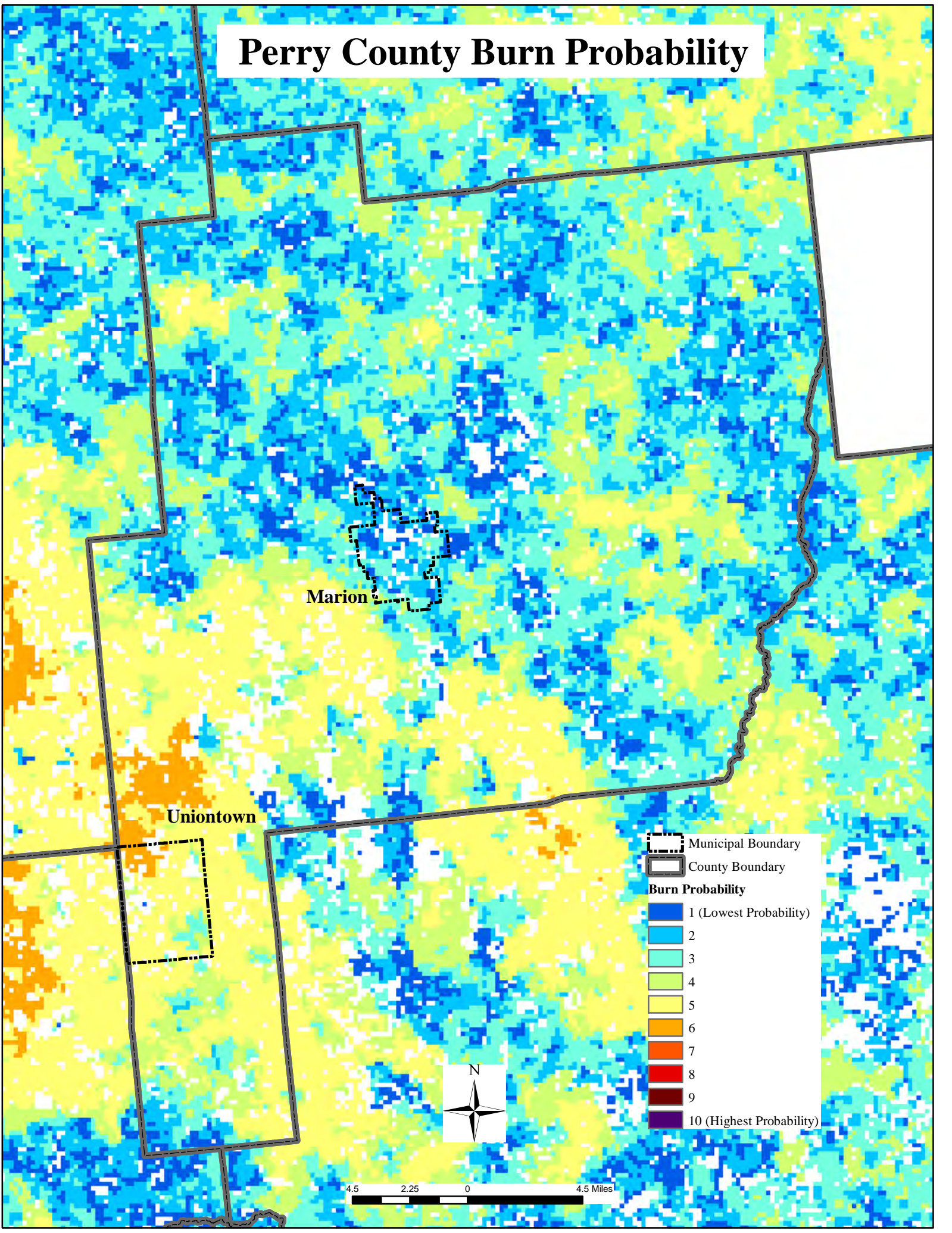
 8

 9

 10 (Highest Probability)



Perry County Burn Probability



Marion

Uniontown

Municipal Boundary

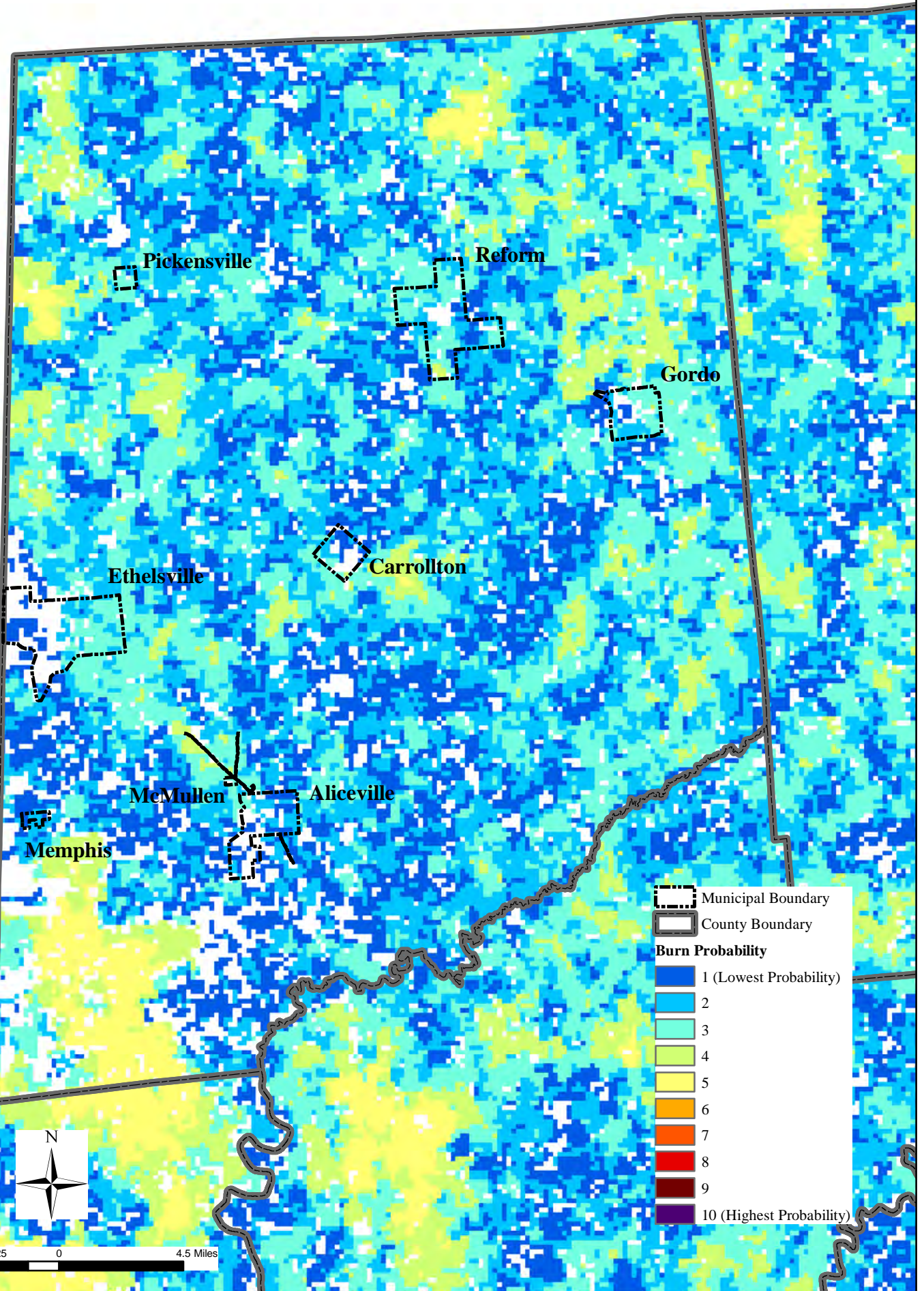
County Boundary

Burn Probability

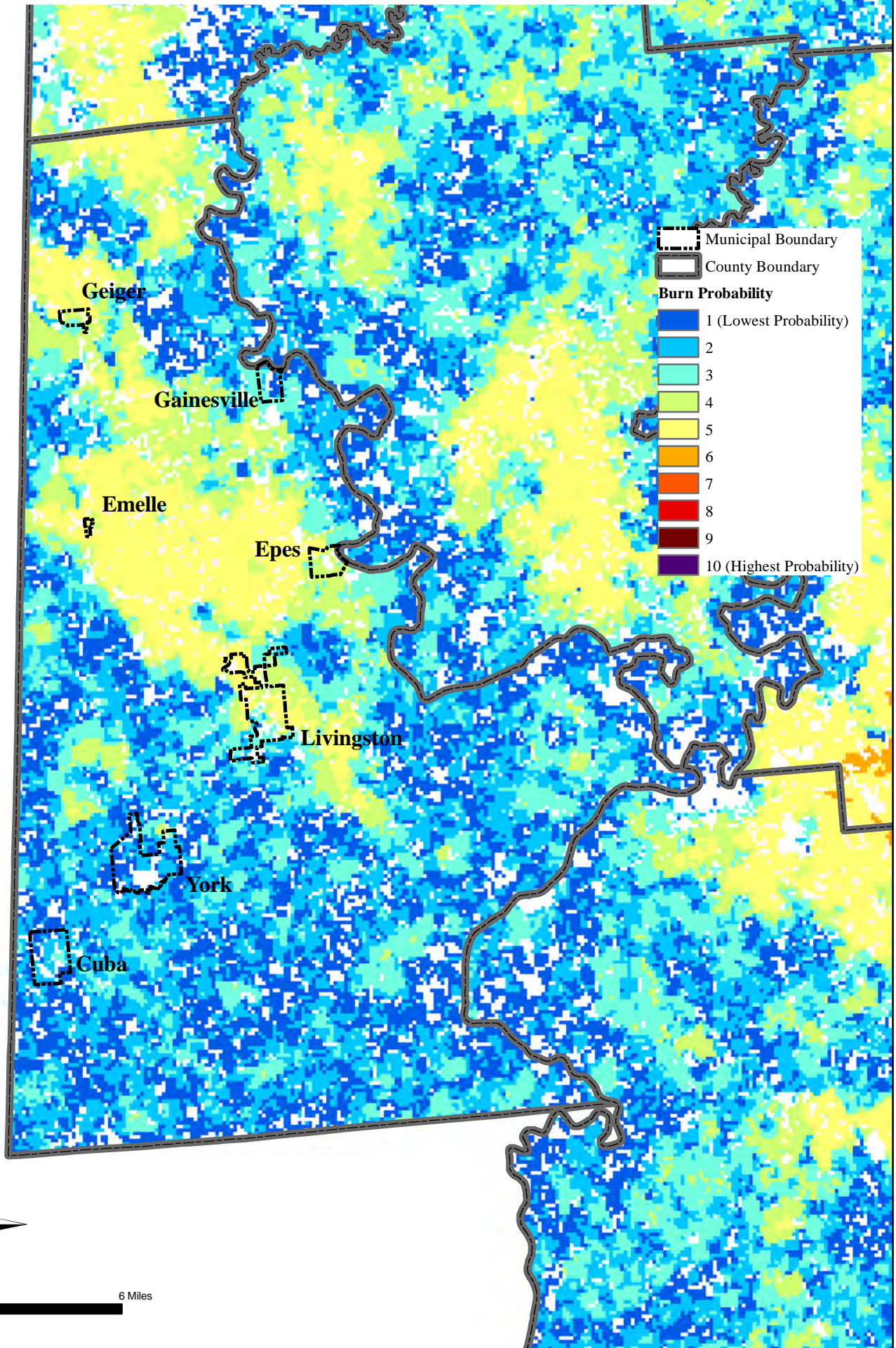
- 1 (Lowest Probability)
- 2
- 3
- 4
- 5
- 6
- 7
- 8
- 9
- 10 (Highest Probability)



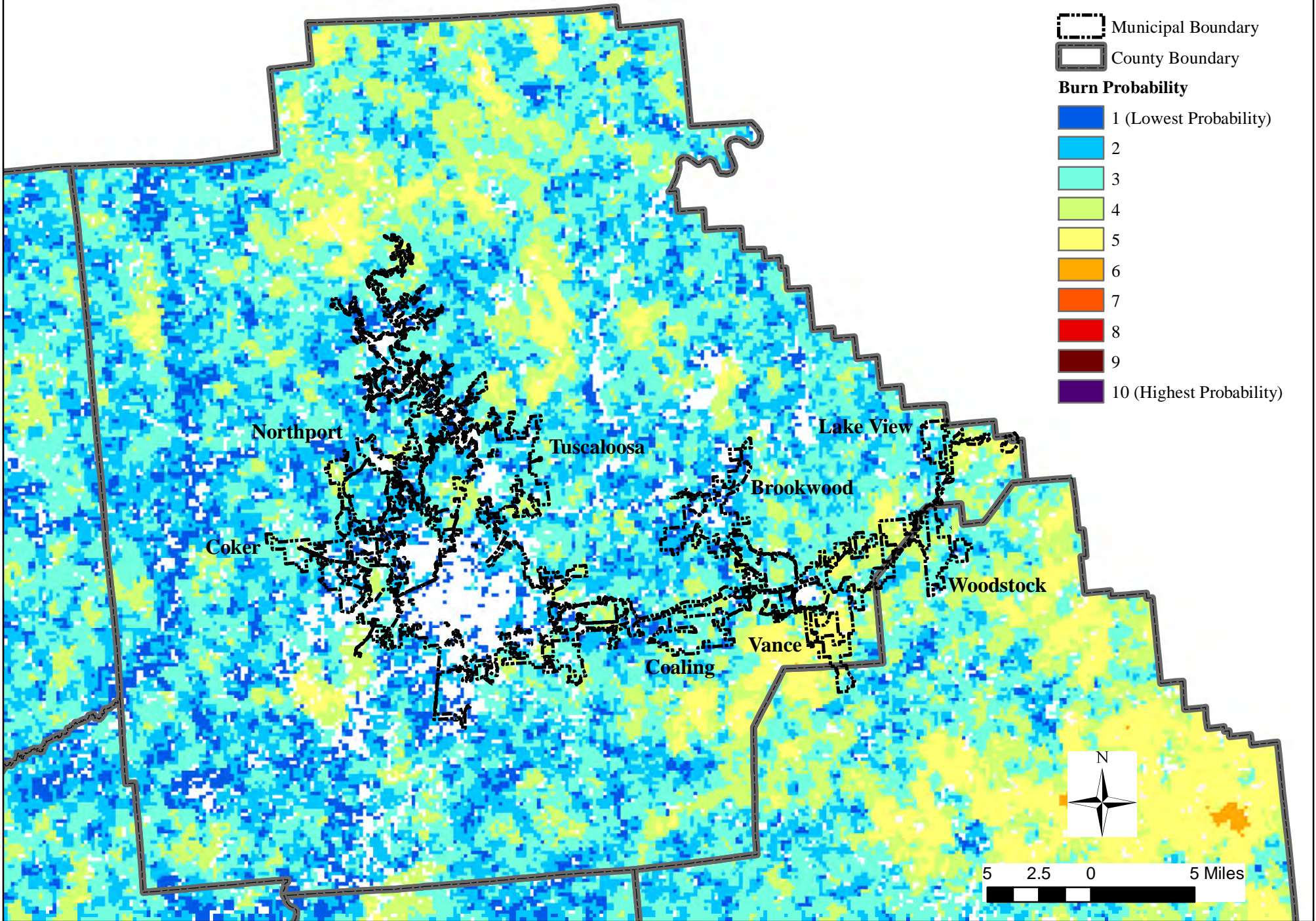
Pickens County Burn Probability



Sumter County Burn Probability



Tuscaloosa County Burn Probability



Wilcox County Burn Probability

