

2023

GRANT AND LOAN

GUIDE



for Local Governments



West Alabama Regional Commission P O Box 509 Northport AL, 35476 . 205-333-2990 . www.warc.info

The **Grant and Loan Guide for Local Governments in West Alabama** was prepared to assist local governments with their community and economic development efforts by providing a resource for commonly used grant and loan programs that are available to counties and municipalities in the West Alabama region.

This document is posted at <https://www.warc.info>
under the PLANNING AND DEVELOPMENT tab in the Planning Documents section.

For information regarding this document, please contact Pamela Trammell
West Alabama Regional Commission
4200 Hwy 69 North
P. O. Box 509
Northport, AL 35476-0509
Telephone: 205-333-2990
Fax: 205-333-2713
Email: pamela.trammell@westal.org

This document was funded, in part, through a grant from the Economic
Development Administration.

(Revised February 2023)



GRANT AND LOAN GUIDE

FOR LOCAL GOVERNMENTS IN WEST ALABAMA

I.	INTRODUCTION	1
II.	GRANT PROGRAMS	3
	Alabama Department of Economic and Community Affairs (ADECA)	5
	Community and Economic Development	5
	Energy	10
	Law Enforcement and Traffic Safety	12
	Alabama Federal Initiatives and Recreation	14
	Special Programs Unit, Healthy Food Financing	16
	Alabama Department of Environmental Management (ADEM)	17
	Alabama Department of Transportation (ALDOT)	18
	Alabama Historical Commission	22
	Alabama State Council on the Arts	23
	America Walks	24
	Appalachian Regional Commission (ARC)	25
	Delta Regional Authority (DRA)	27
	Economic Development Administration (EDA)	28
	Environmental Protection Agency (EPA)	29
	Federal Emergency Management Agency (FEMA)	30
	National Association of Realtors	32
	National Endowment for the Humanities	33
	People for Bikes Community Grant Program	34
	State Farm Company Grants	35
	Tombigbee Resource, Conservation, & Development	36
	United States Department of Justice (USDOJ)	38
	USDA Agricultural Marketing Services	39
	USDA National Institute of Food and Agriculture	42
	USDA Rural Development	43
	Waste Management	49
III.	LOAN PROGRAMS	51
	Alabama Department of Economic and Community Affairs (ADECA)	53
	Alabama Department of Environmental Management (ADEM)	56
	Alabama League of Municipalities (ALM)	57
	Alabama Rural Water Association (ARWA)	58
	Alabama Transportation Infrastructure Bank (ATIB)	59
	Communities United / RCAP	60
	Environmental Protection Agency (EPA) WIFIA	62
	USDA Rural Development	63
	United Bank	65
IV.	FOUNDATION RESOURCES	67

APPENDICES:

- A. West Alabama Municipalities and Mayors
- B. ARC and DRA Distress Designations
- C. West Alabama 2020-2010 Population Change
- D. CDBG Low and Moderate-Income Data
- E. CDBG Beneficiary Survey Form (PY2022 Income Limits)
- F. CDBG Economic Development Employee Income Certification (PY2022 Income Limits)
- G. USDA Engineering Fee Scale
- H. State of Alabama Building Commission Architectural Fee Scale
- I. State Legislature Districts
- J. US Congressional Districts

I. INTRODUCTION

This guide was prepared by WARC staff to assist local governments with information about the most commonly used federal and state grant and loan programs for counties and municipalities. While additional funding may be made available to local governments for special initiatives or in response to recent events, the programs included here have proved the most reliable and useful to our members on a regular basis.

Please note, however, even a longstanding program may not be allocated funding in a given fiscal year, or may see its allocation reduced from what it had been in previous years. These realities will always be a factor in seeking funding assistance, so it is always best to contact the funding source or WARC staff to confirm that the program will be offered during the year in which you intend to apply, get the pertinent details about how much you can request, match requirements, and verify that your project activity is eligible.

SEARCHING FOR GRANTS ONLINE

A number of web sites are available to find grant announcements. Some of the most useful are listed below. Additionally, you can sign up for email grant alert services; however, visiting the funding agency's current web site is the best way to ensure the information is timely and accurate. A word of caution, simply searching by a topic or something as general as "Grants" when looking for grants online can yield some very outdated information and may even lead you to believe a program is available when it hasn't existed for many years. Always try to confirm the details of the program before you get too far along in the development of your project.

- Catalog of Federal Domestic Assistance <https://sam.gov/content/assistance-listings>
- Grants.gov www.grants.gov
- USA.gov www.usa.gov
- Americantrails.org www.americantrails.org

PREPARING TO APPLY FOR GRANTS

Registration in the ***State of Alabama Accounting and Resource System (STAARS)*** is required if grantee payments are issued by the State of Alabama. **There is no charge to register.**

<http://vendors.alabama.gov/faq.aspx> frequently asked questions

<https://procurement.staars.alabama.gov/> to register/activate

Federal agencies require applicants to register with the ***System for Award Management (SAM)*** <https://www.sam.gov/SAM/> **SAM** is a **FREE** Federal Government owned and operated web site. You must register your entity in order to do business with the federal government or receive federal grant funds, including federal funds that come to you from the state. **There is no charge to register.** Registration must be updated annually to remain ACTIVE in the system. In addition, you must set up a username and update the password by changing it at prescribed intervals. For assistance contact the SAM helpdesk 877-771-9512.

IMPORTANT ITEMS YOU WILL NEED FOR SAM REGISTRATION

1. SAM.gov no longer uses the Data Universal Numbering System (DUNS); it now uses a **Unique Entity Identifier (generated by SAM.gov)** used across the federal government. The Unique Entity ID is a 12-character alphanumeric ID assigned to an entity by SAM.gov. As part of the transition, the DUNS Number has been removed from SAM.gov. Entity registration, searching, and data entry in SAM.gov now require use of the new Unique Entity ID. www.SAM.gov

2. **Federal Tax Identification Number (TIN or EIN)** <https://www.irs.gov/businesses/small-businesses-self-employed/apply-for-an-employer-identification-number-ein-online>

3. **North American Industry Classification System code (NAICS)** www.census.gov/eos/www/naics/

The 2017 NAICS code and description for units of local government is:

921140 Executive and Legislative Offices, Combined.

Some agencies request that applications be submitted online. Your entity and a designated/authorized individual will need to register with that agency's system and create a username and password. Maintaining multiple registrations and updating passwords requires diligent oversight. It is recommended that all departments be aware of the different registrations that your local government may have. It is not uncommon for the Police or Fire Department, for example, to have a separate identification number. Keep track of all the numbers so that when registrations or applications are made the correct identification numbers will match the SAM registration as required.

CONFIRM YOUR ELIGIBILITY

It is always good to know where to find the basic information used to determine your eligibility for programs that have such requirements. To assist you, population figures, county distress designations for certain federal programs and criteria used with the State's CDBG program are provided as references.

WE'RE HERE TO HELP

Please let us know if we can assist you in any way with your project. Your regional planning commission serves as the designated planning agency for the following programs:

- Affiliate State Data Center
- Appalachian Regional Commission: Local Development District (LDD)
- Delta Regional Authority: Local Development District (LDD)
- Economic Development Administration: Economic Development District (EDD)
- Metropolitan Planning Organization (MPO)
- Rural Planning Organization (RPO)

As the LDD and EDD, WARC provides complimentary grant writing and technical assistance to our member governments for these and other programs to support your community and economic development efforts.

II. GRANT PROGRAMS

ALABAMA DEPARTMENT OF ECONOMIC AND COMMUNITY AFFAIRS (ADECA)

www.adeca.alabama.gov

CONTACT **COMMUNITY AND ECONOMIC DEVELOPMENT (CED Division)**

Kathleen Rasmussen, PhD, CED Division Chief (334) 353-0323
kathleen.rasmussen@adeca.alabama.gov

PROGRAM **COMMUNITY DEVELOPMENT BLOCK GRANT (CDBG)**

FUND TITLE **A. Competitive Fund, Single purpose or multi-purpose activities**

GRANT CYCLE
Application due date announced at workshop; typically, by early summer.

ELIGIBILITY

Applicants: Non-entitlement cities (excludes members of the Jefferson or Mobile consortium), counties (excludes Jefferson and Mobile). Applicants must maintain active registration with SAM and STAARS.

Activities: Water and Sewer extensions and rehabilitation, Streets, Drainage, Housing Rehabilitation, Neighborhood and Downtown Revitalization, Professional Services e.g., engineering, administration within fee scale limits.

Requirements:

Benefit at least 51% low and moderate-income beneficiaries, or eliminate slum and blight, or address an urgent need resulting from an immediate health threat. See current program year thresholds. There can be no open Competitive or Enhancement grant. Annual close-out deadline is March 31.

FUNDING LEVELS

Maximum Request: County \$500,000; Large City (2020 Census population 3,001 +) \$500,000; Small City \$400,000.

Match Requirement: 10% Source: Cash/In-kind

Eligible In-Kind Contribution: Labor, Equipment, Materials

Disbursement Method: Grant

Note: Waiver of match available for applicants with 2020 Census population of 1,000 or less.

FUND TITLE **B. Community Enhancement Fund**

GRANT CYCLE

Application due date announced at workshop; typically, by early summer.

ELIGIBILITY

Applicants: Non-entitlement Local Governments. Applicants must maintain active registration with SAM and STAARS.

Activities: Water, Sewer, Streets, Drainage, Housing Rehab, Senior or Community Center, Demolition, Recreation, Boys & Girls Clubs, Fire Protection, Misc.

Requirements: Benefit 51% low and moderate-income beneficiaries, or eliminate slum and blight, or address an urgent need resulting from an immediate health threat.

See current program year thresholds. No open Competitive or Enhancement grant. Annual close-out deadline is March 31.

FUNDING LEVELS

Minimum Request: \$50,000

Maximum Request: \$400,000

Match Requirement: 10%

Source: Cash/In-kind

Eligible In-Kind Contribution: Labor, Equipment, Materials

Disbursement Method: Grant

Note: Waiver of match available for applicants with 2020 Census population of 1,000 or less.

FUND TITLE C. Economic Development Fund

GRANT CYCLE

Applications accepted on a continuous basis. Award upon approval and as funding is available.

ELIGIBILITY

Applicants: Non-entitlement local governments. Applicants must maintain active registration with SAM and STAARS.

Activities: Land, facilities and infrastructure to benefit industry that will create jobs.

Requirements: Create minimum of 15 permanent jobs to benefit 51% low and moderate-income beneficiaries.

See current program year thresholds. May have open Competitive, Enhancement or Planning grant.

FUNDING LEVELS

Minimum Request: \$50,000

Maximum Request: \$400,000

Match Requirement: 20%

Source: Cash/In-kind

Eligible In-Kind Contribution: Labor, Equipment, Materials

Disbursement Method: Grant

Note: Waiver of match available for Applicants with 2020 Census population of 1,000 or less. State may also waive the grant ceiling for projects that demonstrate significant long-term economic benefit to the State.

FUND TITLE **D. Economic Development Incubator projects**

GRANT CYCLE

Continuous - applications are taken throughout the year. Award upon approval and as funding is available.

ELIGIBILITY

Applicants: Units of local government. Applicants must maintain active registration with SAM and STAARS.

Activities: Facility, infrastructure or program support.

Requirements: Program must benefit at least 51% low and moderate-income beneficiaries. Project must commit to create jobs.

See current program year thresholds.

FUNDING LEVELS

Maximum Request: \$400,000

Match Requirement: 20% Source: Cash/In-kind

Eligible In-Kind Contribution: Labor, Equipment, Materials

Disbursement Method: Grant

Note: Waiver of match available for Applicants with 2020 Census population of 1,000 or less. State may also waive the grant ceiling for projects that demonstrate significant long-term economic benefit to the State.

FUND TITLE **E. Planning Fund**

GRANT CYCLE

Application due date announced at workshop; typically, by early summer.

ELIGIBILITY

Applicants: Non-entitlement local governments. Applicants must maintain active registration with SAM and STAARS.

Activities: Comprehensive plans, Downtown Revitalization plans etc.

Requirements: Benefit 51% low and moderate-income beneficiaries, or eliminate slum and blight, or address an urgent need resulting from an immediate health threat.

See current program year thresholds. May have open Competitive or Enhancement grant.

FUNDING LEVELS

Maximum Request: \$40,000

Match Requirement: 20% Source: Cash/In-kind

Eligible In-Kind Contribution: Labor, Materials

Disbursement Method: Grant

Note: Waiver of match available for applicants with 2020 Census population of 1,000 or less.

CONTACT ADECA ENERGY DIVISION

Jennifer Lee, Division Chief (334)353-3004
Jennifer.Lee@adeca.alabama.gov

PROGRAM STATE ENERGY PROGRAM
(334)242-5290

FUND TITLES

- A. Energy-Efficient Retrofits of K-12 Schools**
- B. Energy-Efficient Retrofits of Local Governments and Non-Profit Organizations**
- C. Energy-Efficient Retrofits of Wastewater Treatment Facilities**

GRANT CYCLE

Opens in June/July. Awards will be made in October.

ELIGIBILITY

Applicants: K-12 school systems, non-profits, and local governments (A,B); wastewater treatment facilities in Alabama (C).

Activities: Focus area/eligible activity varies from year to year (A, B).
The focus area for wastewater treatment facilities in Alabama for the purchase and installation of energy efficiency measures such as supervisory control and data acquisition (SCADA) systems, energy-efficient motors, energy-efficient pumps, variable frequency drives (VFDs), or other eligible efficiency measures relevant to wastewater treatment facilities (C). See current announcement.

Requirements: Recipients must maintain registration in STAARS. The facility must be owned by the applicant and must include an energy audit performed by a certified technician. Letter of Credit or alternate form of collateral required.

FUNDING LEVELS

Minimum Request: \$10,000 (A, B, C) Maximum Request: \$25,000 (A, B); \$30,000 (C)

Match Requirement: 20% (A, B, C) Source: Cash or In-Kind

Disbursement Method: State will determine whether cash advance or reimbursement

PROGRAM **ELECTRIC VEHICLE INFRASTRUCTURE PROGRAM**

Shonda Gray, Division Chief (334)242-5365
Shonda.gray@adeca.alabama.gov

FUND TITLES

- D. National Electric Vehicle Infrastructure (NEVI) Formula Program**
- E. Electric Vehicle Infrastructure and Planning Grant Program at ADECA**

GRANT CYCLE

Opens March 1st. Awards will be made 90 days after application is due. Due date announced March 1, 2023.

ELIGIBILITY – All information will be released March 1, 2023

Applicants:

Activities: (E) State-funded program which provides opportunities for charging infrastructure grants in areas of the state and for types of chargers that are not eligible under the federal NEVI program. Ongoing priorities for this program will include fast-charging projects along non-interstate corridors and Level 2 charging projects at locations where people have longer dwell times, including workplaces, tourist attractions, shopping centers, and near multi-family dwellings.

Requirements: (E) EV Infrastructure Funds can cover the acquisition, installation, operation and maintenance of new light duty zero emission vehicle supply equipment for projects. Funds may not be used to purchase of rent real-estate for other capital costs (e.g., construction of buildings, parking facilities, etc.) or general maintenance (i.e., maintenance other than of the Supply Equipment).

FUNDING LEVELS

Minimum Request: TBD

Minimum Request: TBD

Match Requirement: 20% (D)

Source: Cash

Disbursement Method: TBD

CONTACT ADECA LAW ENFORCEMENT AND TRAFFIC SAFETY DIVISION

Bill Babington, Division Chief (334)242-5897
Bill.babington@adeca.alabama.gov

PROGRAM EDWARD BYRNE JUSTICE ASSISTANCE GRANT (JAG)

GRANT CYCLE

Open grants for selected activities as announced; typically, during summer.

ELIGIBILITY

Applicants: States and units of local government. Applicants must maintain active registration with SAM and STAARS.

Activities: Assist Law enforcement, drug and crime task forces, equipment (No Vehicles).

Requirements: Funding cannot be used directly or indirectly for security enhancements or equipment to nongovernmental entities not engaged in criminal justice or public safety.

See current year program thresholds.

FUNDING LEVELS

Maximum Request: \$24,000 (may vary with announcement)

Match Requirement: Source: Cash
Equip - 0%, Program Activities - 25%

Disbursement Method: Reimbursement

PROGRAM VICTIMS PROGRAMS

<http://adeca.alabama.gov/Divisions/lets/Pages/VictimsPrograms.aspx>

Contact the Juvenile Justice Specialist to discuss current funding availability by calling 334-353-5311.

FUND TITLES **A. Family Violence Prevention and Services Grant**
B. Victims of Crime Act Victim Assistance Grant
C. STOP Violence Against Women Grant
D. Sexual Assault Services Grant

PROGRAM JUVENILE JUSTICE

<http://adeca.alabama.gov/Divisions/lets/Pages/JuvenileJustice.aspx#sthash.4A4DjxUN.dpuf>

Contact the Juvenile Justice Specialist to discuss current funding availability by calling 334-353-5311.

FUND TITLES **A. Juvenile Justice Formula Grant Program**

GRANT CYCLE

As announced.

ELIGIBILITY

Applicants: State agencies and units of local government and private, non-profits. Applicants must maintain active registration with SAM and STAARS.

Activities: See current year program thresholds.

Requirements: See current year program thresholds.

FUNDING LEVELS

Maximum Request: \$ (Varies with announcement)

Match Requirement: Varies Source:

Disbursement Method: Reimbursement

CONTACT ADECA FEDERAL INITIATIVES AND RECREATION

Crystal Talley, Unit Chief (334) 353-2630
crystal.talley@adeca.alabama.gov

PROGRAM RECREATION PROGRAMS

FUND TITLE A. Land and Water Conservation Fund (LWCF)

GRANT CYCLE

Application information and deadline announced each year as funding is available.

ELIGIBILITY

Applicants: Units of local government, State agencies and State Authorities (except State or local educational institutions). Entities with an open LWCF or Recreational Trails Program (RTP) grant are ineligible to apply; entities may not apply for both programs. Applicants must maintain active registration with SAM and STAARS.

Activities: Outdoor recreation only, land acquisition, playgrounds, ball fields, trails, picnic and camping areas, support facilities, access roads, parking areas, utilities.

Requirements: Existing LWCF funded facilities owned by applicant must be well maintained and be in compliance with program regulations. Applicants developing new facilities must agree to comply with program operation and management conditions. LWCF developed sites must be deeded in perpetuity for outdoor recreation use.

It is recommended that applicants consult with Recreation Program staff for technical assistance prior to submitting an application.

FUNDING LEVELS

Minimum Request \$50,000 Maximum Request: \$500,000

Match Requirement: 50% Source: Cash/In-kind

Eligible In-Kind Contribution: Labor, Equipment, Materials

Disbursement Method: Reimbursement

FUND TITLE B. Recreational Trails Program (RTP)

GRANT CYCLE

Application information and deadline announced each year as funding is available.

ELIGIBILITY

Applicants: Units of local government, State Agencies, Federal Agencies. Entities with an open Recreational Trails Program (RTP) or Land and Water Conservation Fund (LWCF) grant are ineligible to apply; entities may not apply for both programs.

Applicants must maintain active registration with SAM and STAARS.

Activities: Construction of new recreational trails. Maintenance and restoration of existing recreational trails. Development and rehabilitation of trailside and trailhead facilities and trail linkages for recreational trails. Provision of features which facilitate the access and use of trails by persons with disabilities. Acquisition of easements and fee simple title to property for recreational trails or recreational trails corridors from willing sellers. Assessment of trail conditions for accessibility and maintenance. Development and dissemination of publications and operation of educational programs to promote safety and environmental protection related to recreational trails.

Requirements: It is recommended that applicants consult with Recreation Program staff for technical assistance prior to submitting an application.

FUNDING LEVELS

Maximum Request: 80% of total eligible project cost, up to \$200,000, single-use trails; \$400,000 non-motorized diverse-use; \$524,937 motorized, diverse-use trails; and \$87,489 for education projects. Amount available may vary with announcement.

Match Requirement: 20% Source: Cash/In-kind

Eligible In-Kind Contribution: Labor, Equipment, Materials

Disbursement Method: Reimbursement

CONTACT SPECIAL PROGRAMS UNIT

Trent Williams (334)353-3409
Special Programs Unit Chief
trent.williams@adeca.alabama.gov

PROGRAM A. HEALTHY FOOD FIANANCING

Tammy Perdew (334)353-3266
Program Manager
tammy.perdew@adeca.alabama.gov

GRANT CYCLE

Announcement opens typically in October 2023. For 2024: applications due February 1, 2024.

ELIGIBILITY

Applicants: Units of local government, For Profit or Non-Profit 501(c) (3) Organizations, other interested parties familiar with the existence of food deserts in their communities.

Activities: Pre-development costs, site acquisition, construction, equipment and furnishings, workforce training, energy efficiency, working capital for first time inventory and startup costs. Project must be for new grocery store, renovation or expansion of grocery stores, mobile grocery vans and delivery, installation of cold/freezer equipment in existing stores, food banks, farmers markets and other venues that will help to bring healthy foods to families in food desert areas.

Requirements: The financial feasibility and long-term sustainability of the project will drive the funding decision. Business plan, three years of financial statements and tax returns, personal financial statements, commitment for other sources of funds, articles of incorporation if applicable. Project must be in a low- or moderate-income area and must serve and underserved community.

Review the funding application for specific details.

FUNDING LEVELS

Maximum Request: \$50,000 (can vary with announcement)
Higher if project has significant reach and scope

Match Requirement: 50 % Source: Cash/In-kind

Eligible In-Kind Contribution: Labor, Equipment, Materials

Disbursement Method: Reimbursement

ALABAMA DEPARTMENT OF ENVIRONMENTAL MANAGEMENT (ADEM)

www.adem.al.state.us

CONTACT **SOLID WASTE DIVISION**

Rick Kelsey, Chief, Materials Management, Solid Waste Section (334)271-7770
rkelsey@adem.alabama.gov

PROGRAM **ALABAMA RECYCLING FUND (ARF)**

GRANT CYCLE

Applications typically due March, 1st. Announcements made in June.

ELIGIBILITY

Applicants: Local governments, authorities, K-12 Schools, and non-profit organizations. Applicants must maintain active registration with SAM and STAARS.

Activities: Balers, compactors, recycling trailers, recycling bins, collection trucks, roll-off containers, and other equipment to improve efficiency; education and outreach programs.

Requirements: Funds must be used to develop, implement, and enhance local recycling, reuse, and waste minimization projects and programs. All projects must be consistent with the current or planned recycling programs in the approved solid waste management plan of the appropriate local jurisdiction.

For additional information regarding the grant application and guidelines see:

<https://adem.alabama.gov/programs/land/recycling.cnt>

FUNDING LEVELS

Maximum Request: Set each year

Match Requirement: N/A

Source: N/A

Disbursement Method: Reimbursement

ALABAMA DEPARTMENT OF TRANSPORTATION

<http://www.dot.state.al.us>

CONTACT ALABAMA DEPARTMENT OF TRANSPORTATION

James F. Boyer, P.E. Assistant Bureau Chief, Operations (334)242-6619
boyerj@dot.state.al.us

PROGRAM INDUSTRIAL ACCESS ROAD AND BRIDGE CORPORATION

GRANT CYCLE

Applications must be filed with ALDOT at least 45 days prior to a meeting of the board of directors. Board meetings are scheduled on the second Tuesday of March, June and October. Application deadlines for 2023: April 7th, August 4th.

ELIGIBILITY

Applicants: Units of local government. Applicants must maintain active registration with SAM and STAARS.

Activities: Public access roads to new or expanding distribution, manufacturing and industrial firms. The new access must be on public right-of-way (state, city or county), must allow normal public use and must comply with standards for design and construction accompanying the use of state funds. The project sponsor (city or county) will assume maintenance responsibilities for the completed facility consistent with the use of state funds, unless the improvements occur on facilities currently maintained by the state.

Requirements: Industry must be committed to new investment and creation of new jobs. Notification Acknowledgement letter from the Secretary of Commerce must be included with application. Sponsor pays for preliminary engineering, utility relocation and right-of-way acquisition.

See <http://www.dot.state.al.us/adweb/Industrial%20Access.htm> for application form and program guidance.

FUNDING LEVELS

Maximum Request: N/A

Match Requirement: N/A

Disbursement Method: Reimbursement

CONTACT LOCAL TRANSPORTATION BUREAU

James F. Boyer, P.E. Assistant Bureau Chief, Operations (334)242-6619
boyerj@dot.state.al.us

PROGRAM REBUILD ALABAMA ACT GRANT PROGRAM

GRANT CYCLE:

Announced in Summer; due usually in late November.

ELIGIBILITY

Applicants: Any political subdivision of the State of Alabama (Municipal and County Governments) is eligible to apply for funding under the RAA Annual Grant program.

Activities: Improvements to any classified public road or bridge owned and maintained by the applicant that is open to public traffic.

Requirements: The RAA Annual Grant program funding is only available for eligible construction, construction engineering & inspection or materials testing activities. Sponsor pays preliminary engineering, right-of-way acquisition and utility relocation.

FUNDING LEVELS

Maximum Request: \$250,000

Match Requirement: N/A
Favorable consideration given

Source: Cash

Disbursement Method: Grant

CONTACT ALDOT MULTI-MODAL DIVISION

Leeann Williams (334)242-6020
williamsle@dot.state.al.us

PROGRAM TRANSPORTATION ALTERNATIVES PROGRAM (TAP)

GRANT CYCLE

Application announced each year.

ELIGIBILITY

Applicants: Units of local government. Applicants must maintain active registration with SAM and STAARS.

Activities: Construction of on-road and off-road facilities for pedestrian, cycling and non-motorized transportation (includes streetscaping of combined lighting, sidewalks and landscaping), infrastructure for safe routes; conversion of abandoned railroad corridors; construction of turnouts, overlooks; community improvement activities (removal of outdoor advertising, historic transportation facilities preservation and rehab, vegetation management and erosion control, archaeological activities); and environmental mitigation activities; construction engineering and inspection for infrastructure projects.

Requirements: Project must be for public use. Public involvement meeting required, plans must meet ALDOT Local Public Agency (LAP) Manual, environmental review and Davis Bacon reporting must be included. Sponsor pays preliminary engineering, right-of-way acquisition and utility relocation.

FUNDING LEVELS

Maximum Request: \$1,000,000

Match Requirement: 20% Source: Cash

Disbursement Method: Reimbursement

CONTACT **ALDOT ATRIP II PROGRAM** <https://www.dot.state.al.us/atrip2/>

Clay McBrien (334)242-6317
mcbrienc@dot.state.al.us

PROGRAM **ALABAMA TRANSPORTATION REHABILITATION and IMPROVEMENT PROGRAM - II (ATRIP II)**

GRANT CYCLE

Check the website for the FY24 availability and application announcement.

ELIGIBILITY

Applicants: Units of local government. Applications may be submitted jointly for projects of interest to more than one local government. Applicants must maintain active registration with SAM and STAARS.

Activities: Rehabilitate and improve transportation infrastructure by funding projects of local interest, proposed by one or more local governments, related to the state-maintained highway system. Projects may include local roads and bridges essential to such projects. The program's goal is to address critical needs projects across the state to rehabilitate and improve the in-place facilities and in some cases provide new facilities. The program's focus is an emphasis on the public safety, economic growth, and stability of the state and its roads and bridges.

Requirements: Review grant guidelines online. It is highly recommended that applicants coordinate with their respective ALDOT Region or Area office prior to finalizing an application. Any cost exceeding the maximum amount allowable per project will be the responsibility of the project sponsor.

FUNDING LEVELS

Maximum Request: \$2,000,000

Match Requirement: N/A Source: Cash

Disbursement Method: Reimbursement

ALABAMA HISTORICAL COMMISSION

<https://ahc.alabama.gov/>

CONTACT

Lisa D. Jones, Executive Director (334)230-2690
lisa.jones@ahc.alabama.gov

PROGRAM STATE HISTORIC PRESERVATION PROGRAMS

FUND TITLE

As Announced; the Preservation office may receive special one-time appropriations in any given year for different activities. It is recommended that interested applicants check the agency website for possible funding announcements.

GRANT CYCLE

As announced. Check website for details.

ELIGIBILITY

Applicants: Units of local government, school boards, Private educational institutions and Non-profits with 501 (c)(3) status, Colleges and Universities. Applicants must maintain active registration with SAM and STAARS.

Activities: Projects to preserve and maintain historic places and programs.

Requirements: See agency guidelines and seek assistance from a program manager prior to submitting an application.

FUNDING LEVELS See current agency guidelines for the information below.

Maximum Request:

Match Requirement:

Source:

Disbursement Method:

ALABAMA STATE COUNCIL ON THE ARTS

www.arts.alabama.gov

CONTACT

Elliott Knight, Executive Director,
Elliott.knight@arts.alabama.gov

(334)242-5145

PROGRAM See available programs and fund titles www.arts.alabama.gov

GRANT CYCLE

As announced for various programs.

ELIGIBILITY

Applicants: Units of local government, school boards, Private educational institutions and Non-profits with 501 (c)(3) status, Colleges and Universities.

Activities: Visual Arts, Arts Education, Performing Arts, Literary Arts, Community Arts, Cultural Facilities, Folklife projects.

Requirements: See agency guidelines and seek assistance from a program manager prior to submitting an application.

FUNDING LEVELS See current agency guidelines for the information below.

Maximum Request:

Match Requirement:

Source:

Disbursement Method:

AMERICA WALKS

www.americawalks.org

CONTACT On-line only:
<http://www.wm.com/about/community/charitable-giving.jsp>

PROGRAM **COMMUNITY CHANGE GRANTS -CHARITABLE GIVING**

GRANT CYCLE

If funding is available, applications usually are announced in the Fall. Awardees notified in December. The FY2023 Program is being revised. Check website for up-to-date information and announcements.

ELIGIBILITY

Applicants: Public bodies; Federally recognized Tribes; advocacy organizations classified as 501(c)(3) organizations or public organizations where any donations requested will be used exclusively for public purposes.

Activities: Projects related to creating healthy, active, and engaged places to live, work, and play. Check website for yearly grant program goals.

Requirements: Projects will create healthy, active, and engaged communities that support walking as transportation, health, and recreation and demonstrate increased physical activity. Projects must show a strong and intentional foundation of equity and authentic engagement of the whole community.

FUNDING LEVELS

Maximum Request: \$1,500

Match Requirement: N/A

Source: N/A

Disbursement Method: Reimbursement

APPALACHIAN REGIONAL COMMISSION (ARC)

www.arc.gov

CONTACT STATE ADMINISTERING AGENCY: Alabama Department of Economic and Community Affairs (ADECA)

Crystal Talley, Unit Chief
crystal.talley@adeca.alabama.gov

(334) 353-2630

PROGRAM FEDERAL INITIATIVES AND RECREATION DIVISION

GRANT CYCLE

FY24 to be announced.

ELIGIBILITY

Applicants: State and local units of governments, public bodies, and non-profit entities.
Eligible counties in West Alabama: Bibb, Fayette, Hale, Lamar, Pickens, and Tuscaloosa. Applicants must maintain active registration with SAM and STAARS.

Activities: Water and wastewater facilities, telecommunications, health care, planning activities, leadership development, education and training programs, business development, and entrepreneurship.

Requirements: Projects must advance one of ARC's investment goals - Economic Opportunities; Ready Workforce; Critical Infrastructure; Natural and Cultural Assets; and Leadership and Community Capacity.

FUNDING LEVELS

Maximum Request: \$200,000

Match Requirement: Source: Cash/In-kind
FY23 Distressed Counties (Hale) – 20%
FY23 At-risk Counties – 30% (Bibb, Fayette, Lamar, Pickens)
FY23 Transitional Counties – 50% (Tuscaloosa)
* Contact WARC for release of FY24 Match rates.

Eligible In-Kind Contribution: Labor, Equipment, Materials

Disbursement Method: Reimbursement

PROGRAM	ARC POWER
---------	-----------

Partnerships for Opportunity and Workforce and Economic Revitalization Initiative

www.arc.gov/arcs-power-initiative/

FUND TITLES	A. Technical Assistance grants
-------------	--------------------------------

B. Implementation grants

GRANT CYCLE

To be announced pending approval of federal allocation.

ELIGIBILITY

Applicants: State and local units of governments, public bodies, and non-profit entities.

Eligible counties in West Alabama: Bibb, Fayette, Hale, Lamar, Pickens, and Tuscaloosa. Applicants must maintain active registration with SAM and STAARS.

Activities: Support coal impacted communities; economic diversification, workforce development and re-employment, job creation. Broadband deployment projects.

Requirements: Achieve broad impact; bring together regional stakeholders and coalition partners.

FUNDING LEVELS

Maximum Request: Technical Assistance grants up to \$50,000 - \$100,000;
Implementation grants up to \$1.5 million

Match Requirement: Source: Cash/In-kind

FY23 Distressed Counties – 20% (Hale)

FY23 At-risk Counties – 30% (Bibb, Fayette, Lamar, Pickens)

FY23 Transitional Counties – 50% (Tuscaloosa)

* Contact WARC for release of FY24 Match rates.

Eligible In-Kind Contribution: Labor, Equipment, Materials

Disbursement Method: Reimbursement

DELTA REGIONAL AUTHORITY (DRA)

www.dra.gov

CONTACT **STATE ADMINISTERING AGENCY: ADECA**

Crystal Talley,
crystal.talley@adeca.alabama.gov

(334) 353-2630

PROGRAM **DRA STATE PROGRAM**

FUND TITLE **States' Economic Development Assistance Program (SEDAP)**

GRANT CYCLE

LDD hosts application workshop and announces application deadline.
Applications are submitted for LDD review 2 weeks prior to deadline, typically late spring.

ELIGIBILITY

Applicants: State and local units of governments, public bodies, and non-profit entities. Eligible counties in West Alabama: Greene, Hale and Pickens. These counties are considered Distressed Counties. Applicants must maintain active registration with SAM.

Activities: Projects focusing on creating jobs and eliminating poverty. Water and wastewater facilities, electric and gas utilities, broadband delivery, solid waste landfills, roadways, bridges, rail, port facilities, airports, business development, and workforce development.

Requirements: Projects eligible in Tier 1a: Create or retain jobs, have regional impact, leverage public and/or private funds; Tier 1b: meet imminent health or safety need; Tier 2: all other eligible projects.

FUNDING LEVELS

Maximum Request: \$500,000

Match Requirement: 10%

Source: Cash/In-kind

Note: Match can be waived in distressed counties (Greene, Hale, and Pickens)

Eligible In-Kind Contribution: Labor, Equipment, Materials

Disbursement Method: Reimbursement

ECONOMIC DEVELOPMENT ADMINISTRATION (EDA)

www.eda.gov

CONTACT STATE ECONOMIC DEVELOPMENT REPRESENTATIVE (EDR)

Lucas Blankenship (615)736-1423
lblankenship@eda.gov

PROGRAM ECONOMIC DEVELOPMENT ADMINISTRATION PROGRAMS

FUND TITLE

- A. Investments for Public Works and Economic Development Facilities**
- B. Economic Adjustment Assistance**

GRANT CYCLE

Applications are accepted on a continuous basis.

ELIGIBILITY

Applicants: Units of State and Local Governments, Public and State controlled institutions of Higher Education, federally recognized Native American tribal governments, others (see FFO). Applicants must maintain active registration with SAM.

Activities: Construction, Non-construction, Revolving loan funds, Technical Assistance projects.

Requirements: Project must commit to create or retain jobs and leverage private investment.

FUNDING LEVELS

Maximum Request: Based on average of \$10,000 per job

Match Requirement: Varies Source: Cash/In-kind

Eligible In-Kind Contribution: Labor, Equipment, Materials.

Disbursement Method: Reimbursement

ENVIRONMENTAL PROTECTION AGENCY (EPA)

www.epa.gov/brownfields

CONTACT

Cindy Nolan (404)562-8425/(404)217-0286
Nolan.Cindy@Epa.gov
EPA Region 4 Brownfield Contact

PROGRAM EPA BROWNFIELDS GRANT PROGRAMS

GRANT CYCLE

Check website for annual announcement. FY2023 closes February 14, 2023.

ELIGIBILITY

Applicants: Units of local government, council of governments, school districts, federally recognized Tribes, redevelopment authorities, qualified community development agency, non-profits established as 501(c)(3) organizations

Activities: EPA's Brownfields Program provides direct funding for brownfields assessment, cleanup, revolving loans, environmental job training, technical assistance, training, and research.

Requirements: Varies by program activity; see specific program announcement

LENDING LEVELS

Maximum Request: Varies by program activity

Match Requirement: Varies Source: Cash

Disbursement Method: Reimbursement

FEDERAL EMERGENCY MANAGEMENT AGENCY (FEMA)

www.fema.gov

CONTACT **STATE ADMINISTERING AGENCY: Alabama Emergency Management Agency (AEMA)**

Jeff Smitherman, Director, Alabama EMA
jeff.smitherman@ema.alabama.gov

(205) 280-2200

PROGRAM **HAZARD MITIGATION** <http://www.fema.gov/hazard-mitigation-assistance>

FUND TITLES **A. Hazard Mitigation Grant Program (HMGP)** assists in implementing long-term hazard mitigation measures following a major disaster.
B. Building Resilient Infrastructure & Communities (BRIC) provides funds for hazard mitigation planning and projects on an annual basis.
C. Flood Mitigation Assistance (FMA) provides funds for projects to reduce or eliminate risk of flood damage to buildings that are insured under the National Flood Insurance Program (NFIP) on an annual basis.
D. HMGP Post Fire Grant assists in mitigation measures after a wildfire disaster.

GRANT CYCLE

As announced for individual programs.

ELIGIBILITY

Applicants: States and units of local government.

Activities: As noted for individual programs.

Requirements: See online individual program information and/or most recent HMGP Unified Guidance.

FUNDING LEVELS

Maximum Request: \$ (may vary by program and announcement)

Match Requirement: 5% - 25% Source: Cash/In-kind

Eligible In-Kind Contribution: Labor, Equipment, Materials

Disbursement Method: Reimbursement

PROGRAM **U.S. FIRE ADMINISTRATION GRANTS**
www.fema.gov/welcome-assistance-firefighters-grant-program

CONTACT Region IV: Serving AL, FL, GA, KY, MS, NC, SC, TN

Vincent Ramm Regional Fire Program Specialist (229) 225-4965
vincent.rammsr@fema.dhs.gov

FUND TITLES **A. Assistance to Firefighters Grants (AFG)**
 B. Staffing for Adequate Fire and Emergency Response (SAFER)
 C. Fire Prevention and Safety (FP&S)
 D. Assistance to Firefighters COVID-19 Supplement

GRANT CYCLE

As announced for individual programs. Usually announced in January and due in February.

ELIGIBILITY

Applicants: States and units of local government; non-profits

Activities: As noted for individual programs.

Requirements: See online individual program information and/or most recent HMGP Unified Guidance.

FUNDING LEVELS

Maximum Request: \$ (may vary by program and announcement)

Match Requirement: 5% - 25% Source: Cash/In-kind

Eligible In-Kind Contribution: Labor, Equipment, Materials

Disbursement Method: Reimbursement

NATIONAL ASSOCIATION OF REALTORS

<https://realtorparty.realtor/community-outreach/smart-growth>

CONTACT

Hugh Morris (202)383-1278
hmorris@nar.realtor
SmartGrowthGrants@nar.realtor

PROGRAM **SMART GROWTH PROGRAM**

FUND TITLE **Placemaking Grant**

GRANT CYCLE

The 2023 applications will be available January 3, 2023 thru October 16, 2023. Check website for additional information.

ELIGIBILITY

Applicants: Only available to state and local Realtor Associations

Activities: The grant's goal is to transform underused or unused public spaces into vibrant gathering places accessible to everyone in a community.

Requirements: Must include project site (before) photo, budget, and concept plan. The project needs to be located outside (not inside a building), be a multi-functional space for everyone in the community such as dog parks and playgrounds, involve the participation of the association and engagement of Realtors, involve community partners and local "buy-in," compliant with city permitting and zoning, accessible to the whole community and all residents, accessible all or more of the time, and incorporates the "Power of Ten" (offers at least 10 things to do or reasons to be there).

FUNDING LEVELS

Minimum Request: N/A

Maximum Request: Level 1: \$3,000; Level 2: \$7,500
Level 3: \$15,000

Match Requirement: N/A

Source: N/A

Disbursement Method: Reimbursement

NATIONAL ENDOWMENT FOR THE HUMANITIES

www.neh.gov

CONTACT

NEH Office of Challenge Grants (202) 606-8309
challenge@neh.gov

PROGRAM Various
<https://www.neh.gov/grants>

FUND TITLE Various

GRANT CYCLE

Applications deadlines vary based on fund program.

ELIGIBILITY

Applicants: Small and mid-sized institutions that have never received an NEH grant as well as partnerships of organizations in rural areas. Eligible organizations include 501(c)(3) organizations, state and local government agencies, and federally recognized Indian tribal governments.

Activities: The program provides matching grants to help stimulate and proliferate meaningful humanities activities in states and US territories underserved by NEH's grantmaking divisions and offices.

Requirements: See specific program details.

FUNDING LEVELS

Maximum Request: Varies by program

Match Requirement: Varies Source:

Disbursement Method: Varies

PEOPLE FOR BIKES COMMUNITY GRANT PROGRAM

<http://www.peopleforbikes.org>

CONTACT

(303)449-4893
infor@peopleforbikes.org

PROGRAM **PEOPLE FOR BIKES COMMUNITY GRANT PROGRAM**

GRANT CYCLE

Grant Cycle is not open at this time. Program undergoing changes. Check the website for announcements.

ELIGIBILITY

Applicants: State and local units of governments, and non-profit entities in the United States.

Activities: Bike paths, lanes, trails, and bridges, Mountain bike facilities, Bike parks and pump tracks BMX facilities, End-of-trip facilities such as bike racks, bike parking, and bike storage. We also fund some advocacy projects, such as: Programs that transform city streets, initiatives designed to increase ridership or the investment in bicycle infrastructure, engineering and design work, construction costs including materials, labor, and equipment rental, and reasonable volunteer support costs. For advocacy projects, we will fund staffing that is directly related to accomplishing the goals of the initiative. Check the website for list of programs it DOES NOT FUND.

Requirements: On-line applications only. People For Bikes cannot be the sole or primary funder.

FUNDING LEVELS

Maximum Request: \$10,000

Match Requirement: Over 50% Source: Cash

Disbursement Method: Reimbursement

STATE FARM COMPANY GRANTS

www.statefarm.com

CONTACT

On-line only:

<https://www.statefarm.com/about-us/community/education-programs/grants-scholarships>

PROGRAM **GOOD NEIGHBOR CITIZENSHIP GRANTS**

FUND TITLES **A. Safety B. Community Development C. Education D. Service-Learning grants***

GRANT CYCLE

Grant applications are by invitation only. Please contact the Alabama State Farm Community Contact.

ELIGIBILITY

Applicants: Educational institutions, Government entities, 501(c)(3) charitable nonprofit organizations, 501(c)(4) volunteer fire companies, 501(c)(6) chambers of commerce in State Farm service areas.

Activities: A. Safety – Auto and roadway safety, teen driver education, home safety and fire prevention, disaster preparedness; B. Community Development – Affordable housing, job training, neighborhood revitalization, small business development, financial literacy; C. Education – Teacher development, service learning, education reform/systemic improvement; D. Service Learning – Environmental responsibility, health and wellness, arts and culture, safety and disaster preparedness. The application for this grant is temporarily closed.*

FUNDING LEVELS

Minimum Request: N/A

Maximum Request: N/A

Match Requirement: N/A

Source: N/A

Disbursement Method: Reimbursement

TOMBIGBEE RESOURCE, CONSERVATION, & DEVELOPMENT

www.tombigbeercd.com

CONTACT

Nneka Williams, Program Manager
nwilliams@tombigbeercd.org

(205)722-2498

PROGRAM **PROGRAM GRANTS**

FUND TITLE **A. General Fund Grant**

GRANT CYCLE

Grant applications for 2024 will be available April 1th through June 30th. Online application.

ELIGIBILITY

Applicants: Units of local government, school boards, Private educational institutions and Non-profits with 501 (c)(3) status.

Activities: Wide range of community and economic development enhancements. Projects may include construction, programs, and services. Ineligible activities include: capital assets, operational phases of established programs, endowment campaigns, religious organizations for religious purposes, individuals working independently, post-event or after the fact situations, and land purchases.

Requirements: Project must benefit the public and improve the general quality of life in the district. Awards are intended to be seed grants and/or have multiple funding partners.

FUNDING LEVELS

Minimum Request \$5,000

Maximum Request: \$10,000

Match Requirement: N/A

Source: N/A

Disbursement Method: Reimbursement

FUND TITLE **B. Educational Grant**

GRANT CYCLE

Grant applications for 2024 will be available April 1st through June 30th. Online application

ELIGIBILITY

Applicants: Units of local government, school boards, Private educational institutions and Non-profits with 501 (c)(3) status.

Activities: Educational programs and improvements. Projects may include programs, services and construction related to an educational component. Ineligible activities include: capital assets, operational phases of established programs, endowment campaigns, religious organizations for religious purposes, individuals working independently, post-event or after the fact situations, and land purchases.

Requirements: Project must benefit the public and improve the general quality of life in the district. Awards are intended to be seed grants and/or have multiple funding partners.

FUNDING LEVELS

Minimum Request \$5,000

Maximum Request: \$10,000

Match Requirement: N/A

Source: N/A

Disbursement Method: Reimbursement

UNITED STATES DEPARTMENT OF JUSTICE

<https://www.justice.gov/grants>

CONTACT

Office Response Center 800-421-6770
AskCopsRC@usdoj.gov

PROGRAM **COMMUNITY ORIENTED POLICING SERVICES (COPS)**

GRANT CYCLE

Applications for 2024 to be announced.

ELIGIBILITY

Applicants: All state, local, and tribal law enforcement agencies that have primary law enforcement are eligible to apply.

Activities: Address the full-time sworn officer needs of state, local, and tribal law enforcement agencies to increase community policing capacity and crime prevention efforts. Funds the number of officer positions equal to 5% of your actual sworn force strength (up to a maximum of 15 officers for agencies with a service population of less than 1 million. The program provides 75 percent funding for approved entry-level salaries and fringe benefits of newly hired and/or rehired full-time sworn career law enforcement officers over three years up to a maximum of \$125,000 per officer position.

Requirements: Grant recipients must plan to retain each officer position awarded for at least one year. Grant funds may not replace state or local funds committed for hiring officers. Grant funds must be used to increase the amount of officer hiring funds that would, in the absence of Federal funds, be available from state or local sources.

FUNDING LEVELS

Maximum Request: Up to \$125,000 per officer position over the three-year grant period

Match Requirement: 25% Source: Cash

Disbursement Method: Reimbursement

USDA AGRICULTURAL MARKETING SERVICE

www.ams.usda.gov

CONTACT

Jeff O'Hara, Agricultural Marketing Specialist (202) 756-2575

JeffreyK.Ohara@usda.gov

USDAFMPPquestions@ams.usda.gov

PROGRAM **FARMERS MARKET PROMOTION PROGRAM (FMPP)**

GRANT CYCLE

Application usually announced in March/April and due in April/May.

ELIGIBILITY

Applicants: Agricultural businesses and cooperatives, local governments, nonprofit corporations, producer networks, public benefit corporations, regional farmers' market authorities, Tribal governments, Community Supported Agricultural (CSA) networks, CSA associations, and economic development corporations.

Activities: The purpose is to increase domestic consumption of and access to locally and regionally produced agricultural products and to develop new market opportunities for farm and ranch operations serving local markets by developing, improving, expanding, and providing outreach, training, and technical assistance to domestic farmers markets, roadside stands, community-supported agriculture programs, agritourism activities, and other direct producer-to-consumer market opportunities (including direct producer-to-retail, direct producer-to-restaurant and direct producer-to-institutional marketing).

Requirements: Applicants must submit a project narrative and signed letters of commitment from partner and collaborator organizations. Applicants must be active with SAM.

FUNDING LEVELS

Minimum Request: \$50,000

Maximum Request: \$500,000

Match Requirement: 25%

Source: Cash

Disbursement Method: Reimbursement

PROGRAM **LOCAL FOOD PROMOTION PROGRAM (LFPP)**

FUND TITLE **A. LFPP Planning Grant**

GRANT CYCLE

Application usually announced in March/April and due in April/May.

ELIGIBILITY

Applicants: Agricultural businesses and cooperatives, local governments, nonprofit and public benefit corporations, regional farmers' market authorities, Community Supported Agricultural networks and associations, other agricultural business entities (for-profit groups), and economic development corporations.

Activities: Projects that develop, coordinate and expand local and regional food business enterprises that engage as intermediaries in indirect producer to consumer marketing to help increase access to and availability of locally and regionally produced agricultural products. Grants can be used for the planning stages of establishing or expanding a local and regional food business enterprise or to improve or expand a food business that supports locally and regionally produced agricultural products and food system infrastructure by performing feasibility studies, market research, training and technical assistance for the business enterprise and/or for producers working with the business enterprise.

Priority consideration will be given to projects that benefit communities located in areas of concentrated poverty with limited access to supermarkets, are implemented in and support agribusiness located in rural areas or towns that have populations of 50,000 or less, or involve Promise Zone Lead Application Organizations.

Requirements: Applicants must submit a project narrative, signed letter verifying matching funds for each cash and/or in-kind resource, and signed letters of commitment from partner and collaborator organizations. Applicants must be active with SAM.

FUNDING LEVELS

Minimum Request: \$25,000

Maximum Request: \$100,000

Match Requirement: 25%

Source: Cash/In-kind

Disbursement Method: Reimbursement

FUND TITLE **B. LFPP Implementation Grant**

GRANT CYCLE

Application usually announced in March/April and due in April/May.

ELIGIBILITY

Applications: Entities that are eligible to apply are agricultural businesses and cooperatives, local governments, nonprofit and public benefit corporations, regional farmers' market authorities, Community Supported Agricultural networks and associations, other agricultural business entities (for-profit groups), and economic development corporations.

Activities: Projects that develop, coordinate and expand local and regional food business enterprises that engage as intermediaries in indirect producer to consumer marketing to help increase access to and availability of locally and regionally produced agricultural products. Grants can be used for the planning stages of establishing or expanding a local and regional food business enterprise or to improve or expand a food business that supports locally and regionally produced agricultural products and food system infrastructure by performing feasibility studies, market research, training and technical assistance for the business enterprise and/or for producers working with the business enterprise.

Priority consideration will be given to projects that benefit communities located in areas of concentrated poverty with limited access to supermarkets, are implemented in and support agribusiness located in rural areas or towns that have populations of 50,000 or less, or involve Promise Zone Lead Application Organizations.

Requirements: Applicants must submit a project narrative, signed letter verifying matching funds for each cash and/or in-kind resource, and signed letters of commitment from partner and collaborator organizations. Applicants must be active with SAM. See website for more detailed information.

FUNDING LEVELS

Minimum Request: \$100,000

Maximum Request: \$500,000

Match Requirement: 25%

Source: Cash/In-kind

Disbursement Method: Reimbursement

USDA NATIONAL INSTITUTE OF FOOD AND AGRICULTURE

www.nifa.usda.gov

CONTACT

Jaheon Koo, PhD, Program Specialist (816)926-1179

PROGRAM **Community Food Projects (CFP) Competitive Grants**

GRANT CYCLE

FY21 Grants are due May 2, 2021. Applications are taken on an annual basis through a Notice of Funding Availability (NOFA) in the Federal Register www.federalregister.gov. Check www.nifa.usda.gov for more details.

ELIGIBILITY

Applicants: Non-profit entities, Public food program service providers, Tribal organizations.

Activities:

- a. The Community Food Projects (CFP) – supports the development of projects with a one-time infusion of federal dollars to make such projects self-sustaining. CFPs are designed to create community-based food projects with objectives, activities and outcomes that are in alignment with the program’s primary goals (check the website for details).
- b. The Planning Project (PP) supports completing a plan toward the improvement of community food security in keeping with the program’s primary goals (check the website for details). PPs are to focus on the defined community and describe in detail the activities and outcomes of the planning project.

Requirements: All projects must involve low-income participants. Project partners and collaborators are strongly encouraged. Must follow the submission requirements available upon publication of the RFP and stated in the “NIFA Grants.gov Application Guide.” Applicants must maintain active registration with SAM. Additional criteria listed on the grant website.

FUNDING LEVELS

Maximum Request:

CFP - \$35,000 to \$125,000 for single year projects, or, \$400,000 for project over four years

PP - Not to exceed \$35,000 for the total project period

Match Requirement: 50%

Source: Cash (non-federal dollars)/In-Kind

Disbursement Method: Reimbursement

USDA RURAL DEVELOPMENT

www.rd.usda.gov/al

CONTACT TUSCALOOSA AREA OFFICE

Teresa Long, Area Director (205) 553-1733 Ext. 5
teresa.long@usda.gov

PROGRAM COMMUNITY FACILITIES PROGRAMS

FUND TITLE **A. Economic Impact Initiative Grant**
www.rd.usda.gov/programs-services/economic-impact-initiative-grants

GRANT CYCLE

Applications are taken on a rolling basis. Check with the local Rural Development USDA office for more details.

ELIGIBILITY

Applicants: Public bodies, Non-profit entities, Federally-recognized Tribes.

Activities: Development of essential community facilities in rural communities with extreme unemployment and severe economic depression. Examples of essential community facilities include: 1) Health Care: hospitals, medical clinics, dental clinics, nursing homes, assisted-living facilities; 2) Public Facilities: city/town/village halls, courthouses, airport hangers, street improvements; 3) Community Support Services: child care centers, community centers, fairgrounds, transitional housing; 4) Public Safety: fire halls, police stations, prisons, jails, police vehicles, fire trucks, public works vehicles and equipment; 5) Educational: museums, libraries, private schools; 6) Utility: telemedicine, distance learning; 6) Local Food Systems: community gardens, food pantries, community kitchens, food banks, food hubs, greenhouses, kitchen appliances. For a complete list, see Code of Federal Regulations (CFR) 3570.7

Requirements: Applicants must maintain active registration with SAM. Applicants must be unable to finance the project from their own resources and/or through commercial credit at reasonable rates and terms.

FUNDING LEVELS

Maximum Request: 75% of eligible project costs

Match Requirement: 25 % Source: Cash

Disbursement Method: Reimbursement

PROGRAM **COMMUNITY DEVELOPMENT**

FUND TITLE **B. Rural Community Development Initiative Grants**

GRANT CYCLE

Applications are taken on an annual basis through a Notice of Funding Availability (NOFA) in the Federal Register www.federalregister.gov. Check www.rd.usda.gov for more details.

ELIGIBILITY

Applicants: Public Bodies, Non-profit organizations, and federally recognized Native American tribal groups in rural areas or towns outside the urbanized periphery of any city with a population of 50,000 or more. Applicants must maintain active registration with SAM.

Activities: This program provides funding to help non-profit housing and community development organizations support housing, community facilities, and community and economic development projects in rural areas. Community economic development, Technology-based economic development, Feasibility studies and business plans, Leadership and entrepreneur training, Rural business incubators, Long-term business strategic planning.

Requirements: Demonstrate job creation to occur with local businesses; Percent of nonfederal funding committed to the project; Economic need in the area to be served; Consistency with local economic development priorities; Experience of the grantee with similar efforts; and other factors described in the current Notice of Solicitation of Applications (NOSA), if one is published.

Partnerships with other federal, state, local, private, and non-profit entities are encouraged.

FUNDING LEVELS

Minimum Request: \$50,000; Maximum Request: \$250,000

Match Requirement: 50% Source: Cash

Disbursement Method: Reimbursement

PROGRAM **WATER AND ENVIRONMENTAL PROGRAMS**

FUND TITLE **A. Water & Waste Water Disposal Pre-development Planning Grants**

GRANT CYCLE

Applications are taken on a continuous basis.

ELIGIBILITY

Applicants: Most state and local governmental entities, Non-profit Corporations.

Activities: Pay for part of costs to develop a complete application for USDA Rural Development Water & Wastewater Disposal direct loan/grant or loan guarantee.

Requirements: Applicants must maintain active registration with SAM. Applicants must be unable to finance the project from their own resources and/or through commercial credit at reasonable rates and terms.

FUNDING LEVELS

Maximum Request: Up to 75% not to exceed \$30,000

Match Requirement: 25% Source: Cash

Disbursement Method: Reimbursement

FUND TITLE **B. Special Evaluation Assistance for Rural Communities and Households (SEARCH)**

LENDING/GRANT CYCLE

Applications are taken on a continuous basis.

ELIGIBILITY

Applicants: Most state and local governmental entities, non-profit organizations in financially distressed rural areas with a population of 2,500 or less.

Activities: Predevelopment planning costs, including feasibility studies to support applications for funding of water or waste disposal projects; preliminary design and engineering analysis; and technical assistance for the development of an application for financial assistance.

Requirements: Eligible grant purposes must be related to a proposed project that meets the following requirements: construct, enlarge, extend, or otherwise improve rural water, sanitary sewage, solid waste disposal, and storm wastewater disposal facilities; to construct or relocate public buildings, roads, bridges, fences, or utilities, and to make other public improvements necessary for the successful operation or protection of facilities; and to relocate private buildings, roads, bridges, fences, or utilities and other private improvements necessary for the successful operation or protection of facilities.

LENDING LEVELS

Maximum Request: N/A

Match Requirement: N/A Source: N/A

Disbursement Method: Reimbursement

PROGRAM **RURAL BUSINESS DEVELOPMENT PROGRAMS**

FUND TITLE **A. Enterprise Projects**

GRANT CYCLE

Applications are taken on a continuous basis.

ELIGIBILITY

Towns, Communities, State agencies, Authorities, Non-profit Corporations, Institutes of Higher Education, Rural Cooperatives, and federally recognized Native American tribal groups in rural areas or towns outside the urbanized periphery of any city with a population of 50,000 or more. Applicants must maintain active registration with SAM.

Activities: Purchase and develop land, establish a revolving loan fund, construct buildings, plants, equipment, access streets and roads, parking areas, utility and service extensions, pollution control and abatement, leadership and entrepreneur training, technical assistance, feasibility studies and business plans, rural business incubators, distance learning, community economic development.

Requirements: Demonstrate job creation to occur with local businesses; Percent of nonfederal funding committed to the project; Economic need in the area to be served; Consistency with local economic development priorities; Experience of the grantee with similar efforts; and other factors described in the current Notice of Solicitation of Applications (NOSA), if one is published.

FUNDING LEVELS

Maximum Request: None, generally range from \$10,000 up to \$500,000.
Smaller requests are given higher priority.

Match Requirement: N/A Source: Cash or In-Kind
Favorable consideration given

Disbursement Method: Reimbursement

FUND TITLE **B. Opportunity Projects**

GRANT CYCLE

Applications are taken on a continuous basis under Rural Business Development Grant

ELIGIBILITY

Applicants: Towns, Communities, State agencies, Authorities, Non-profit Corporations, Institutes of Higher Education, Rural Cooperatives, and federally recognized Native American tribal groups in rural areas or towns outside the urbanized periphery of any city with a population of 50,000 or more. Applicants must maintain active registration with SAM.

Activities: Community economic development, Technology-based economic development, Feasibility studies and business plans, Leadership and entrepreneur training, Rural business incubators, Long-term business strategic planning.

Requirements: Demonstrate job creation to occur with local businesses; Percent of nonfederal funding committed to the project; Economic need in the area to be served; Consistency with local economic development priorities; Experience of the grantee with similar efforts; and other factors described in the current Notice of Solicitation of Applications (NOSA), if one is published.

FUNDING LEVELS

Maximum Request: N/A; however, opportunity grants are limited to up to 10% of the total Rural Business Development Grant annual funding.

Match Requirement: N/A
Favorable consideration given

Source: Cash or in-Kind

Disbursement Method: Grant

WASTE MANAGEMENT

www.wm.com

CONTACT

On-line only:

<http://www.wm.com/about/community/charitable-giving.jsp>

PROGRAM **CHARITABLE GIVING**

FUND TITLE **General Fund Grant**

GRANT CYCLE

Applications are accepted on a continuous basis. There is an estimated two-month review period.

ELIGIBILITY

Applicants: Organizations that are duly certified by the state in which they operate and are in receipt of an IRS ruling that they are classified as a 501(c)(3) organization or public organizations where any donations requested will be used exclusively for public purposes. WM prefers not to financially support operating costs, capital campaigns, or multi-year requests. Preference is also given to organizations, which have a broad base of funders, community partners and volunteers.

Activities: The programs that Waste Management is most motivated to support impact the environment, provide environmental education, and are causes important to the areas where they operate. Activities on the environment include reducing dependence on fossil fuels; conserving/maintaining wetlands, wildlife habitats, and green space for people's enjoyment; and preserving and/or enhancing natural resources. Activities on environmental education include environmental and science related projects, science fairs, Earth Day projects, and others. Preference is given to education programs targeted at middle and high school students.

FUNDING LEVELS

Minimum Request N/A

Maximum Request: N/A

Match Requirement: N/A

Source: N/A

Disbursement Method: Reimbursement

III. LOAN PROGRAMS

ALABAMA DEPARTMENT OF ECONOMIC AND COMMUNITY AFFAIRS (ADECA)

www.adeca.alabama.gov

CONTACT - COMMUNITY AND ECONOMIC DEVELOPMENT (CED Division)

Kathleen Rasmussen, PhD, CED Division Chief
kathleen.rasmussen@adeca.alabama.gov

(334) 353-0323

PROGRAM COMMUNITY DEVELOPMENT BLOCK GRANT (CDBG) ECONOMIC DEVELOPMENT FUND

FUND TITLE A. Economic Development Loans

LENDING CYCLE

Applications are accepted on a continuous basis. Award upon approval and as funding is available.
Application workshop held in late Spring with compliance workshop held in the Fall.

ELIGIBILITY

Applicants: Non-entitlement units of local government.

Activities: Land, building, site improvements, facility construction or renovations, operating capital, administration, or any CDBG-eligible activity.

Requirements: Benefit at least 51% low and moderate-income beneficiaries.
Project must commit to create or retain permanent jobs.

See current program year thresholds.

LENDING LEVELS

Minimum Request: \$50,000

Maximum Request: \$500,000 or as determined by ADECA
Director

Rate:

Disbursement Method: Loan

Term:

FUND TITLE **B. Economic Development Float Loans**

LENDING CYCLE

Applications are accepted on a continuous basis. Award upon approval and as funding is available.
Application workshop held in late Spring with compliance workshop held in the Fall.

ELIGIBILITY

Applicants: Units of local government.

Activities: Acquisition, site preparation, facility construction or renovations, operating capital, machinery and equipment, refinancing, or any CDBG-eligible activity.

Requirements: Benefit at least 51% low and moderate-income beneficiaries.
Project must commit to create or retain permanent jobs.

See current program year thresholds.

LENDING LEVELS

Minimum Request: \$1,000,000

Maximum Request: \$10,000,000

Rate:

Disbursement Method: Loan

Term: One year with optional one-year extension

FUND TITLE **C. Section 108 Loan Guarantees**

LENDING CYCLE

Applications are accepted on a continuous basis. Award upon approval and as funding is available.
Application workshop held in late Spring with compliance workshop held in the Fall.

ELIGIBILITY

Applicants: Non-entitlement units of local government.

Activities: Economic development activities.

Requirements: Benefit at least 51% low and moderate-income beneficiaries.
Project must commit to create or retain permanent jobs.

See current program year thresholds.

LENDING LEVELS

Maximum Request: \$10,000,000 with waiver provision

Rate:

Disbursement Method: Loan guarantee

Term:

ALABAMA DEPARTMENT OF ENVIRONMENTAL MANAGEMENT (ADEM)

www.adem.alabama.gov

CONTACT

Eric Reidy, Chief, SRF Program (334)271-7805
eric.reidy@adem.alabama.gov

PROGRAM STATE REVOLVING FUND (SRF)

FUND TITLE A. Clean Water State Revolving Fund (CWSRF) B. Drinking Water State Revolving Fund (DWSRF)

*****NOTE: The State has allocated additional funds for SRF Clean Water and Drinking Water projects from the American Recovery Program Act (ARPA) and the Bipartisan Infrastructure Law (BIL). APPLY NOW.***

LENDING CYCLE

Pre-applications are taken on a rolling basis. Principle forgiveness submit by March 1st.

ELIGIBILITY

Applicants: Units of local government, water boards and authorities. Contact ADEM for Principal Forgiveness eligibility for disadvantaged systems.

Activities: Engineering, inspection and construction costs, water or wastewater treatment works (existing systems only), sewer rehabilitation, drinking water storage facilities, rehabilitation or new construction of water source wells, transmission/distribution mains, green infrastructure, nonpoint source, water conservation/reuse, and agricultural runoff projects. Drinking water projects primarily intended to serve future growth are not eligible.

Requirements: Facilities must be publicly owned. Applicant must show ability to repay the loan and meet other specified standards. Public Water Systems must submit the appropriate forms for preapplication. Project must comply with Davis Bacon and the Buy American Act.

LENDING LEVELS

Minimum Request: N/A Maximum Request: N/A

Rate: Fixed rate, typically 1.5% -2.0% less than the municipal bond rate

Disbursement Method: Loan

Term: 20 years

ALABAMA LEAGUE OF MUNICIPALITIES (ALM)

<http://www.almonline.org>

CONTACT

Greg Cochran (334)386-8170
gregc@alalm.org

PROGRAM **AMFUND LOAN**
<http://www.amfund.com/>

LENDING CYCLE

Applications are accepted on a continuous basis.

ELIGIBILITY

Applicants: Any authorized representative of an Alabama municipality.

Activities: Debt refinancing, infrastructure, fire and police vehicles, sanitation equipment, capital improvement projects, equipment leasing, city halls, local match for grant, and refinancing/debt consolidation.

Requirements: Last three years' financial statements.

LENDING LEVELS

Minimum Request: \$150,000

Maximum Request: Based on Municipal debt limit

Rate:

Disbursement Method: Loan

Term: Up to 30 years

ALABAMA RURAL WATER ASSOCIATION (ARWA)

<http://www.alruralwater.com>

CONTACT

Robert White, IV, Executive Director (334)396-5511
rwhite@alruralwater.com

PROGRAM **ARWA REVOLVING LOAN FUND**

LENDING CYCLE

Applications are accepted on a continuous basis. Approval as funding is available.
Applications may be submitted on-line at:
http://alruralwater.com/WEB/services/files/ARWA_RLF_Online_App_Fillable_1511.pdf

Download the form [Revolving Fund Loan Application](#)

ELIGIBILITY

Applicants: Municipalities, authorities, non-profit corporations and cooperatives with up to 25,000 population for incorporated areas, no limit for unincorporated areas.

Activities: Equipment and small capital improvement projects, local match for grants.

Requirements: Promissory note or equivalent authorized by the governing body. Most recent annual audit or year-end financial statement, names of officers including addresses, contact numbers and terms of office. Borrower is responsible for closing costs and is required to pay a one-time processing fee of 1.5% of the loan amount.

LENDING LEVELS

Maximum Request: 75% of total project cost up to \$150,000

Rate: Based on current USDA Rural Utility Service quarterly interest rate. Rates are fixed for the life of the loan. Minimum interest rate 3%. Can fluctuate quarterly according to USDA quarterly rates

Disbursement Method: Loan

Term: Repayment period is flexible depending on the project

ALABAMA TRANSPORTATION INFRASTRUCTURE BANK (ATIB)

<http://www.dot.state.al.us/programs/ATIB.html>

CONTACT

Jeff Hornsby, CFO (334)242-6359
hornsbye@dot.statelal.us

PROGRAM **ALABAMA TRANSPORTATION INFRASTRUCTURE BANK (ATIB) LOAN GUARANTEE**

LENDING CYCLE

Applications are accepted on a continuous basis.

ELIGIBILITY

Applicants: State and local governments

Activities: Public roads and bridges; funding purposed for construction, reconstruction, maintenance, and improvement of roads, bridges, local streets, and other public ways including right of way acquisition, feasibility, and engineering costs.

Requirements: Streamline borrowing option for various local projects or joint local/state projects. Funding can be provided within 90 days of receipt of an application. Borrowers only responsible for individual loan repayments. Borrowers have three years to spend loan proceeds for projects.

LENDING LEVELS

Minimum Request: \$5,000,000

Maximum Request: N/A

Disbursement Method: Loan Guarantee

Rate: N/A

Term: 40 years

COMMUNITIES UNLIMITED / RCAP

<http://www.CommunitiesU.org>

CONTACT

Bryn Bagwell (479)443-2700

bryn.bagwell@communitiesu.org

PROGRAM **WATER/WASTEWATER LOANS**

LENDING CYCLE

Applications are accepted on a continuous basis.

ELIGIBILITY

Applicants: Nonprofit corporations, local governments, and federally recognized Tribal Nations who serve a significant number of low-income customers, are in qualifying rural communities, can repay the loan with system revenues, and can provide evidence of permanent take-out financing.

Activities: Pre-development expenses, interim financing, construction loans, system improvements, equipment loans. The loans can be used to meet compliance for public drinking water and wastewater regulations, improve public health and system security, extend service to new customers, create opportunities for economic development, and conduct pre-development activities that allow systems to qualify for longer-term financing.

Requirements: Last 2 year's annual audits, budget for current year, insurance policies and confirmations, resolution or extract of the minutes authorizing the submission of this application, details of grant or loan applications pending if applicable, description of any pending litigation if applicable, Engineering Report or other documents describing project, current Regulatory and Enforcement Order if applicable.

Emergency Financing: In the event of a natural disaster or catastrophic system failure, emergency loans can be processed within 1 – 3 business days.

LENDING LEVELS

Minimum Request: N/A

Maximum Request: \$750,000

Disbursement Method: Loan

Rate: 7%

Term: 15 years

PROGRAM COMMUNITY FACILITIES LOANS

LENDING CYCLE

Applications are accepted on a continuous basis.

ELIGIBILITY

Applicants: Local government entities, nonprofit corporations, public bodies, and federally recognized tribes may borrow if they serve a significant number of low-income customers, serve rural communities of less than 20,000, have demonstrated cash flow for debt service or provide evidence for permanent take-out financing, and are willing to accept no-cost technical assistance if it will improve the organization's ability to repay the loan.

Activities: Construct or improve essential facilities. Examples include local food systems such as a community garden and food pantries, public health and safety services such as fire departments and waste management, public facilities such as town halls and courthouses, community support services such as child care centers and community centers, distance learning such as telemedicine or distance learning equipment, and healthcare facilities such as medical clinics and assisted living facilities.

Requirements: Last 2 year's annual audits, budget for current year, insurance policies and confirmations, resolution or extract of the minutes authorizing the submission of this application, details of grant or loan applications pending if applicable, description of any pending litigation if applicable, Engineering Report or other documents describing project, current Regulatory and Enforcement Order if applicable.

LENDING LEVELS

Minimum Request: N/A

Maximum Request: Varies by customer

Disbursement: Loan

Rate: Please call for current interest rates

Term: 15 years

ENVIRONMENTAL PROTECTION AGENCY (EPA)

www.epa.gov

CONTACT

EPA REGION 4

Mary Walker (404)562-9469
Walker.mary@Epa.gov

PROGRAM

WATER INFRASTRUCTURE AND FINANCE INNOVATION ACT (WIFIA)

WIFIA@epa.gov

LENDING CYCLE

Pending 2021-2022 announcement.

ELIGIBILITY

Applicants: Units of local, state, tribal and federal governments, partnerships and joint ventures, corporations and trusts, Clean Water and Safe Drinking water State Revolving Fund (SRF) programs are eligible for the program.

Activities: Drinking water or wastewater treatment and facilities, property acquisition if integral to activity, alternate water supply, aquifer recharge and water recycling. Drought prevention, reduction, or mitigation projects. Acquisition of property if it is integral to the project or will mitigate the environmental impact of a project. Awards made for projects of regional or national significance.

Requirements: Applicant must show ability to repay the loan and credit-worthy. Project must comply with Davis Bacon, American Iron and Steel, and all federal crosscutter provisions apply.

LENDING LEVELS

Maximum Request: 49% of costs

Minimum Request: \$5 million (population 25,000 or less);
\$20 million for large communities.

Disbursement Method: Loan with customized repayment schedules

Rate: Equal or greater to the U.S. Treasury rate of a similar maturity

Term: 35 years

USDA RURAL DEVELOPMENT

www.rd.usda.gov

CONTACT TUSCALOOSA AREA OFFICE

Teresa Long, Area Director (205) 553-1733 ext. 5
teresa.long@al.usda.gov

PROGRAM COMMUNITY FACILITIES PROGRAMS

FUND TITLE Community Facilities Direct Loan and Grant

LENDING/GRANT CYCLE

Applications are taken on a continuous basis.

ELIGIBILITY

Applicants: Public bodies and non-profit organizations in rural areas and incorporated areas with population of 20,000 or less.

Activities: Construct, enlarge, or improve community facilities for health care, public safety, educational services, utility services, local food systems, and community support and public services. This can include the purchase of equipment required for a facility's operation.

Requirements: Projects must provide essential community facilities for rural communities. Applicant must be unable to obtain the financing from other sources at affordable rates and terms. Funding is provided through a competitive process.

LENDING LEVELS

Maximum Request: Calculated median household income, financial status of entity, and outstanding indebtedness.

Match Requirement: Minimum of 25% Source: Cash/In-Kind

Eligible In-Kind Contribution: Labor, Equipment, Materials

Rate:

Disbursement Method: Low interest Direct Loan, Loan Guarantee, or Grant combination.

Term: Maximum of 40 years

PROGRAM **WATER AND ENVIRONMENTAL PROGRAMS**

FUND TITLE **Water and Waste Disposal Loan and Grant**

LENDING/GRANT CYCLE

Applications are taken on a continuous basis.

ELIGIBILITY

Applicants: Public entities and non-profit corporations in rural areas, cities or towns with up to 10,000 in population.

Activities: Build, repair and improve public water systems, waste collection and treatment systems, and other related costs.

Requirements: Applicant must be unable to obtain the financing from other sources at affordable rates and terms. Partnerships are encouraged.

LENDING LEVELS

Maximum Request: Calculated on similar systems' rates, median household income, financial status of the system, and outstanding indebtedness.

Disbursement Method: Direct Loan or Grant combination

Rate: Interest rate based on the useful life of the facilities to be financed

Term: Maximum of 40 years

UNITED BANK

<https://ubcommunitydevelopment.com/>

CONTACT **United Bank**

Mike Diehl (850)206-5321
mike.diehl@unitedbank.com

PROGRAM **COMMUNITY FACILITIES LENDING PROGRAMS**

FUND TITLE **Community Facilities Lending**

LENDING/GRANT CYCLE

Applications are taken on a continuous basis.

ELIGIBILITY

Applicants: Eligible borrowers for Community Facilities Lending Program include: Public bodies such as counties, cities, special purpose districts such as fire protection district; Non-profit corporations with significant ties to the community; Indian tribes on Federal and State reservations and other federally recognized tribes. Rural areas including cities, villages and townships including Federally Recognized Tribal Lands with no more than 20,000 residents according to the latest U.S. Census Data.

Activities: Purchase, construct, and/or improve essential community facilities, purchase equipment and pay related project expenses. Examples of essential community facilities: Healthcare facilities such as hospitals, medical clinics, dental clinics, nursing homes, or assisted living facilities; Public facilities such as town halls, courthouses, libraries or domestic violence centers; Infrastructure such as street improvements or bridges; Community support services such as child care centers, community centers, fairgrounds or transitional housing; Public safety services such as fire and rescue facilities such as fire stations and fire trucks, ambulance stations and ambulances, prisons, public works vehicles or equipment; Educational services such as museums, libraries, colleges, and public, charter or private schools

Requirements: UB Community Development's initiatives are directed to improve the social and economic conditions in our communities. Our lending options include Community Facilities Lending <https://ubcommunitydevelopment.com/community-facilities-lending-program/>.

LENDING LEVELS

Minimum Request: N/A

Maximum Request: Varies by customer

Disbursement: Loan

Rate: Check with United Bank

Term: Varies

IV. FOUNDATION RESOURCES

Foundation Resources

Organization Name	Contact	Address	City, State	Telephone	Web	Email	Issues	Smallest Grant*	Largest Grant*	Notes
Alabama Microenterprise Network	Gaynelle Adams Jackson, President	P.O. Box 1882	Birmingham, Alabama 35201		microenterprisealabama.org	gjackson@microenterprisealabama.org	Small Business			Promotes, educates and advocates for small (micro) business through networking.
Alabama Power Foundation	Tequila Smith, President	600 North 18th Street	Birmingham, AL 35291	205-257-2424	powerofgood.com		Broad-based	\$ 100	\$ 1,556,000	Broad-based grant-making foundation for community causes.
Alabama Sustainable Agriculture Network	Alice Evans, Executive Director	P.O. Box 2533	Birmingham, Alabama 35202	256-743-0742	asanonline.org	alice@asanonline.org	Human Services; Agriculture			Networking in support of sustainable agriculture.
Black Belt Community Foundation	Chris Spencer, Chief Engagement Officer	609 Lauderdale St.	Salma, Alabama	334-874-1126	https://blackbeltfound.org/	spencer@blackbeltfound.org	Community and Economic Development; Cultural Education; Arts; Education.			Only for Bullock, Choctaw, Dallas, Greene, Hale, Lowndes, Macon, Marengo, Perry, Pickens, Sumter & Wilcox Counties
Black Warrior Riverkeeper, Inc.	Nelson Brooke, Riverkeeper	712 37th Street South	Birmingham, Alabama 35222	205-458-0095	blackwarriorriver.org	info@blackwarriorriver.org	Pollution; Land and water conservation; Animals; Wildlife; Environment			Water policy and enforcement.
Community Foundation of West Alabama	Glenn Taylor, President and CEO	P.O. Box 3033	Tuscaloosa, Alaabama 35403	205-366-0698	thecfwa.org	gtaylor@thecfwa.org	Community Improvement; Religion	\$ 5,000	\$ 62,600	No replacement of government grants or funding.
Friends of Hale County Foundation		700 27th Place South	Birmingham, Alabama 35233	205-261-1113			Community Improvement; Economic Development; Business and Industry			
Holle Family Foundation	Ray O. Adon, Treasurer	2112 11th Avenue S #541	Birmingham, Alabama 35205	205-603-8746	hollefoundation.org		Human services; Community Improvement; Crime and Law, disaster	\$ 6,000	\$ 150,000	Bibb and Tuscaloosa counties.
Main Street Alabama	Mary Helmer Wirth, President	880 Montclair Road, Suite 245	Birmingham, Alabama 35213	205-910-8819	mainstreetalabama.org	mary@mainstreetalabama.org	Commercial Revitalization; Arts, cultural and humanities			Promotes strategies for commercial revitalization.
Mike and Gillian Goodrich Foundation	Carol W. Butler, Executive Director	3800 Colonnade Pkwy No 430	Birmingham, Alabama 35242	205-443-7809	mggoodrichfoundation.org	carol@mggoodrichfoundation.org	Arts, cultural and humanities; Community improvement	\$ 500	\$ 210,000	Greene and Hale counties as well as others.
Protective Life Foundation	Rich Bielen, President	P.O. Box 13008	Birmingham, Alabama 35202	205-268-1395	protective.com		Human Rights	\$ 100	\$ 681,280	Quality of life, neighborhoods, environment.
Robert Wood Johnson Foundation	Risa Lavizzo-Mourey	50 College Rd East	Princeton, NJ 08540	877-843-7953	rwjf.org		Health; Arts, cultural and humanities; Environment	\$ 50	\$ 5,700,000	Community Health.
Target Foundation		P.O. Box 1455	Minneapolis, MN 55440	612-761-9219	https://corporate.target.com/corporate-responsibility/philanthropy		Community Improvement			Disaster response; Small business and entrepreneurship; Workforce
The Daniel Foundation	Maria S. Kennedy, Executive Director	510 Office Park Drive, Ste 210	Birmingham, Alabama 35223	205-874-3523	danielfoundationofalabama.com	mkennedy@df-al.com	Broad-based			Broad-based grant-making foundation for community causes.
The Fayette Community Foundation	William Oswalt, Chairman/ President	P.O. Box 670	Fayette, Alabama 35555		http://fayetteal.org/		Community Improvement	\$ 2,000	\$ 48,077	Provides grants to various non-profits within Fayette County.
The Harry E. Bovay, Jr. Foundation	Michael Patrick, Director	1801 Smith Street, Suite 1900	Houston, TX	713-651-2328	bovayfoundation.org	rdietz@legacytrust.com	Education	\$ 2,000	\$ 782,074	Community grants to the towns of Millport and Kennedy.
U.S. Bank Foundation		P.O. Box 634	Milwaukee, WI 53201	866-366-7072	https://www.usbank.com/about-us-bank/community/charitable-giving-and-volunteerism.html	usbanksupport@cybergrants.com	Community Improvement; Economic Development			Examples: homeownership; small business technical assistance.
United Way of West Alabama	Jackie Wuska, President	P.O. Box 2291	Tuscaloosa, AL 35403	205-345-6640	uwwa.org	jackie@uwwa.org	Community Improvement	\$ 9,000	\$ 262,250	Various programs

V. GLOSSARY OF TERMS

Applicant – The entity that will apply for and carry out the grant.

Application Workshop – Agency-sponsored program to provide details about the funding source's program, application, requirements, and deadlines.

Architectural Services – Professional services provided by a licensed architect, typically for preliminary cost estimates, design services, bidding and contracting and construction management.

Audit – An examination of financial accounts for accuracy and program compliance. An audit may be a requirement of the program and be an eligible grant expense.

Benefit – The service, improvement, or facility provided by the project activity.

Budget – Outline of all costs associated with a project, activity or operation.

Census – Data used to establish population and provide other demographic, social and economic information.

Certified Assurances – Agreements signed by the chief elected official on behalf of the local government ensuring compliance with Federal statutes, regulations, policies, guidelines and requirements.

Citizen's Participation Plan – Approved and adopted plan that outlines the steps a local government will take to notify the public of proposed project applications and activities. The purpose of these steps is to facilitate and encourage the public to participate in the program.

Compliance workshop – Program to provide information about requirements and regulations that must be met to successfully carry out a funded grant.

Consultant – An individual or firm hired to provide professional services, typically for grant preparation and/or administration.

Cost/Benefit Ratio – A measure to indicate the dollar cost per beneficiary of an activity.

Direct Beneficiaries – Identification of persons who will receive a clear primary benefit from the project activity, for example, those persons living in homes that will be provided new water service.

Distress Criteria – Data such as unemployment, poverty, or income that a program may use to categorize an area as distressed. Many programs use distress to establish matching requirements.

DUNS Number – Data Universal Numbering System number assigned to a business, local government, police department, fire department, etc.

Engineering Services – Professional services provided by a licensed engineer, typically for preliminary cost estimates, design services, bidding and contracting and construction management.

Eligible Applicant – Type of entity or organization that may apply for and receive funds. Examples include governmental organizations, utility boards, non-profits, etc.

Eligibility Requirements – Any of a number of thresholds a program may use to determine if an application may be submitted and approved. Examples may include: not already having an open grant with the funding source; income level, poverty, or unemployment rate of the beneficiaries; other distress criteria of the population within the geographic area to be served by the project.

Employee Income Certification – Survey instrument used to gather income information from a direct beneficiary of an economic development activity.

Evaluation Criteria – Elements of the selection process or method used to score or rate applications.

Fee Scale – A guide to calculate the eligible fees for grant administration, engineering, or architectural services based upon the cost of construction or the total cost of the project. Allowances vary by program for different types of fees.

Full Application – A complete application package used to determine final award approval. This can serve as a second step if the program had requested pre-applications at an earlier date as a method to screen potential projects for eligibility.

Funding Announcement – Notification and details of availability of program funds that identifies uses, eligible applicants, funding priorities and other information required to apply for funds.

Funding Priorities – The types of activities or uses of funds that the program has determined are the most important for their consideration. Often, a program may have many “eligible” uses, but fund only selected activities during a given funding cycle. Priorities may change from year-to-year.

Grant Administrator – Individual or firm that manages the project. Duties may vary depending upon the requirements of the funding agency, but usually include maintaining compliance with all program regulations, rules and requirements and requests for payment. Also known as the Program Administrator.

Grant Agreement – The contract signed between the owner (applicant) and the funding agency identifying the amount of funds awarded, project start and end date, project identification number and other important requirements.

Grant Ceiling – The highest amount that can be requested from the program.

Grant Writer – Individual that prepares and completes the grant application forms and project narrative. Also coordinates with other parties to provide support documentation as required, such as a preliminary engineering report and cost estimate, for example.

In-Kind – Non-cash form of local matching funds. Examples of in-kind that a program may accept include land donation, labor, materials, or use of equipment used to carry out the project activity. Documentation and calculation of the value of the in-kind contribution can vary by funding source. The applicant should have staff or equipment suitable to perform the tasks required of the project if providing labor and equipment.

Income Limits – Range or income level used to determine eligibility of project beneficiaries.

Income Survey – Instrument used to collect and document income information.

Indirect Beneficiary – Individual who will receive a secondary or less straight-forward benefit from the project activity but does not qualify to be counted as a Direct Beneficiary. For example, an individual that may travel on a road but does not live along it, receives an indirect benefit if that road is paved or improved; whereas, the person living along the road receives a direct benefit and may be counted as an eligible beneficiary.

Indirect Benefit – A benefit, secondary in nature, which does not qualify as an eligible primary benefit.

Joint Application – Either two or more applicants applying together to carry out the project activity, also known as co-applicants, or a project activity that will require separate applications to two or more funding sources to complete the project.

Low and Moderate Income – The term used to describe the eligible income levels of beneficiaries for ADECA CDBG projects, also referred to as LMI.

Matching Share – The minimum amount, often expressed as a percentage, required to be provided by the applicant to be used with the grant award to carry out the project.

Needs Assessment – Process by which an area or community reviews deficiencies in specified categories such as water, sewer or streets, for example.

Operation and Maintenance – Reference to the use and continued care of facilities, typically to identify the party or parties that will take responsibility for, or ownership of, the facility. Provision of annual budgets and qualifications of personnel are often included.

Owner – The entity that will hold title to or establish ownership of the facility or improvement.

Pre-agreement Costs – Cost for professional services that may be needed during the application stage, generally engineering, that are procured and provided prior to a grant award. Generally, the costs for these services are not eligible for reimbursement by the grant; however, some programs do allow it. Check with the program for eligibility and requirements.

Pre-application – A brief summary of the project activity details made to the funding agency for review prior to being invited to submit a full application.

Preliminary Cost Estimate – Initial cost estimate prepared by a licensed engineer or architect. When submitted with a grant application it will provide the total costs of the project including fees for professional services and other fees necessary to complete and administer the project as applicable.

Private Investment – Amount of funds committed by a private entity to a project activity or the resulting investment from a funded project.

Procurement Policies – Adopted policies outlining methods for acquiring goods or services. Public bodies follow processes intended to promote fair and open competition, establish cost reasonableness, and comply with State Bid Law.

Professional Services – Any number of services provided to carry out a project such as engineering or architectural design, grant administration, real estate appraisal or others as needed.

Program Thresholds – Restrictions or requirements of a program that may, for example, limit the eligibility of an applicant, the amount of funds, or use of funds.

Project Activity – Scope of work as detailed in the project narrative and project budget.

Project Development – Preliminary steps taken to consider given needs, identify stakeholders, beneficiaries, costs, and potential funding sources in advance of preparing a grant application.

Public Hearing – An open meeting that is held to invite participation from the public and encourage their input.

Resolution – A formal document of a decision adopted by a local government or other body.

Responsible Entity – Unit of local government that is listed on the environmental review record.

SAM Registration – Online registration required for applicants applying for Federal funds.

Scope of Work – A description of the activities needed to carry out the project.

Site Visit – Visual inspection of the project area made by the funding agency that may occur during evaluation of the grant application or upon completion of the project.

STAARS – State of Alabama Accounting and Resource System. A vendor registration and procurement system. Grantees whose payments are issued from the state must register.

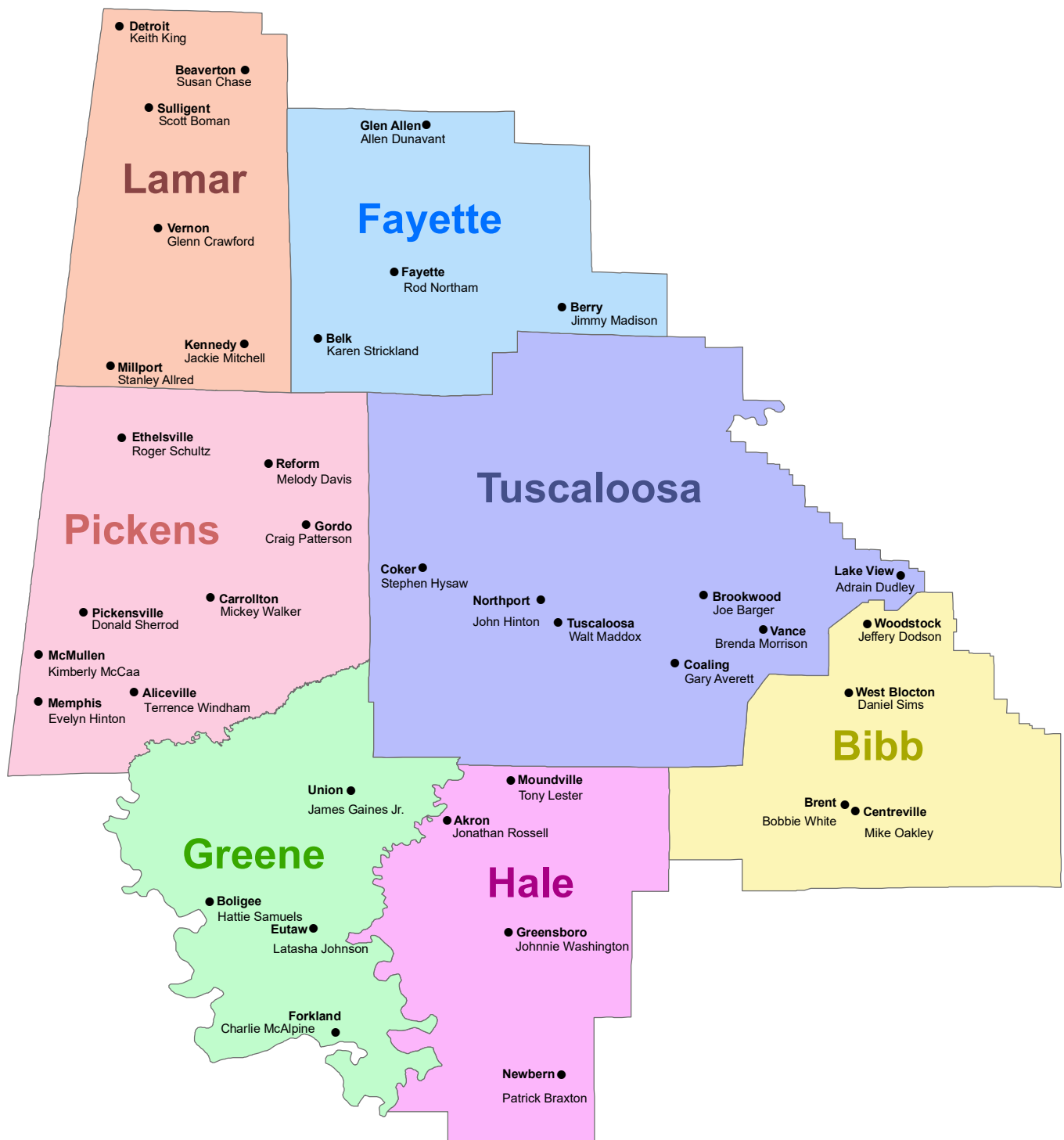
Support Documentation – Items that illustrate and/or demonstrate need, confirm program eligibility, or otherwise provide information relating to the grant request.

Tax ID/EIN – Individual number assigned to an entity for tax purposes.

Waiver – A release of conditions, such as for local match, or other requirements.

A. West Alabama Municipalities and Mayors

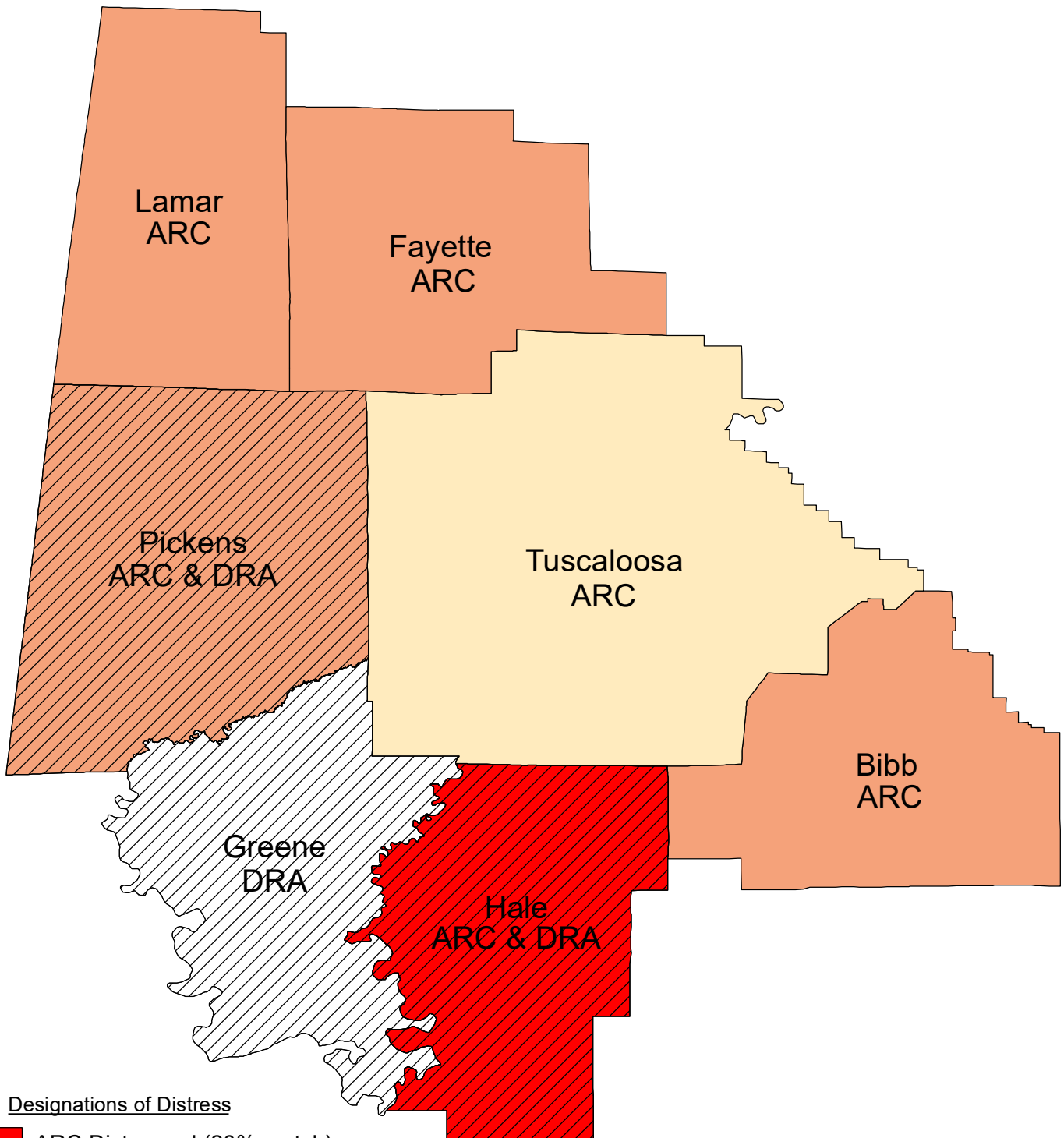
West Alabama Municipalities and Mayors





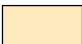
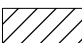
Revised November 2020

B. ARC and DRA Distressed Designations

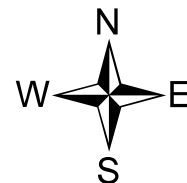
ARC and DRA Distress Designations



Designations of Distress

-  ARC Distressed (20% match)
-  ARC At Risk (30% match)
-  ARC Transitional (50% match)
-  DRA Distressed (no match)

Sources:
Basemap: WARC
Designations: ARC, DRA



C. West Alabama 2020-2010 Population Change

WEST ALABAMA 2020-2010 POPULATION CHANGE

Area	2020	2010	% Change
<i>Bibb County</i>	22,293	22,915	-2.7%
Brent, city	2,972	4,947	-39.9%
Centreville, city	2,800	2,778	0.80%
West Blocton, town	1,472	1,240	-1.9%
<i>Fayette County</i>	16,321	17,241	-5.3%
Belk, town	186	215	-13.5%
Berry, town	1,216	1,148	5.90%
Fayette, city	4,285	4,619	-7.2%
Glen Allen, town	433	510	-15.1%
<i>Greene County</i>	7,730	9,045	-14.5%
Boligee, town	301	328	-8.2%
Eutaw, city	2,937	2,934	0.10%
Forkland, town	445	649	-31.4%
Union, town	180	237	-24.1%
<i>Hale County</i>	14,785	15,760	-6.2%
Akron, town	225	356	-36.8%
Greensboro, city	2,218	2,497	-11.2%
Moundville, city	3,024	2,427	24.60%
Newbern, town	133	186	-28.5%
<i>Lamar County</i>	13,972	14,564	-4.1%
Beaverton, town	187	201	-7%
Detroit, town	230	237	-3%
Kennedy, town	435	447	-2.7%
Millport, town	1,010	1,049	-3.7%
Sulligent, town	1,879	1,927	-2.5%
<i>Pickens County</i>	19,123	19,746	-3.2%
Aliceville, city	2,177	2,486	-12.4%
Carrollton, town	1,023	1,019	0.40%
Ethelsville, town	49	81	-39.5%
Gordo, town	1,628	1,750	-7%
McMullen, town	32	10	220%
Memphis, town	29	29	0%
Pickensville town	557	608	-8.4%
Reform, town	1,520	1,720	-10.70%
<i>Tuscaloosa County</i>	227,036	194,656	16.60%
Brookwood, city	2,504	1,828	37%
Coaling, city	2,035	1,657	22.80%
Coker, town	904	979	-7.7%
Lake View, city	3,560	1,943	83.20%
Northport, city	31,125	23,330	33.40%
Tuscaloosa, city	99,600	90,468	10.10%
Vance, city	2,092	1,529	36.80%

D. CDBG Low and Moderate-Income Data

CDBG LOW AND MODERATE-INCOME, COUNTY AND TOWNWIDE
HUD release date 4/1/19

GROUP	COUNTYNAME	PLACENAME	LOW/MOD Persons	LOW/MOD Universe	LOW/MOD Percent
COUNTY	BIBB COUNTY		11,949	20,745	57.60%
PLACE		Brent city	2,295	3,205	71.61%
PLACE		Centreville city	1,455	2,600	55.96%
PLACE		West Blocton town	805	1,360	59.19%
PLACE		Woodstock town	800	1,765	45.33%
COUNTY	FAYETTE COUNTY		6,480	16,580	39.08%
PLACE		Belk town	150	290	51.72%
PLACE		Berry town	650	1,390	46.76%
PLACE		Fayette city	2,030	4,300	47.21%
PLACE		Glen Allen town	260	515	50.49%
COUNTY	GREENE COUNTY		5,425	8,640	62.79%
PLACE		Boligee town	500	640	66.67%
PLACE		Eutaw town	1,555	2,780	55.94%
PLACE		Forkland town	595	765	77.78%
PLACE		Union town	130	270	48.15%
COUNTY	HALE COUNTY		8,480	14,995	56.55%
PLACE		Akron town	250	290	86.21%
PLACE		Greensboro city	1,545	2,400	64.38%
PLACE		Moundville town	1,040	2,115	49.17%
PLACE		Newbern town	95	160	59.38%
COUNTY	LAMAR COUNTY		6,170	13,925	44.31%
PLACE		Beaverton town	115	275	41.82%
PLACE		Detroit town	115	215	53.49%
PLACE		Kennedy town	165	410	40.24%
PLACE		Millport town	480	1,070	44.86%
PLACE		Sulligent city	920	1,955	47.06%
PLACE		Vernon city	1,050	2,200	47.73%
COUNTY	PICKENS COUNTY		9,264	19,179	48.30%
PLACE		Aliceville city	2,600	3,615	71.92%
PLACE		Carrollton town	380	895	42.46%
PLACE		Ethelsville town	50	100	50.00%
PLACE		Gordo town	750	1,680	44.64%
PLACE		McMullen town	4	4	100.00%
PLACE		Memphis town	30	40	75.00%
PLACE		Pickensville town	345	660	52.27%
PLACE		Reform town	1,135	1,925	58.96%
COUNTY	TUSCALOOSA COUNTY		77,770	190,015	40.93%
PLACE		Brookwood town	670	1,930	34.72%
PLACE		Coaling town	620	1,790	34.64%
PLACE		Coker town	285	820	34.76%
PLACE		Lake View town	320	2,415	13.25%
PLACE		Northport city	7,460	23,720	31.45%
PLACE		Vance town	270	1,300	20.77%

Note: the City of Tuscaloosa is classified as an Entitlement City and does not participate in the State CDBG program.
SOURCE: HUD

E. CDBG Beneficiary Survey Form (PY2022 Income Limits)

2022 CDBG BENEFICIARY SURVEY FORM
BIBB COUNTY

The _____ intends to apply to the Alabama Department of Economic and Community Affairs for a Community Development Block Grant to _____.

In order to determine if this project meets eligibility criteria, the following information must be obtained from a representative sample of proposed beneficiaries.

Name of Occupant : _____ Survey map reference
Address: _____
_____ No. _____

No. of persons in House: _____ Homeowner: _____ Tenant: _____

Female Headed Household: Yes: ____ No: ____ Number of Disabled Residents in Home: ____

Is the ethnicity of this house
Hispanic or Latino?

____ Yes ____ No

Race of Household

White____ Black/African American____ Asian____
American Indian/Alaskan Native ____
Native Hawaiian/Other Pacific Islander____
Am. Indian/Alaskan Native and White____
Asian and White____ Black/African American and White____
Am. Indian/Alaskan Native and Black____ Other Multi-Racial____

Please circle the income range under the number of persons in your house that most closely corresponds to your total household income from all sources for the last calendar year.

1 Person	2 Persons	3 Persons	4 Persons	5 Persons	6 Persons	7 Persons	8 or More Persons
\$0 to \$17,850	\$0 to \$20,400	\$0 to \$22,950	\$0 to \$25,450	\$0 to \$27,500	\$0 to \$29,550	\$0 to \$31,600	\$0 to \$33,600
\$17,851 to \$29,700	\$20,401 to \$33,950	\$22,951 to \$38,200	\$25,451 to \$42,400	\$27,501 to \$45,800	\$29,551 to \$49,200	\$31,601 to \$52,600	\$33,601 to \$56,000
\$29,701 to \$47,500	\$33,951 to \$54,300	\$38,201 to \$61,100	\$42,401 to \$67,850	\$45,801 to \$73,300	\$49,201 to \$78,750	\$52,601 to \$84,150	\$56,001 to \$89,600
\$47,501 & Over	\$54,301 & Over	\$61,101 & Over	\$67,851 & Over	\$73,301 & Over	\$78,751 & Over	\$84,151 & Over	\$89,601 & Over

CERTIFICATION: I attest that information stated above is true and accurate.

*Surveyor's Signature: _____ Date: _____

2022 CDBG BENEFICIARY SURVEY FORM
FAYETTE COUNTY

The _____ intends to apply to the Alabama Department of Economic and Community Affairs for a Community Development Block Grant to _____.

In order to determine if this project meets eligibility criteria, the following information must be obtained from a representative sample of proposed beneficiaries.

Name of Occupant : _____ Survey map reference _____

Address: _____

 _____ No. _____

No. of persons in House: _____ Homeowner: _____ Tenant: _____

Female Headed Household: Yes: ____ No: ____ Number of Disabled Residents in Home: ____

Is the ethnicity of this house
Hispanic or Latino?

____ Yes ____ No

Race of Household

White____ Black/African American____ Asian____
 American Indian/Alaskan Native ____
 Native Hawaiian/Other Pacific Islander____
 Am. Indian/Alaskan Native and White____
 Asian and White____ Black/African American and White____
 Am. Indian/Alaskan Native and Black____ Other Multi-Racial____

Please circle the income range under the number of persons in your house that most closely corresponds to your total household income from all sources for the last calendar year.

1 Person	2 Persons	3 Persons	4 Persons	5 Persons	6 Persons	7 Persons	8 or More Persons
\$0 to \$12,950	\$0 to \$14,800	\$0 to \$16,650	\$0 to \$18,500	\$0 to \$20,000	\$0 to \$21,500	\$0 to \$22,950	\$0 to \$24,450
\$12,951 to \$21,600	\$14,801 to \$24,650	\$16,651 to \$27,750	\$18,501 to \$30,800	\$20,001 to \$33,300	\$21,501 to \$35,750	\$22,951 to \$38,200	\$24,451 to \$40,700
\$21,601 to \$34,550	\$24,651 to \$39,450	\$27,751 to \$44,400	\$30,801 to \$49,300	\$33,301 to \$53,250	\$35,751 to \$57,200	\$38,201 to \$61,150	\$40,701 to \$65,100
\$34,551 & Over	\$39,451 & Over	\$44,401 & Over	\$49,301 & Over	\$53,251 & Over	\$57,201 & Over	\$61,151 & Over	\$65,101 & Over

CERTIFICATION: I attest that information stated above is true and accurate.

*Surveyor's Signature: _____ Date: _____

2022 CDBG BENEFICIARY SURVEY FORM
GREENE COUNTY

The _____ intends to apply to the Alabama Department of Economic and Community Affairs for a Community Development Block Grant to _____.

In order to determine if this project meets eligibility criteria, the following information must be obtained from a representative sample of proposed beneficiaries.

Name of Occupant: _____ Survey map reference
Address: _____
_____ No. _____

No. of persons in House: _____ Homeowner: _____ Tenant: _____

Female Headed Household: Yes: ____ No: ____ Number of Disabled Residents in Home: ____

Is the ethnicity of this house
Hispanic or Latino?

____ Yes ____ No

Race of Household

White____ Black/African American____ Asian____
American Indian/Alaskan Native____
Native Hawaiian/Other Pacific Islander____
Am. Indian/Alaskan Native and White____
Asian and White____ Black/African American and White____
Am. Indian/Alaskan Native and Black____ Other Multi-Racial____

Please circle the income range under the number of persons in your house that most closely corresponds to your total household income from all sources for the last calendar year.

1 Person	2 Persons	3 Persons	4 Persons	5 Persons	6 Persons	7 Persons	8 or More Persons
\$0 to \$12,950	\$0 to \$14,800	\$0 to \$16,650	\$0 to \$18,500	\$0 to \$20,000	\$0 to \$21,500	\$0 to \$22,950	\$0 to \$24,450
\$12,951 to \$21,600	\$14,801 to \$24,650	\$16,651 to \$27,750	\$18,501 to \$30,800	\$20,001 to \$33,300	\$21,501 to \$35,750	\$22,951 to \$38,200	\$24,451 to \$40,700
\$21,601 to \$34,550	\$24,651 to \$39,450	\$27,751 to \$44,400	\$30,801 to \$49,300	\$33,301 to \$53,250	\$35,751 to \$57,200	\$38,201 to \$61,150	\$40,701 to \$65,100
\$34,551 & Over	\$39,451 & Over	\$44,401 & Over	\$49,301 & Over	\$53,251 & Over	\$57,201 & Over	\$61,151 & Over	\$65,101 & Over

CERTIFICATION: I attest that information stated above is true and accurate.

*Surveyor's Signature: _____ Date: _____

2022 CDBG BENEFICIARY SURVEY FORM
HALE COUNTY

The _____ intends to apply to the Alabama Department of Economic and Community Affairs for a Community Development Block Grant to _____.

In order to determine if this project meets eligibility criteria, the following information must be obtained from a representative sample of proposed beneficiaries.

Name of Occupant : _____ Survey map reference
Address: _____
_____ No. _____

No. of persons in House: _____ Homeowner: _____ Tenant: _____

Female Headed Household: Yes: ____ No: ____ Number of Disabled Residents in Home: ____

Is the ethnicity of this house
Hispanic or Latino?

____ Yes ____ No

Race of Household

White____ Black/African American____ Asian____
American Indian/Alaskan Native ____
Native Hawaiian/Other Pacific Islander____
Am. Indian/Alaskan Native and White____
Asian and White____ Black/African American and White____
Am. Indian/Alaskan Native and Black____ Other Multi-Racial____

Please circle the income range under the number of persons in your house that most closely corresponds to your total household income from all sources for the last calendar year.

1 Person	2 Persons	3 Persons	4 Persons	5 Persons	6 Persons	7 Persons	8 or More Persons
\$0 to \$16,350	\$0 to \$18,650	\$0 to \$21,000	\$0 to \$23,300	\$0 to \$25,200	\$0 to \$27,050	\$0 to \$28,900	\$0 to \$30,800
\$16,351 to \$27,200	\$18,651 to \$31,050	\$21,001 to \$34,950	\$23,301 to \$38,800	\$25,201 to \$41,950	\$27,051 to \$45,050	\$28,901 to \$48,150	\$30,801 to \$51,250
\$27,201 to \$43,500	\$31,051 to \$49,700	\$34,951 to \$55,900	\$38,801 to \$62,100	\$41,951 to \$67,100	\$45,051 to \$72,050	\$48,151 to \$77,050	\$51,251 to \$82,000
\$43,501 & Over	\$49,701 & Over	\$55,901 & Over	\$62,101 & Over	\$67,101 & Over	\$72,051 & Over	\$77,051 & Over	\$82,001 & Over

CERTIFICATION: I attest that information stated above is true and accurate.

*Surveyor's Signature: _____ Date: _____

2022 CDBG BENEFICIARY SURVEY FORM
LAMAR COUNTY

The _____ intends to apply to the Alabama Department of Economic and Community Affairs for a Community Development Block Grant to _____.

In order to determine if this project meets eligibility criteria, the following information must be obtained from a representative sample of proposed beneficiaries.

Name of Occupant : _____ Survey map reference
Address: _____
_____ No. _____

No. of persons in House: _____ Homeowner: _____ Tenant: _____

Female Headed Household: Yes: ____ No: ____ Number of Disabled Residents in Home: ____

Is the ethnicity of this house
Hispanic or Latino?

____ Yes ____ No

Race of Household

White____ Black/African American____ Asian____
American Indian/Alaskan Native ____
Native Hawaiian/Other Pacific Islander____
Am. Indian/Alaskan Native and White____
Asian and White____ Black/African American and White____
Am. Indian/Alaskan Native and Black____ Other Multi-Racial____

Please circle the income range under the number of persons in your house that most closely corresponds to your total household income from all sources for the last calendar year.

1 Person	2 Persons	3 Persons	4 Persons	5 Persons	6 Persons	7 Persons	8 or More Persons
\$0 to \$12,950	\$0 to \$14,800	\$0 to \$16,650	\$0 to \$18,500	\$0 to \$20,000	\$0 to \$21,500	\$0 to \$22,950	\$0 to \$24,450
\$12,951 to \$21,600	\$14,801 to \$24,650	\$16,651 to \$27,750	\$18,501 to \$30,800	\$20,001 to \$33,300	\$21,501 to \$35,750	\$22,951 to \$38,200	\$24,451 to \$40,700
\$21,601 to \$34,550	\$24,651 to \$39,450	\$27,751 to \$44,400	\$30,801 to \$49,300	\$33,301 to \$53,250	\$35,751 to \$57,200	\$38,201 to \$61,150	\$40,701 to \$65,100
\$34,551 & Over	\$39,451 & Over	\$44,401 & Over	\$49,301 & Over	\$53,251 & Over	\$57,201 & Over	\$61,151 & Over	\$65,101 & Over

CERTIFICATION: I attest that information stated above is true and accurate.

*Surveyor's Signature: _____ Date: _____

2022 CDBG BENEFICIARY SURVEY FORM
PICKENS COUNTY

The _____ intends to apply to the Alabama Department of Economic and Community Affairs for a Community Development Block Grant to _____.

In order to determine if this project meets eligibility criteria, the following information must be obtained from a representative sample of proposed beneficiaries.

Name of Occupant : _____ Survey map reference
Address: _____
_____ No. _____

No. of persons in House: _____ Homeowner: _____ Tenant: _____

Female Headed Household: Yes: ____ No: ____ Number of Disabled Residents in Home: _____

Is the ethnicity of this house
Hispanic or Latino?

____ Yes ____ No

Race of Household

White____ Black/African American____ Asian____
American Indian/Alaskan Native _____
Native Hawaiian/Other Pacific Islander_____
Am. Indian/Alaskan Native and White_____
Asian and White____ Black/African American and White_____
Am. Indian/Alaskan Native and Black____ Other Multi-Racial_____

Please circle the income range under the number of persons in your house that most closely corresponds to your total household income from all sources for the last calendar year.

1 Person	2 Persons	3 Persons	4 Persons	5 Persons	6 Persons	7 Persons	8 or More Persons
\$0 to \$12,950	\$0 to \$14,800	\$0 to \$16,650	\$0 to \$18,500	\$0 to \$20,000	\$0 to \$21,500	\$0 to \$22,950	\$0 to \$24,450
\$12,951 to \$21,600	\$14,801 to \$24,650	\$16,651 to \$27,750	\$18,501 to \$30,800	\$20,001 to \$33,300	\$21,501 to \$35,750	\$22,951 to \$38,200	\$24,451 to \$40,700
\$21,601 to \$34,550	\$24,651 to \$39,450	\$27,751 to \$44,400	\$30,801 to \$49,300	\$33,301 to \$53,250	\$35,751 to \$57,200	\$38,201 to \$61,150	\$40,701 to \$65,100
\$34,551 & Over	\$39,451 & Over	\$44,401 & Over	\$49,301 & Over	\$53,251 & Over	\$57,201 & Over	\$61,151 & Over	\$65,101 & Over

CERTIFICATION: I attest that information stated above is true and accurate.

*Surveyor's Signature: _____ Date: _____

2022 CDBG BENEFICIARY SURVEY FORM
TUSCALOOSA COUNTY

The _____ intends to apply to the Alabama Department of Economic and Community Affairs for a Community Development Block Grant to _____.

In order to determine if this project meets eligibility criteria, the following information must be obtained from a representative sample of proposed beneficiaries.

Name of Occupant : _____ Survey map reference
Address: _____
_____ No. _____

No. of persons in House: _____ Homeowner: _____ Tenant: _____

Female Headed Household: Yes: ____ No: ____ Number of Disabled Residents in Home: ____

Is the ethnicity of this house
Hispanic or Latino?

____ Yes ____ No

Race of Household

White____ Black/African American____ Asian____
American Indian/Alaskan Native ____
Native Hawaiian/Other Pacific Islander____
Am. Indian/Alaskan Native and White____
Asian and White____ Black/African American and White____
Am. Indian/Alaskan Native and Black____ Other Multi-Racial____

Please circle the income range under the number of persons in your house that most closely corresponds to your total household income from all sources for the last calendar year.

1 Person	2 Persons	3 Persons	4 Persons	5 Persons	6 Persons	7 Persons	8 or More Persons
\$0 to \$16,350	\$0 to \$18,650	\$0 to \$21,000	\$0 to \$23,300	\$0 to \$25,200	\$0 to \$27,050	\$0 to \$28,900	\$0 to \$30,800
\$16,351 to \$27,200	\$18,651 to \$31,050	\$21,001 to \$34,950	\$23,301 to \$38,800	\$25,201 to \$41,950	\$27,051 to \$45,050	\$28,901 to \$48,150	\$30,801 to \$51,250
\$27,201 to \$43,500	\$31,051 to \$49,700	\$34,951 to \$55,900	\$38,801 to \$62,100	\$41,951 to \$67,100	\$45,051 to \$72,050	\$48,151 to \$77,050	\$51,251 to \$82,000
\$43,501 & Over	\$49,701 & Over	\$55,901 & Over	\$62,101 & Over	\$67,101 & Over	\$72,051 & Over	\$77,051 & Over	\$82,001 & Over

CERTIFICATION: I attest that information stated above is true and accurate.

*Surveyor's Signature: _____ Date: _____

F. CDBG Economic Development Employee Income
Certification (PY2022 Income Limits)

2022 ECONOMIC DEVELOPMENT EMPLOYEE INCOME CERTIFICATION
BIBB COUNTY

The _____ is using funds from the ADECA for the construction of _____ . In order to document the eligibility of the project, the following information must be obtained from the beneficiaries. Information will be kept in the strictest confidence.

Name of applicant/employee: _____
Address: _____

Does employer offer health care for this job? Yes _____ No _____

Was employee unemployed before taking this job? Yes _____ No _____

Brief description of job type/duties: _____

Number of Persons in Household: _____

If female, are you head-of-household: Yes: _____ No: _____

Employee is disabled: Yes: _____ No: _____

Ethnicity

Hispanic or Latino?

_____Yes _____No

Race of Household

White _____ Black/African American _____ Asian _____

American Indian/Alaskan Native _____

Native Hawaiian/Other Pacific Islander _____

Am. Indian/Alaskan Native and White _____

Asian and White _____ Black/African American and White _____

Am. Indian/Alaskan Native and Black _____

Other Multi-Racial _____

Please circle the income range under the number of persons in your house that most closely corresponds to your total household income from all sources for the last calendar year.

1 Person	2 Persons	3 Persons	4 Persons	5 Persons	6 Persons	7 Persons	8 or More Persons
\$0 to \$17,850	\$0 to \$20,400	\$0 to \$22,950	\$0 to \$25,450	\$0 to \$27,500	\$0 to \$29,550	\$0 to \$31,600	\$0 to \$33,600
\$17,851 to \$29,700	\$20,401 to \$33,950	\$22,951 to \$38,200	\$25,451 to \$42,400	\$27,501 to \$45,800	\$29,551 to \$49,200	\$31,601 to \$52,600	\$33,601 to \$56,000
\$29,701 to \$47,500	\$33,951 to \$54,300	\$38,201 to \$61,100	\$42,401 to \$67,850	\$45,801 to \$73,300	\$49,201 to \$78,750	\$52,601 to \$84,150	\$56,001 to \$89,600
\$47,501 & Over	\$54,301 & Over	\$61,101 & Over	\$67,851 & Over	\$73,301 & Over	\$78,751 & Over	\$84,151 & Over	\$89,601 & Over

Employee's signature: _____ Date: _____

2022 ECONOMIC DEVELOPMENT EMPLOYEE INCOME CERTIFICATION
FAYETTE COUNTY

The _____ is using funds from the ADECA for the construction of _____ . In order to document the eligibility of the project, the following information must be obtained from the beneficiaries. Information will be kept in the strictest confidence.

Name of applicant/employee: _____
Address: _____

Does employer offer health care for this job? Yes _____ No _____
Was employee unemployed before taking this job? Yes _____ No _____
Brief description of job type/duties: _____

Number of Persons in Household: _____
If female, are you head-of-household: Yes: ____ No: ____
Employee is disabled: Yes: _____ No: _____

<u>Ethnicity</u>	<u>Race of Household</u>
Hispanic or Latino?	White____ Black/African American____ Asian____
_____Yes _____No	American Indian/Alaskan Native _____
	Native Hawaiian/Other Pacific Islander____
	Am. Indian/Alaskan Native and White____
	Asian and White____ Black/African American and White____
	Am. Indian/Alaskan Native and Black____
	Other Multi-Racial_____

Please circle the income range under the number of persons in your house that most closely corresponds to your total household income from all sources for the last calendar year.

1 Person	2 Persons	3 Persons	4 Persons	5 Persons	6 Persons	7 Persons	8 or More Persons
\$0 to \$12,950	\$0 to \$14,800	\$0 to \$16,650	\$0 to \$18,500	\$0 to \$20,000	\$0 to \$21,500	\$0 to \$22,950	\$0 to \$24,450
\$12,951 to \$21,600	\$14,801 to \$24,650	\$16,651 to \$27,750	\$18,501 to \$30,800	\$20,001 to \$33,300	\$21,501 to \$35,750	\$22,951 to \$38,200	\$24,451 to \$40,700
\$21,601 to \$34,550	\$24,651 to \$39,450	\$27,751 to \$44,400	\$30,801 to \$49,300	\$33,301 to \$53,250	\$35,751 to \$57,200	\$38,201 to \$61,150	\$40,701 to \$65,100
\$34,551 & Over	\$39,451 & Over	\$44,401 & Over	\$49,301 & Over	\$53,251 & Over	\$57,201 & Over	\$61,151 & Over	\$65,101 & Over

Employee's signature: _____ Date: _____

2022 ECONOMIC DEVELOPMENT EMPLOYEE INCOME CERTIFICATION
GREENE COUNTY

The _____ is using funds from the ADECA for the construction of _____ . In order to document the eligibility of the project, the following information must be obtained from the beneficiaries. Information will be kept in the strictest confidence.

Name of applicant/employee: _____
Address: _____

Does employer offer health care for this job? Yes _____ No _____
Was employee unemployed before taking this job? Yes _____ No _____
Brief description of job type/duties: _____

Number of Persons in Household: _____
If female, are you head-of-household: Yes: ____ No: ____
Employee is disabled: Yes: _____ No: _____

<u>Ethnicity</u>	<u>Race of Household</u>
Hispanic or Latino?	White____ Black/African American____ Asian____
_____Yes _____No	American Indian/Alaskan Native _____
	Native Hawaiian/Other Pacific Islander_____
	Am. Indian/Alaskan Native and White_____
	Asian and White_____ Black/African American and White_____
	Am. Indian/Alaskan Native and Black_____
	Other Multi-Racial_____

Please circle the income range under the number of persons in your house that most closely corresponds to your total household income from all sources for the last calendar year.

1 Person	2 Persons	3 Persons	4 Persons	5 Persons	6 Persons	7 Persons	8 or More Persons
\$0 to \$12,950	\$0 to \$14,800	\$0 to \$16,650	\$0 to \$18,500	\$0 to \$20,000	\$0 to \$21,500	\$0 to \$22,950	\$0 to \$24,450
\$12,951 to \$21,600	\$14,801 to \$24,650	\$16,651 to \$27,750	\$18,501 to \$30,800	\$20,001 to \$33,300	\$21,501 to \$35,750	\$22,951 to \$38,200	\$24,451 to \$40,700
\$21,601 to \$34,550	\$24,651 to \$39,450	\$27,751 to \$44,400	\$30,801 to \$49,300	\$33,301 to \$53,250	\$35,751 to \$57,200	\$38,201 to \$61,150	\$40,701 to \$65,100
\$34,551 & Over	\$39,451 & Over	\$44,401 & Over	\$49,301 & Over	\$53,251 & Over	\$57,201 & Over	\$61,151 & Over	\$65,101 & Over

Employee's signature: _____ Date: _____

2022 ECONOMIC DEVELOPMENT EMPLOYEE INCOME CERTIFICATION
HALE COUNTY

The _____ is using funds from the ADECA for the construction of _____ . In order to document the eligibility of the project, the following information must be obtained from the beneficiaries. Information will be kept in the strictest confidence.

Name of applicant/employee: _____

Address: _____

Does employer offer health care for this job? Yes _____ No _____

Was employee unemployed before taking this job? Yes _____ No _____

Brief description of job type/duties: _____

Number of Persons in Household: _____

If female, are you head-of-household: Yes: _____ No: _____

Employee is disabled: Yes: _____ No: _____

Ethnicity

Hispanic or Latino?

_____Yes _____No

Race of Household

White _____ Black/African American _____ Asian _____

American Indian/Alaskan Native _____

Native Hawaiian/Other Pacific Islander _____

Am. Indian/Alaskan Native and White _____

Asian and White _____ Black/African American and White _____

Am. Indian/Alaskan Native and Black _____

Other Multi-Racial _____

Please circle the income range under the number of persons in your house that most closely corresponds to your total household income from all sources for the last calendar year.

1 Person	2 Persons	3 Persons	4 Persons	5 Persons	6 Persons	7 Persons	8 or More Persons
\$0 to \$16,350	\$0 to \$18,650	\$0 to \$21,000	\$0 to \$23,300	\$0 to \$25,200	\$0 to \$27,050	\$0 to \$28,900	\$0 to \$30,800
\$16,351 to \$27,200	\$18,651 to \$31,050	\$21,001 to \$34,950	\$23,301 to \$38,800	\$25,201 to \$41,950	\$27,051 to \$45,050	\$28,901 to \$48,150	\$30,801 to \$51,250
\$27,201 to \$43,500	\$31,051 to \$49,700	\$34,951 to \$55,900	\$38,801 to \$62,100	\$41,951 to \$67,100	\$45,051 to \$72,050	\$48,151 to \$77,050	\$51,251 to \$82,000
\$43,501 & Over	\$49,701 & Over	\$55,901 & Over	\$62,101 & Over	\$67,101 & Over	\$72,051 & Over	\$77,051 & Over	\$82,001 & Over

Employee's signature: _____ Date: _____

2022 ECONOMIC DEVELOPMENT EMPLOYEE INCOME CERTIFICATION
LAMAR COUNTY

The _____ is using funds from the ADECA for the construction of _____ . In order to document the eligibility of the project, the following information must be obtained from the beneficiaries. Information will be kept in the strictest confidence.

Name of applicant/employee: _____
Address: _____

Does employer offer health care for this job? Yes _____ No _____
Was employee unemployed before taking this job? Yes _____ No _____
Brief description of job type/duties: _____

Number of Persons in Household: _____
If female, are you head-of-household: Yes: ____ No: ____
Employee is disabled: Yes: _____ No: _____

<u>Ethnicity</u>	<u>Race of Household</u>
Hispanic or Latino?	White____ Black/African American____ Asian____
_____Yes _____No	American Indian/Alaskan Native _____
	Native Hawaiian/Other Pacific Islander____
	Am. Indian/Alaskan Native and White____
	Asian and White____ Black/African American and White____
	Am. Indian/Alaskan Native and Black____
	Other Multi-Racial____

Please circle the income range under the number of persons in your house that most closely corresponds to your total household income from all sources for the last calendar year.

1 Person	2 Persons	3 Persons	4 Persons	5 Persons	6 Persons	7 Persons	8 or More Persons
\$0 to \$12,950	\$0 to \$14,800	\$0 to \$16,650	\$0 to \$18,500	\$0 to \$20,000	\$0 to \$21,500	\$0 to \$22,950	\$0 to \$24,450
\$12,951 to \$21,600	\$14,801 to \$24,650	\$16,651 to \$27,750	\$18,501 to \$30,800	\$20,001 to \$33,300	\$21,501 to \$35,750	\$22,951 to \$38,200	\$24,451 to \$40,700
\$21,601 to \$34,550	\$24,651 to \$39,450	\$27,751 to \$44,400	\$30,801 to \$49,300	\$33,301 to \$53,250	\$35,751 to \$57,200	\$38,201 to \$61,150	\$40,701 to \$65,100
\$34,551 & Over	\$39,451 & Over	\$44,401 & Over	\$49,301 & Over	\$53,251 & Over	\$57,201 & Over	\$61,151 & Over	\$65,101 & Over

Employee's signature: _____ Date: _____

2022 ECONOMIC DEVELOPMENT EMPLOYEE INCOME CERTIFICATION
PICKENS COUNTY

The _____ is using funds from the ADECA for the construction of _____ . In order to document the eligibility of the project, the following information must be obtained from the beneficiaries. Information will be kept in the strictest confidence.

Name of applicant/employee: _____
Address: _____

Does employer offer health care for this job? Yes _____ No _____
Was employee unemployed before taking this job? Yes _____ No _____
Brief description of job type/duties: _____

Number of Persons in Household: _____
If female, are you head-of-household: Yes: ____ No: ____
Employee is disabled: Yes: _____ No: _____

<u>Ethnicity</u>	<u>Race of Household</u>
Hispanic or Latino?	White____ Black/African American____ Asian____
_____Yes _____No	American Indian/Alaskan Native _____
	Native Hawaiian/Other Pacific Islander____
	Am. Indian/Alaskan Native and White____
	Asian and White____ Black/African American and White____
	Am. Indian/Alaskan Native and Black____
	Other Multi-Racial____

Please circle the income range under the number of persons in your house that most closely corresponds to your total household income from all sources for the last calendar year.

1 Person	2 Persons	3 Persons	4 Persons	5 Persons	6 Persons	7 Persons	8 or More Persons
\$0 to \$12,950	\$0 to \$14,800	\$0 to \$16,650	\$0 to \$18,500	\$0 to \$20,000	\$0 to \$21,500	\$0 to \$22,950	\$0 to \$24,450
\$12,951 to \$21,600	\$14,801 to \$24,650	\$16,651 to \$27,750	\$18,501 to \$30,800	\$20,001 to \$33,300	\$21,501 to \$35,750	\$22,951 to \$38,200	\$24,451 to \$40,700
\$21,601 to \$34,550	\$24,651 to \$39,450	\$27,751 to \$44,400	\$30,801 to \$49,300	\$33,301 to \$53,250	\$35,751 to \$57,200	\$38,201 to \$61,150	\$40,701 to \$65,100
\$34,551 & Over	\$39,451 & Over	\$44,401 & Over	\$49,301 & Over	\$53,251 & Over	\$57,201 & Over	\$61,151 & Over	\$65,101 & Over

Employee's signature: _____ Date: _____

2022 ECONOMIC DEVELOPMENT EMPLOYEE INCOME CERTIFICATION
TUSCALOOSA COUNTY

The _____ is using funds from the ADECA for the construction of _____ . In order to document the eligibility of the project, the following information must be obtained from the beneficiaries. Information will be kept in the strictest confidence.

Name of applicant/employee: _____

Address: _____

Does employer offer health care for this job? Yes _____ No _____

Was employee unemployed before taking this job? Yes _____ No _____

Brief description of job type/duties: _____

Number of Persons in Household: _____

If female, are you head-of-household: Yes: ____ No: ____

Employee is disabled: Yes: ____ No: ____

Ethnicity

Hispanic or Latino?

____ Yes ____ No

Race of Household

White ____ Black/African American ____ Asian ____

American Indian/Alaskan Native ____

Native Hawaiian/Other Pacific Islander ____

Am. Indian/Alaskan Native and White ____

Asian and White ____ Black/African American and White ____

Am. Indian/Alaskan Native and Black ____

Other Multi-Racial ____

Please circle the income range under the number of persons in your house that most closely corresponds to your total household income from all sources for the last calendar year.

1 Person	2 Persons	3 Persons	4 Persons	5 Persons	6 Persons	7 Persons	8 or More Persons
\$0 to \$16,350	\$0 to \$18,650	\$0 to \$21,000	\$0 to \$23,300	\$0 to \$25,200	\$0 to \$27,050	\$0 to \$28,900	\$0 to \$30,800
\$16,351 to \$27,200	\$18,651 to \$31,050	\$21,001 to \$34,950	\$23,301 to \$38,800	\$25,201 to \$41,950	\$27,051 to \$45,050	\$28,901 to \$48,150	\$30,801 to \$51,250
\$27,201 to \$43,500	\$31,051 to \$49,700	\$34,951 to \$55,900	\$38,801 to \$62,100	\$41,951 to \$67,100	\$45,051 to \$72,050	\$48,151 to \$77,050	\$51,251 to \$82,000
\$43,501 & Over	\$49,701 & Over	\$55,901 & Over	\$62,101 & Over	\$67,101 & Over	\$72,051 & Over	\$77,051 & Over	\$82,001 & Over

Employee's signature: _____ Date: _____

G. USDA Engineering Fee Scale



United States Department of Agriculture
Alabama Rural Development
(Modified for Alabama CDBG projects 3/10/10)

APPROVED FEES FOR PROFESSIONAL ENGINEERING SERVICES
(AS A PERCENTAGE OF NET CONSTRUCTION PLUS CONTINGENCY COSTS)

Table I will apply to package lift stations, package treatment plants (water and sewer) where the supplier furnishes shop drawings, water distribution systems and related appurtenances.. Table II ordinarily will apply to that portion of a construction project which is unusually complex because it includes a water treatment plant, sewer, sewer treatment plant or the rehabilitation of an existing facility and drainage* projects. Table III* will apply for all highway, roadway and rail projects. Table IV* will apply for all resident inspection.

NET CONSTRUCTION + CONTINGENCY COST	TABLE I	TABLE II	TABLE III*	TABLE IV*
\$ 0 – 99,999	10.0	12.0	10.0	
100,000	9.6	11.5	9.4	6.0
200,000	8.8	10.2	8.9	5.5
300,000	8.4	9.4	8.7	5.0
400,000	8.0	9.0	8.3	4.8
500,000	7.8	8.8	8.0	4.6
600,000	7.6	8.6	7.7	4.4
700,000	7.4	8.4	7.5	4.3
800,000	7.3	8.0	7.3	4.2
900,000	7.2	7.8	7.2	4.1
1,000,000	7.0	7.4	7.0	4.0
2,000,000	6.6	7.2	6.6	3.0
3,000,000	6.4	7.0	6.4	2.5
4,000,000	6.1	6.8	6.1	2.0

The fees for project costs falling between the figures shown shall be interpolated to the nearest one-hundredth of one percent.

*NOTE: Drainage projects have been added to Table II. USDA Table III has been moved to Table IV and a new Table III for highway, roadway and rail services has been added for CDBG projects.

Certain surveys and tasks for design purposes are included in the basic design fee and are not to be classified as additional engineering services. The Engineering Services Agreement, Form RD 1942-19, should be referenced for these surveys and tasks. Schedules of compensation set out above have been adjusted to allow for this work.

The engineer also agrees to make an inspection of the facilities prior to the end of the one year warranty period without charge. He agrees to report any deficiencies noted and to make recommendations on ways of getting them corrected to the Owner.

The maximum amount of funds that can be authorized to compensate an engineer for providing resident inspection will be in accordance with Table III above. A flat fee of 6.0% will be used for all projects where the net construction plus contingency cost is \$100,000 or less. On projects where there are multiple contracts, the percentage to be paid under each table will be determined using the net construction plus contingency cost for the sum of all contracts.

H. State of Alabama Building Commission Architectural Fee Scale

ARCHITECTURAL FEE SCALE

A. MAXIMUM BASIC FEE

The Basic Fee shall be based upon the budgeted cost of the planned work stipulated in the O/A Agreement, but shall not be higher than a fee as determined by the "Schedule of Basic Fee Rates" below. A higher Basic Fee may be paid only if approved by the Director. A Basic Fee determined by the schedule may be adjusted without the Director's approval for Major Renovation as defined in Section D of this Supplement. Lower Basic Fees may be negotiated without the Director's approval when appropriate considering project size, cost, scope, repetition, etc.

If the Basic Fee is to be a percentage rate applied to the cost of the work, the percentage rate shall not be higher than the applicable rate of the "Schedule of Basic Fee Rates" with adjustment for major renovation, if applicable. If the Basic Fee is to be a fixed, lump sum amount, that amount shall not be greater than the amount that is the product of multiplying the budgeted cost of the work by the applicable percentage rate of the "Schedule of Basic Fee Rates" with adjustment for major renovation, if applicable.

B. SCHEDULE OF BASIC FEE RATES

COST OF THE WORK	FEE IN PERCENTAGE					COST OF THE WORK	FEE IN PERCENTAGE				
	I	II	III	IV	V		I	II	III	IV	V
Up to \$100,000	8.0	9.0	10.0	11.0	12.0	8,000,001 to 10,000,000	4.1	5.1	6.1	7.1	8.1
100,001 to 200,000	7.0	8.0	9.0	10.0	11.0	10,000,001 to 12,000,000	4.0	5.0	6.0	7.0	8.0
200,001 to 300,000	6.0	7.0	8.0	9.0	10.0	12,000,001 to 14,000,000	3.9	4.9	5.9	6.9	7.9
300,001 to 400,000	5.9	6.9	7.9	8.9	9.9	14,000,001 to 16,000,000	3.8	4.8	5.8	6.8	7.8
400,001 to 500,000	5.8	6.8	7.8	8.8	9.8	16,000,001 to 18,000,000	3.7	4.7	5.7	6.7	7.7
500,001 to 600,000	5.7	6.7	7.7	8.7	9.7	18,000,001 to 20,000,000	3.6	4.6	5.6	6.6	7.6
600,001 to 700,000	5.6	6.6	7.6	8.6	9.6	20,000,001 to 22,000,000	3.5	4.5	5.5	6.5	7.5
700,001 to 800,000	5.5	6.5	7.5	8.5	9.5	22,000,001 to 24,000,000	3.4	4.4	5.4	6.4	7.4
800,001 to 900,000	5.4	6.4	7.4	8.4	9.4	24,000,001 to 27,000,000	3.3	4.3	5.3	6.3	7.3
900,001 to 1,000,000	5.3	6.3	7.3	8.3	9.3	27,000,001 to 30,000,000	3.2	4.2	5.2	6.2	7.2
1,000,001 to 1,250,000	5.2	6.2	7.2	8.2	9.2	30,000,001 to 33,000,000	3.1	4.1	5.1	6.1	7.1
1,250,001 to 1,500,000	5.1	6.1	7.1	8.1	9.1	33,000,001 to 36,000,000	3.0	4.0	5.0	6.0	7.0
1,500,001 to 1,750,000	5.0	6.0	7.0	8.0	9.0	36,000,001 to 39,000,000	2.9	3.9	4.9	5.9	6.9
1,750,001 to 2,000,000	4.9	5.9	6.9	7.9	8.9	39,000,001 to 42,000,000	2.8	3.8	4.8	5.8	6.8
2,000,001 to 2,500,000	4.8	5.8	6.8	7.8	8.8	42,000,001 to 46,000,000	2.7	3.7	4.7	5.7	6.7
2,500,001 to 3,000,000	4.7	5.7	6.7	7.7	8.7	46,000,001 to 50,000,000	2.6	3.6	4.6	5.6	6.6
3,000,001 to 3,500,000	4.6	5.6	6.6	7.6	8.6	50,000,001 to and over	2.5	3.5	4.5	5.5	6.5
3,500,001 to 4,000,000	4.5	5.5	6.5	7.5	8.5						
4,000,001 to 5,000,000	4.4	5.4	6.4	7.4	8.4						
5,000,001 to 6,000,000	4.3	5.3	6.3	7.3	8.3						
6,000,001 to 8,000,000	4.2	5.2	6.2	7.2	8.2						

BUILDING GROUPS OF THE SCHEDULE

Group I: Industrial buildings without special facilities, parking structures and repetitive garages, simple loft type structures, warehouses exclusive of automated equipment, and other similar utilitarian type buildings.

Group II: Armories, apartments, cold storage facilities, dormitories, exhibition halls, hangers, manufacturing/industrial plants, office buildings without tenant improvements, printing plants, public markets, and service garages.

Group III: College classroom facilities, convention facilities, correctional and detention facilities, extended care facilities, gymnasiums (simple, prefabricated-pre-engineered, minimum types shall be classified under Group II), hospitals, institutional dining halls, laboratories, libraries, medical schools, medical office facilities and clinics, mental institutions, office buildings with tenant improvements, parks, playground and recreational facilities, police stations, public health centers, research facilities, schools (elementary and secondary), stadiums, and welfare buildings.

Also, central utilities plants, water supply and distribution plants, sewage treatment and underground systems, electrical sub-stations and primary and secondary distribution systems, roads, bridges and major site improvements when performed as independent projects. When any or all of these types of improvements are incidental to an overall plan of architectural development they will be grouped with the basic architectural service of the overall project unless stated otherwise in the agreement.

Group IV: Aquariums, auditoriums, art galleries, college buildings with special facilities, communications buildings, special schools, theaters and similar facilities.

Group V: Residences and specialized decorative buildings unless otherwise stated in the agreement. Custom designed furnishings shall be categorized in Group V except when considered incidental to the basic architectural service for a building.

C. APPLICATION OF BASIC FEE RATE

1. The Basic Fee percentage rate determined by the project budget shall be applied to the actual cost of the work. It is not necessary to change the Basic Fee percentage rate if the amount of the subsequent construction contract (as awarded or adjusted for minor change orders) falls within a higher or lower bracket of the schedule than the project budget. If major changes in the project and budget occur during the design or construction phases of the project and warrant a change in the Basic Fee percentage rate to provide fair and reasonable compensation, the change must be agreed upon in an amendment to the agreement. "Major Changes" include, but are not limited to, changes in project size, complexity, usage, arrangement, schedule, or phasing of the construction or improvement work and may or may not result in a major, or significant, change in the cost of the work. A Major Change may warrant adjustment of the Basic Fee rate if the change is requested by the Awarding Authority and the change requires additional design, administrative, consultant, or other services not contemplated in the agreement.

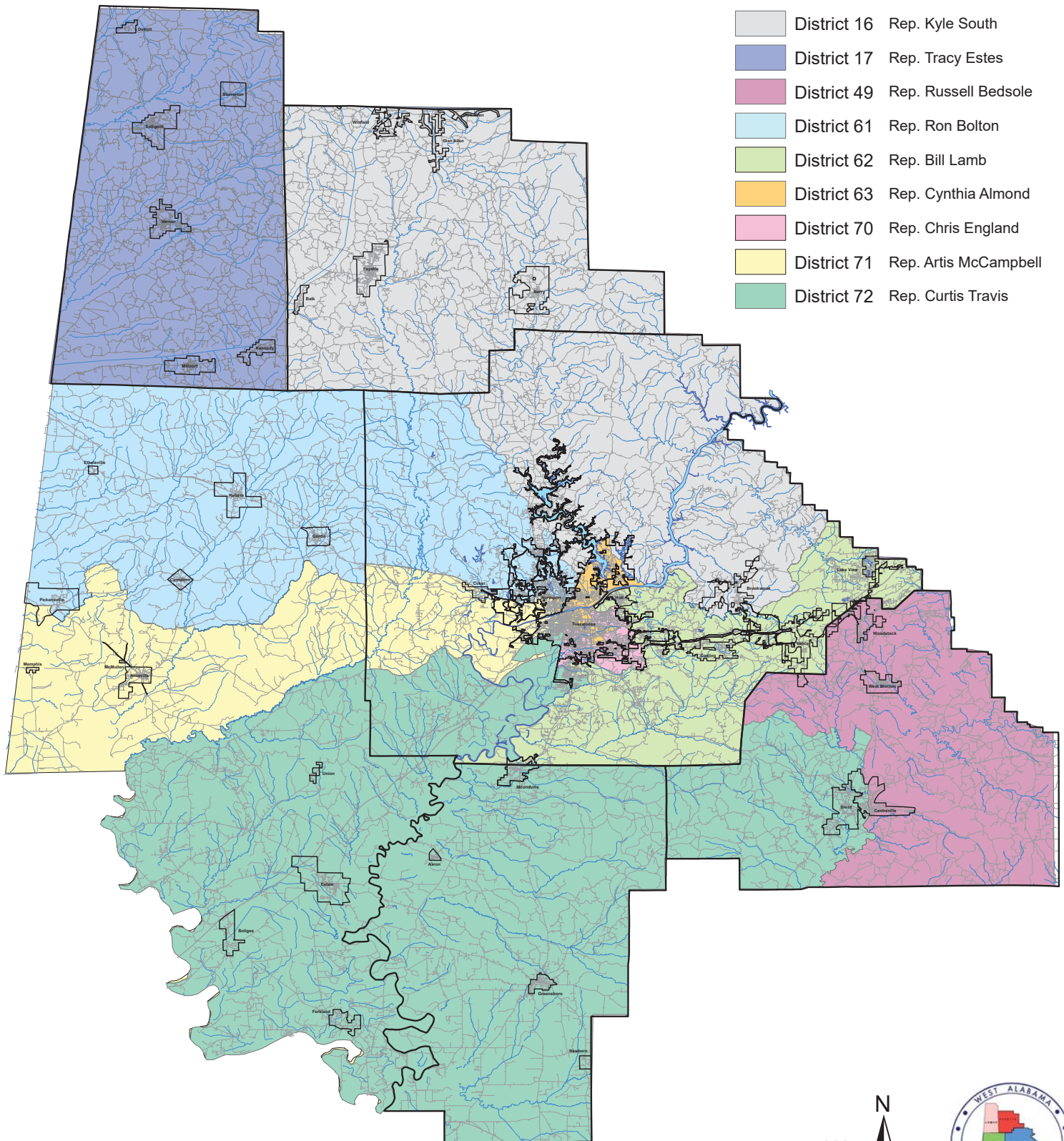
2. Unless otherwise stipulated in the agreement, the Basic Fee rate shall apply to the combined cost of all buildings or other work covered by the Agreement. If the work is executed in any manner other than under one lump sum construction contract, or one lump sum construction contract for site work and a second lump sum construction contract for building construction, the Basic Fee rate shall be subject to adjustment.
3. If the work covered by an agreement is so divided that more than one building group is involved, the Basic Fee rate of the appropriate building group may be applied to each building. Such division of Basic Fee rates must be stipulated in the agreement.
4. If the scope of an agreement involves substantial duplication of buildings on the same site, the basic fee for all services shall be applicable to the cost of the work for the first building. One-half of the basic fee for Services A, B, and C (design services) shall be applicable to the cost of the work for the second building which is a substantial duplication of the first. The basic fee for Services A, B, and C for other buildings which are substantial duplications of the first and second buildings shall be negotiated and defined in the agreement, but in no case shall exceed the fee for the first duplication. The fees for Services D and E (contract and construction administration services) shall be paid in full for duplicated buildings.
5. If the scope of an agreement involves substantial duplication of buildings on more than one site, the Basic Fee for all services shall be applicable to the cost of the work of site improvements of each site as well as modifications required to adapt the design of the substantially duplicated building to conditions of the second, third, etc., sites. The Basic Fee for all services shall be applicable to the cost of the work for the first building. One-half of the Basic Fee for design services shall be applicable to the cost of the work for the second building which is a substantial duplication of the first. The basic fee for design services for other buildings which are substantial duplications of the first and second buildings shall be negotiated and defined in the agreement, but in no case shall exceed the fee for the first duplication. The fees for contract and construction administration services shall be paid in full for duplicated buildings.

D. ADJUSTMENT FOR MAJOR RENOVATION

An increase of up to 25% in the Basic Fee Rate will be allowed for major renovation projects. This adjustment is intended to provide compensation to the design professional for the added effort required to investigate and develop drawings of existing conditions and other additional work required for renovation. A project is considered a major renovation if more than 50% of the construction cost involves renovations and alterations. The application of this adjustment is negotiable and must be stipulated in the agreement to be effective. The presence and accuracy of "as-built" drawings of the existing conditions that can be provided by the Awarding Authority to the design professional may minimize or eliminate the need for this adjustment. In general, re-roofing projects are not to be considered as major renovations.

I. State Legislature Districts

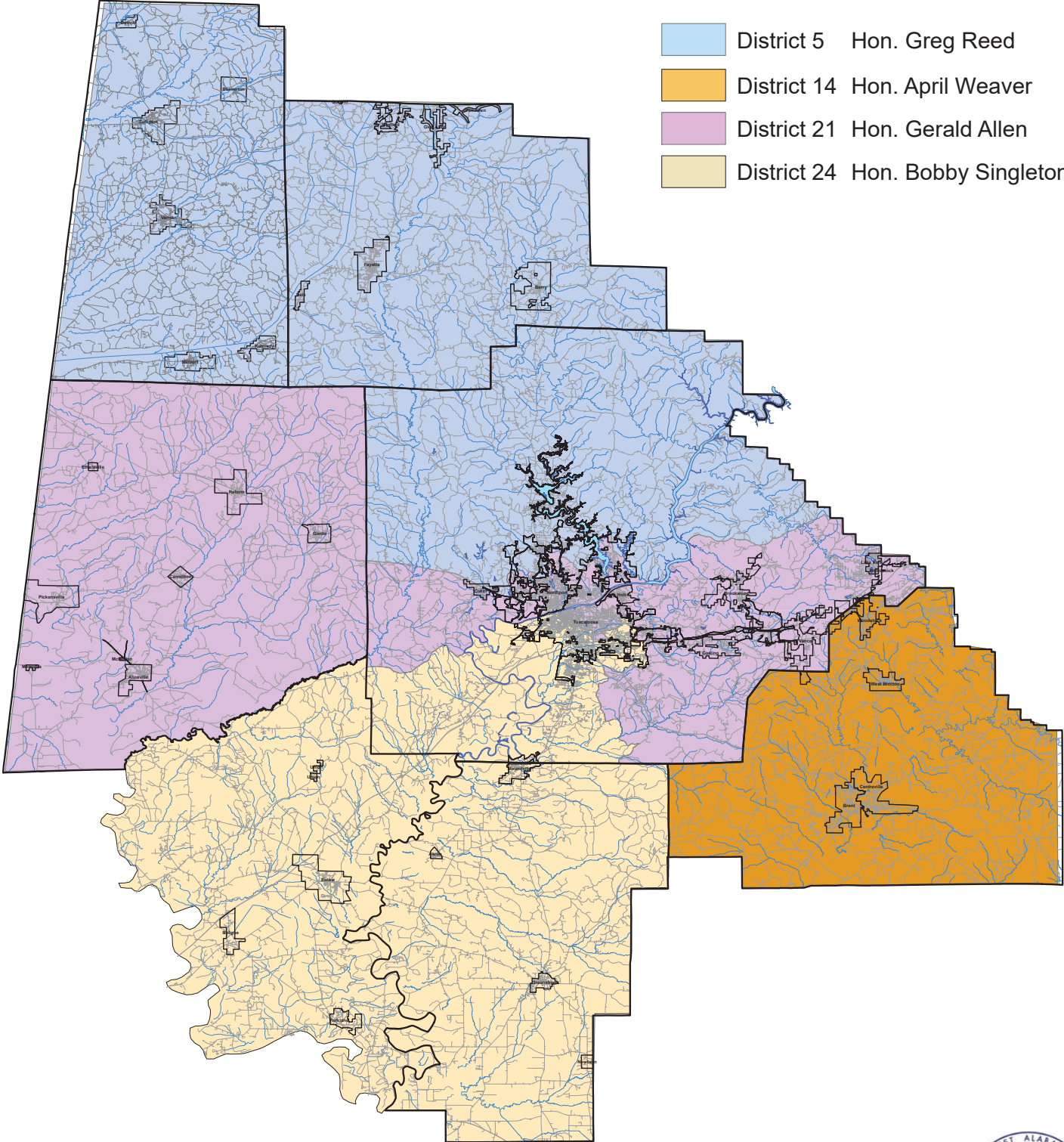
West Alabama House Districts



January 2023



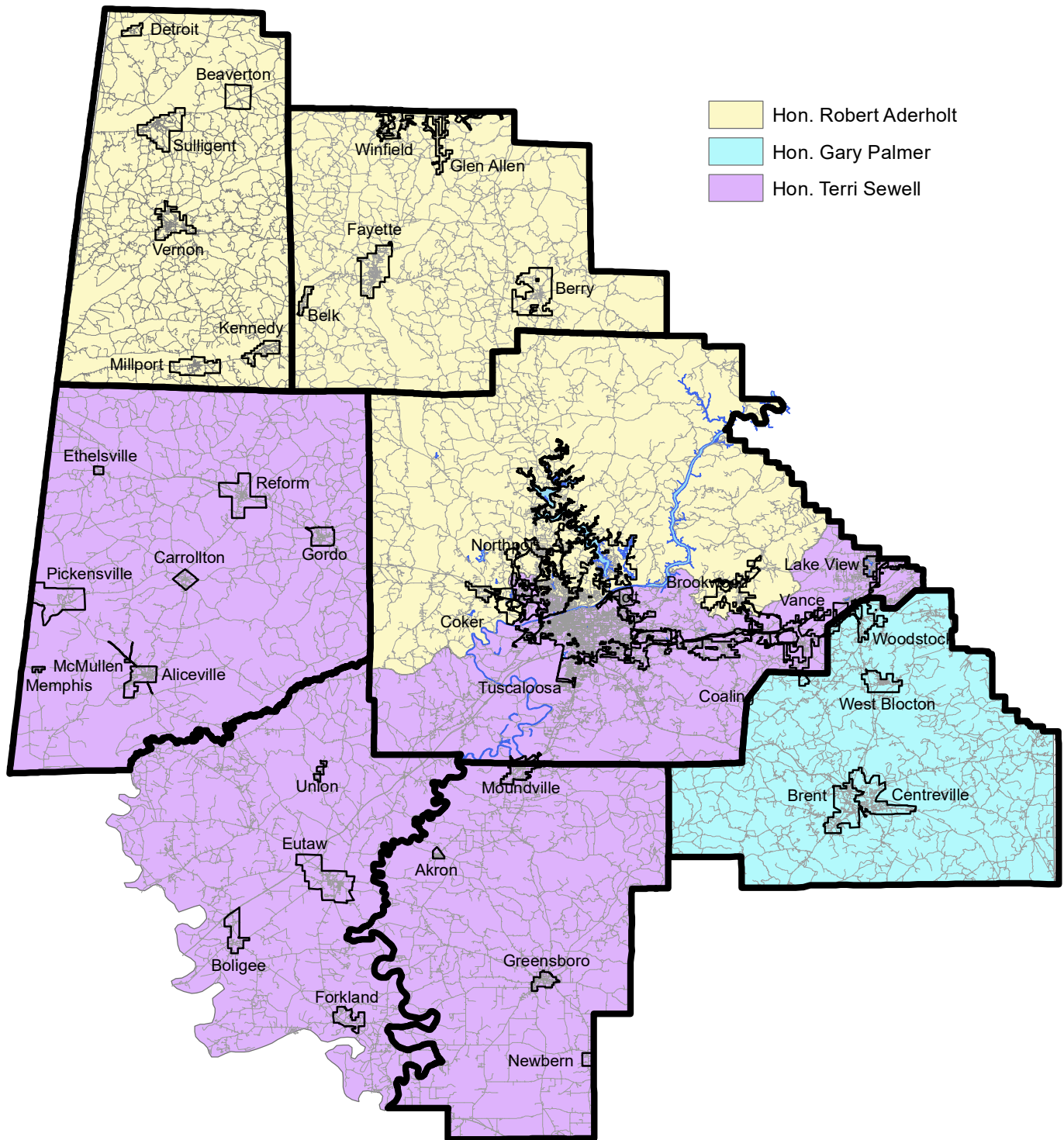
West Alabama State Senate Districts



January 2023

J. US Congressional Districts

West Alabama US Congressional Districts



This map has been produced by the West Alabama Regional Commission (205 333-2990).
 Source: US Census Bureau Census 2000, Alabama Legislative Reapportionment Office.
 This map is not a survey product and should not be used for conveyance.

January 2023